

2233 Lorraine Ave, Coquitlam

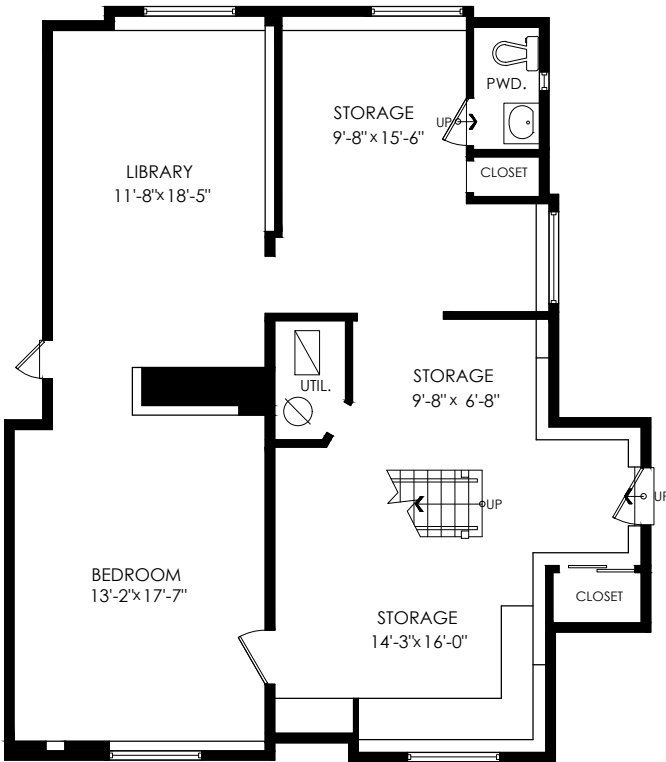
Lower Floor: 1,138 sq. ft.
Main Floor: 1,259 sq. ft.
Total Livable: 2,397 sq. ft.

Deck: 211 sq. ft.
Total Extras: 211 sq. ft.

Garage: 584 sq. ft.
Grand Total: 2,981 sq. ft.

Lower Floor Plan

Floor Area: 1138 sq.ft.
Ceiling Height: 6'-9"



Main Floor Plan

Floor Area: 1259 sq.ft.
Ceiling Height: 7'-5"

