



4903 1128 WEST GEORGIA STREET

THE JEWEL BOX AT THE SHANGRI-LA ESTATES

SID + JACQUELINE
REAL ESTATE GROUP

WWW.SIDANDJACQUELINE.COM

778-919-7921



OAKWYNREALTY



S
|
J



THE JEWEL BOX

ONE OF THE MOST EXQUISITE ESTATES IN THE SKY - THE JEWEL BOX AT THE SHANGRI-LA.

AN INCOMPARABLE MASTERPIECE, THIS 7300 SF, TWO-LEVEL LUXURY HOME WELCOMES YOU WITH WALLS OF GLASS AND 20' CEILINGS THAT SHOWCASE EXPANSIVE MOUNTAIN, WATER AND CITY VIEWS.



*

SID + JACQUELINE REAL ESTATE GROUP

HOME FEATURES AND SPECIFICATIONS

20' CEILINGS

INCREDIBLE VIEWS

EUROPEAN WHITE OAK WIDE PLANK FLOORING

FLOOR-TO-CEILING WINDOWS

WALK-IN CLOSETS & ENSUITES

LIGHT/SHADE AUTOMATION & TECHNOLOGY

TWO KITCHENS WITH TOP-OF-THE-LINE APPLIANCES

600+ BOTTLE WINE WALL

3000+ BOTTLE WINE CELLAR

HOME OFFICE AREA

2 STOREYS WITH SEPARATE ENTRANCES

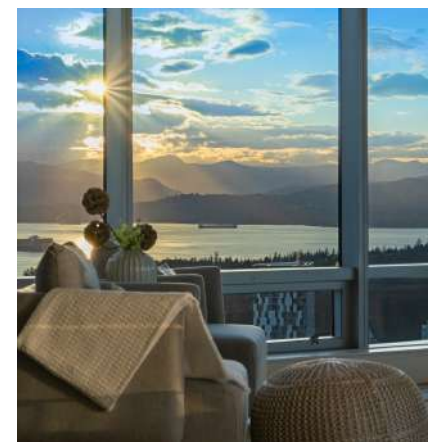
2 LAUNDRY ROOMS

FITNESS AREA

SHANGRI-LA AMENITIES



BUILDING	SHANGRI-LA ESTATES
ADDRESS	4903 1128 WEST GEORGIA STREET
BEDROOMS	4
BATHROOMS	4 FULL, 2 HALF
LIVING AREA	7,299 SQFT
OUTDOOR SPACE	2 BALCONIES
PARKING	4
STORAGE	5
BUILT	2008



FORMAL LIVING AND DINING

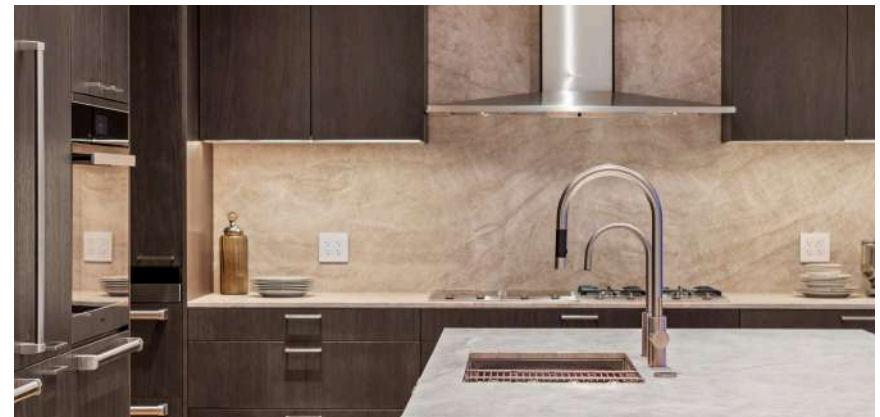


The grand scale of the formal living and dining areas makes it an entertainer's dream that features a quartzite back-lit glass wine wall with 600+ bottle capacity, European white oak wide plank flooring and floating glass staircase.



PRINCIPAL KITCHEN

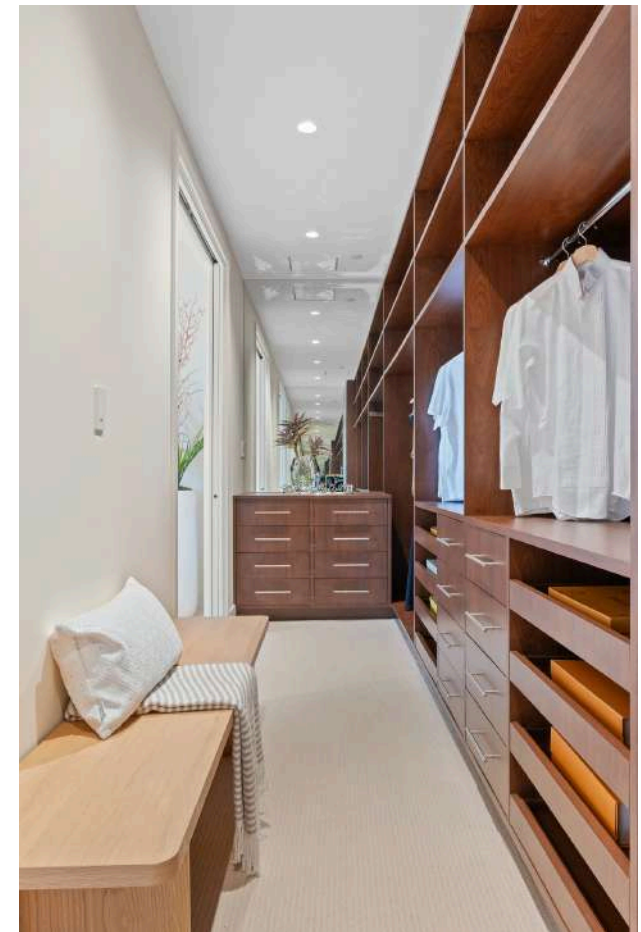
Defining quality, the chic principal kitchen features Poggenpohl cabinetry, Taj Mahal leathered quartzite stone countertops; Sub-Zero & Miele appliances (including 36" fridge with freezer drawers, 24" & 30" cooling drawers, 30" convection oven, 24" steam combination oven, vacuum sealing drawer, cooktop with induction and gas), plumbed coffee machine, two dishwashers, undercounter wine fridge, microwave drawer, water system (instant filtered hot, cold, and sparkling), as well as dining and bar areas to enhance every occasion.





PRIMARY BEDROOM

The tranquil and spacious primary bedroom suite features luxurious wool carpet, stylish walk-in closet and spa-inspired ensuite with heated floors, aromatherapy steam shower with dual shower heads and gorgeous freestanding bathtub from which to enjoy the captivating views.



The home's three other bedrooms (one of which can be enjoyed as a media room is equipped with 85" inch QLED TV & state-of-the-art Dolby Atmos theatre system) have well-appointed closets and serene ensuites with elevated design and premium fixtures.

MEDIA ROOM / BEDROOM TWO (UPPER LEVEL)





**BEDROOM THREE
(MAIN LEVEL)**



BEDROOM FOUR (WEST WING)





OFFICE + WEST WING

An airy office and seating area greets you as you enter the upper-level West Wing where you will find an impressive living and outdoor deck space with astonishing views of English Bay and beyond - the ideal place to enjoy a sunset or entertain - as well as an elegant second kitchen with Boffi cabinetry, Miele and Sub-Zero appliances, and fitness area with commercial grade gym flooring.

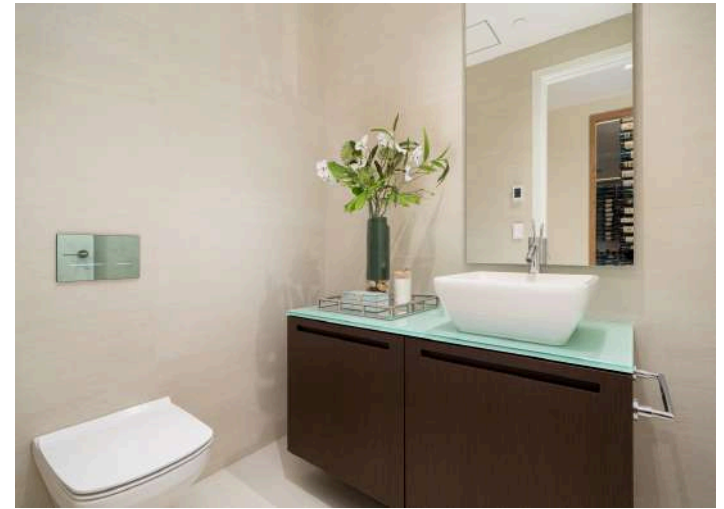




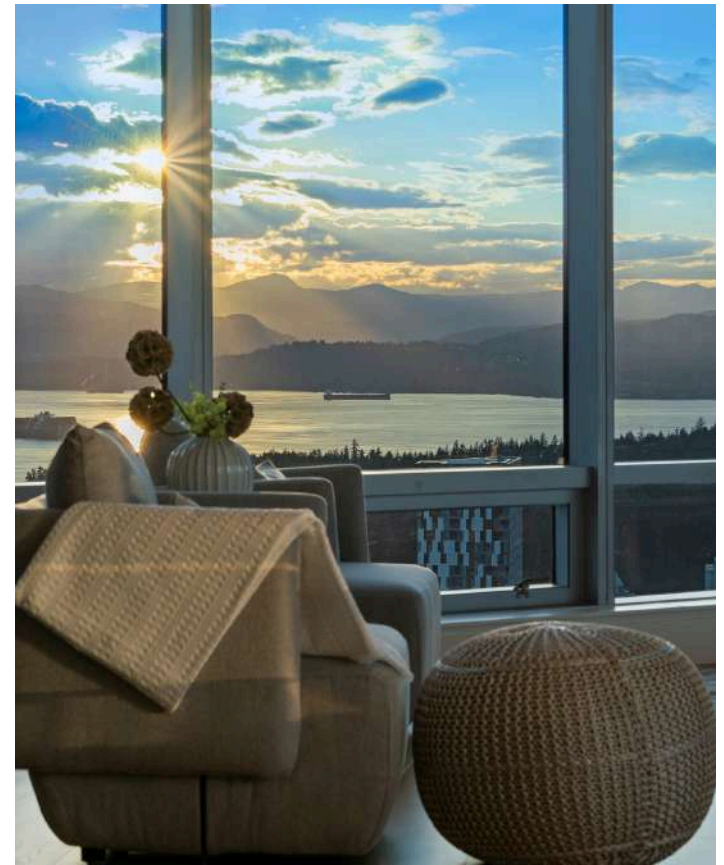


THE WINE CELLAR

For the connoisseur, the professionally designed wine cellar with 3000+ bottle capacity is a showpiece with Vintage View racking, and controlled temperature and humidity that is remotely monitored for peace of mind.



Meticulously reimagined, this luxurious home also offers two powder rooms, home automation, two laundry rooms plus steam styler, 4 parking stalls, 5 storage lockers, and access to the Shangri-la's 5-Star amenities including pool, hot tub, fitness centre, and concierge service.



LIFE AT THE SHANGRI-LA

Exceptional service, in a peaceful and serene setting.

As a resident of the Shangri-La Estates, you will have access to the benefits and world-class amenities of this 5-star hotel, which include:

CHI, THE SPA

CHI, The Spa at Shangri-La features an exclusive selection of treatments inspired by the natural beauty of the West Coast of British Columbia

HEALTH CLUB

The 24-hour Health Club features a Juice Bar, Fitness Centre, Yoga Studio, Steam Room, Sauna, Pool, Whirlpool, and more.

CONCIERGE SERVICE

The highly attentive concierge team, found in the main and lower Hotel Lobby, is available to provide residents with personalized services, while ensuring safety and security.

CARLINO RESTAURANT

"It's only fitting that this verdant sanctuary should be tucked away on a terrace of the Shangri-La Hotel, offering a sense of placid elegance ... The menu displays a typically Italian devotion to simplicity, celebrating seasonal produce from local farms." - MICHELIN Guide

A GRAND ENTRANCE

Make a statement by welcoming guests through the Hotel Lobby, adorned with high ceilings, concierge, a calming scent, and beautiful decor which includes a Fazioli Grand Piano, or enter through the underground lobby for increased discretion.

VALET & VISITOR PARKING

Residents have access to the hotel's valet service, accessible through the lower lobby. Visitor parking is also available.

DEDICATED ELEVATORS

The Estate Residences, located between levels 44 and 61, enjoy the use of dedicated elevators.



THE BEST OF VANCOUVER AWAITS

The prime location in the heart of downtown Vancouver provides a gateway to the city's finest offerings.

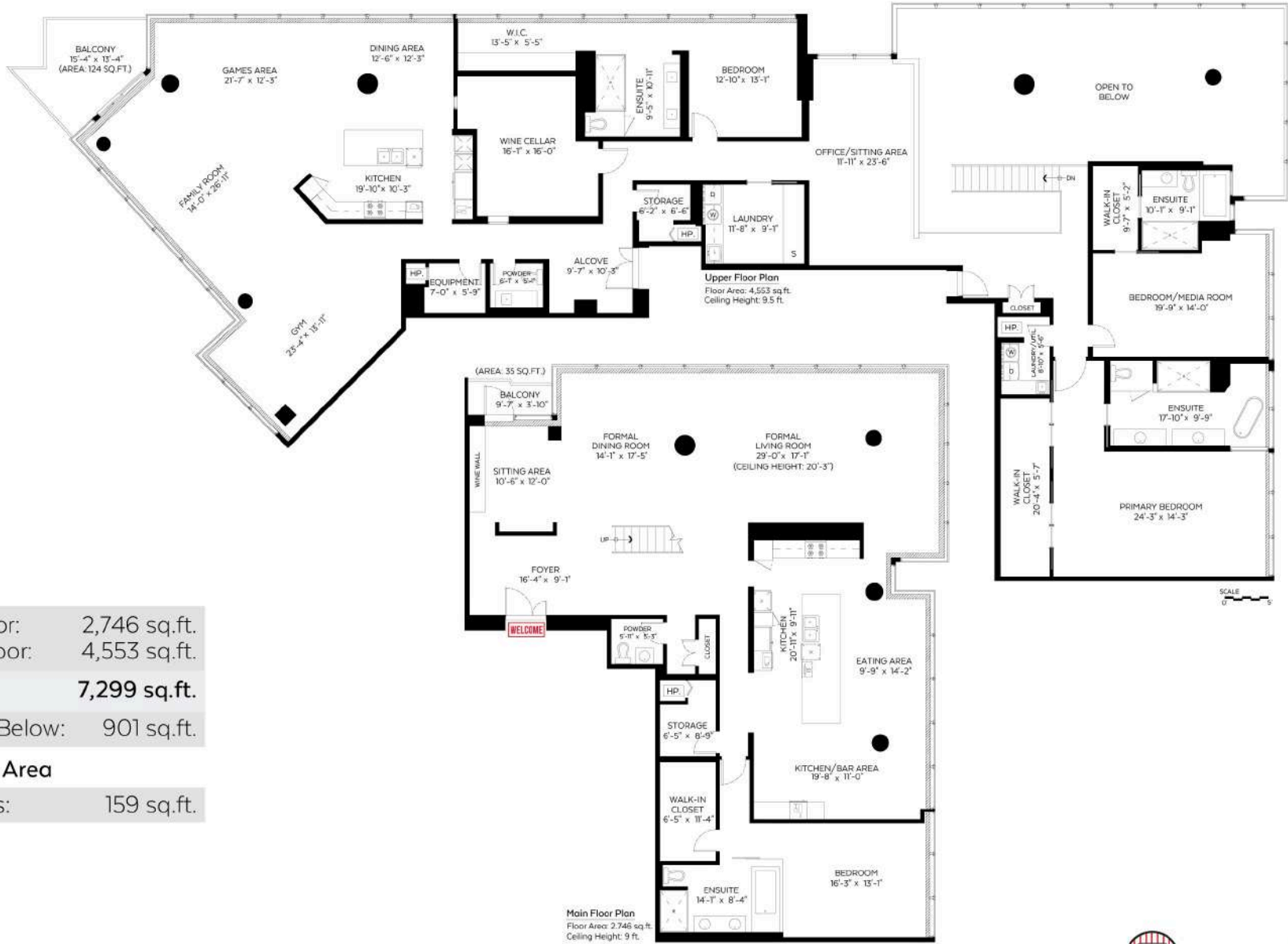
You'll be steps to world-class dining and shopping in Vancouver's Luxury Zone, and minutes to Stanley Park, English Bay and Coal Harbour - the best of Vancouver awaits you.

Enjoy a stroll to galleries or the shops on Robson Street, or bike ride along the Seawall and through Stanley Park.

You'll also enjoy the convenience of having everything you need within easy reach, in one of the most beautiful cities in the world.



*The information contained within this brochure is from sources believed to be reliable, but should not be relied upon without verification. E&OE.
 Jacqueline Adler Personal Real Estate Corporation, Sid Koshul, Kylen Fox, the Sid + Jacqueline Real Estate Group and Oakwyn Realty Ltd assume no responsibility for its accuracy.
 *Sizes are approximate and should be verified. *Not intended to cause or induce breach of existing agency agreement



Main Floor:	2,746 sq.ft.
Upper Floor:	4,553 sq.ft.
Total:	7,299 sq.ft.
Open to Below:	901 sq.ft.
Auxiliary Area	
Balconies:	159 sq.ft.

Valid Until: February 26, 2025



The floor plan is not suitable for architectural/construction and is covered under E&O. © Excelsior Measuring Inc. 2024. All rights reserved for Excelsior Measuring Inc. Users shall not publish and distribute such material (in whole or in part) and/or incorporate it in other works in any form.



SID + JACQUELINE REAL ESTATE GROUP



Certified Luxury Home Marketing Specialist

Medallion Club Members

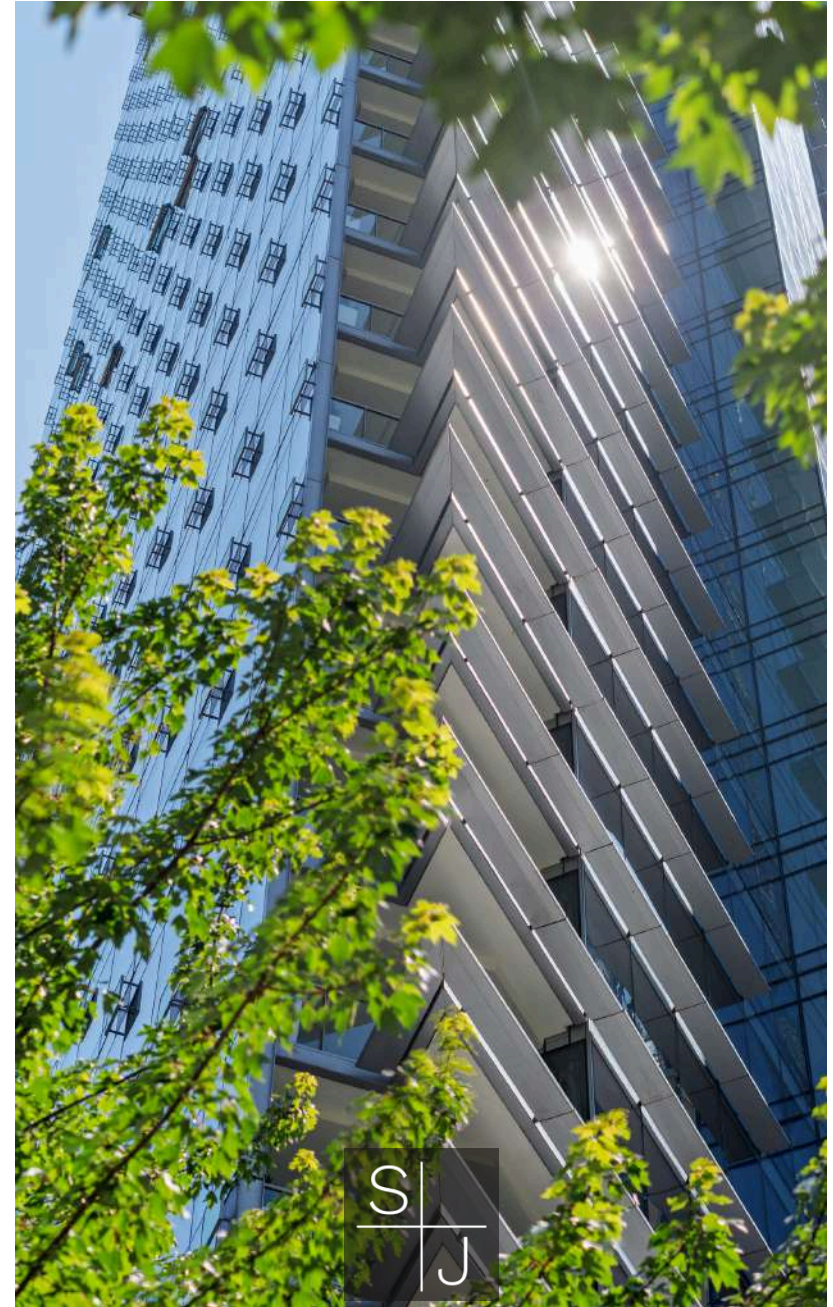
Top 10% of Realtors® in Greater Vancouver

Top 10 Teams at Oakwyn Realty

Top 100 British Columbia Real Estate Agents
on Social Media (Property Spark)

778-919-7921

WWW.SIDANDJACQUELINE.COM





WWW.SIDANDJACQUELINE.COM

SID + JACQUELINE REAL ESTATE GROUP

OAKWYN REALTY LTD.