

1576 Lodgepole Place

Coquitlam, BC V3E 2V9

5 Bed 4 Bath

GROSS INTERNAL AREA

LOWER LEVEL: 1,306 sq.ft

MAIN FLOOR: 1,533 sq.ft

UPPER LEVEL: 1,364 sq.ft

TOTAL: 4,203 sq.ft

UNFINISHED: 232 sq.ft

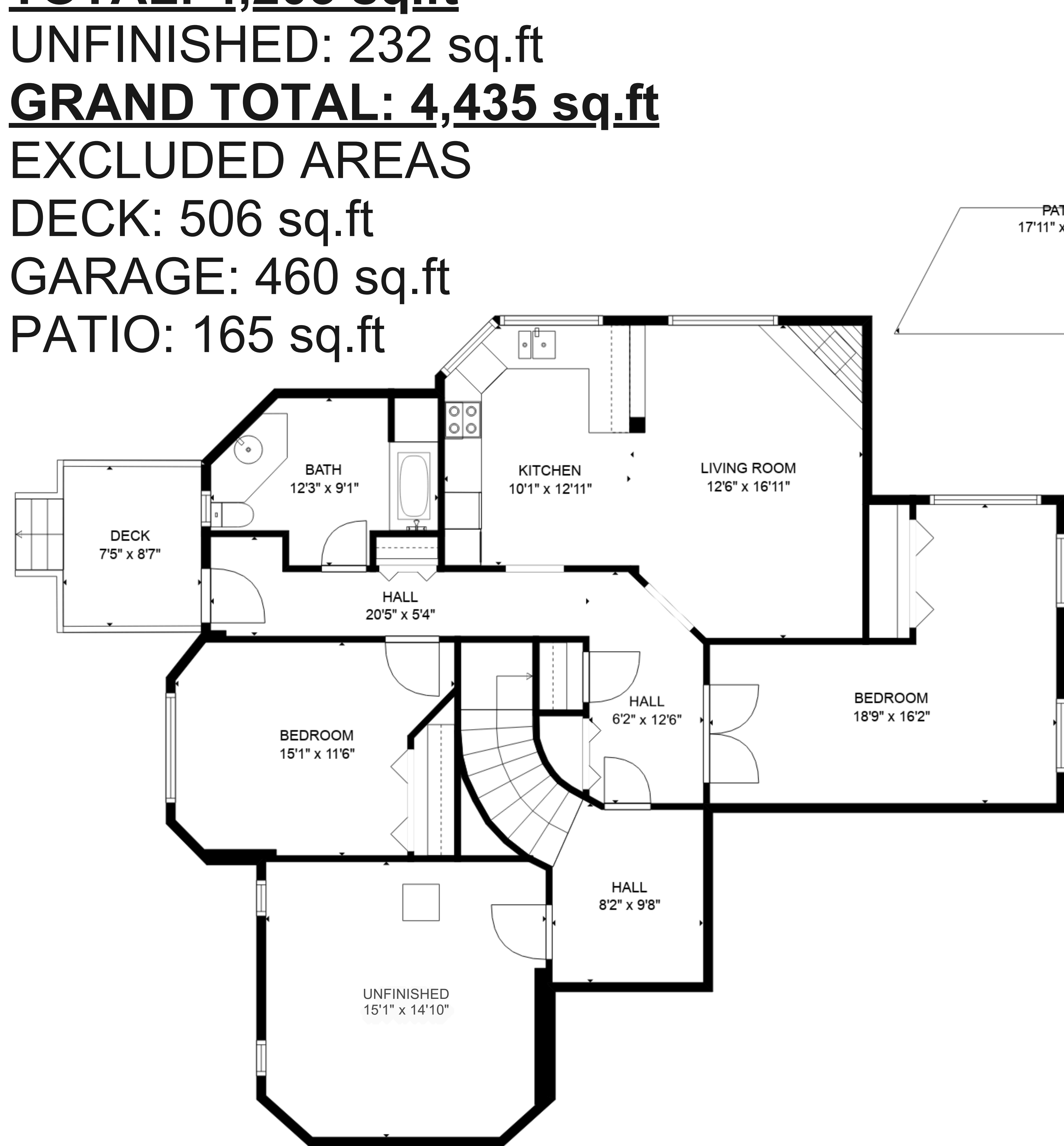
GRAND TOTAL: 4,435 sq.ft

EXCLUDED AREAS

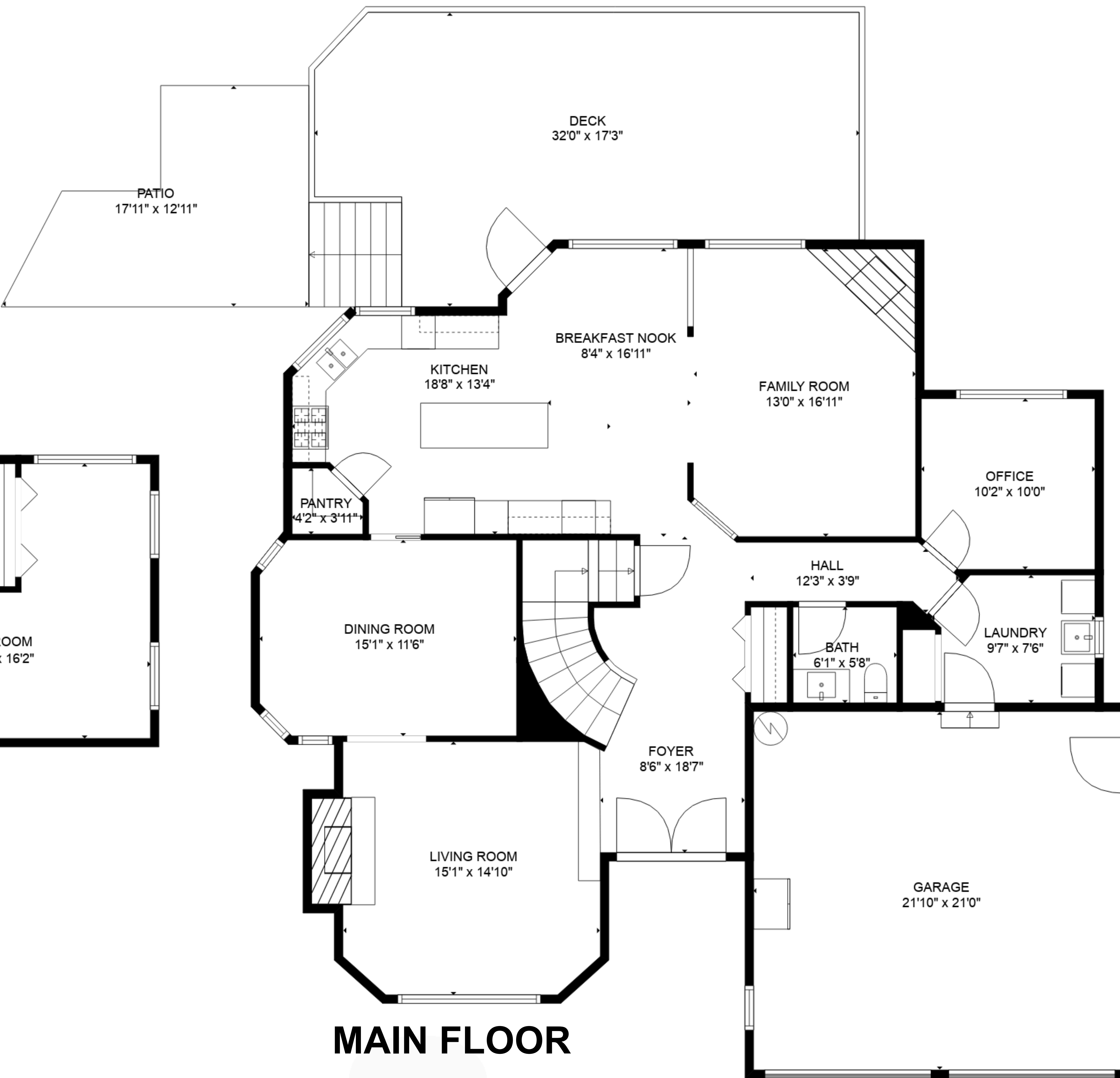
DECK: 506 sq.ft

GARAGE: 460 sq.ft

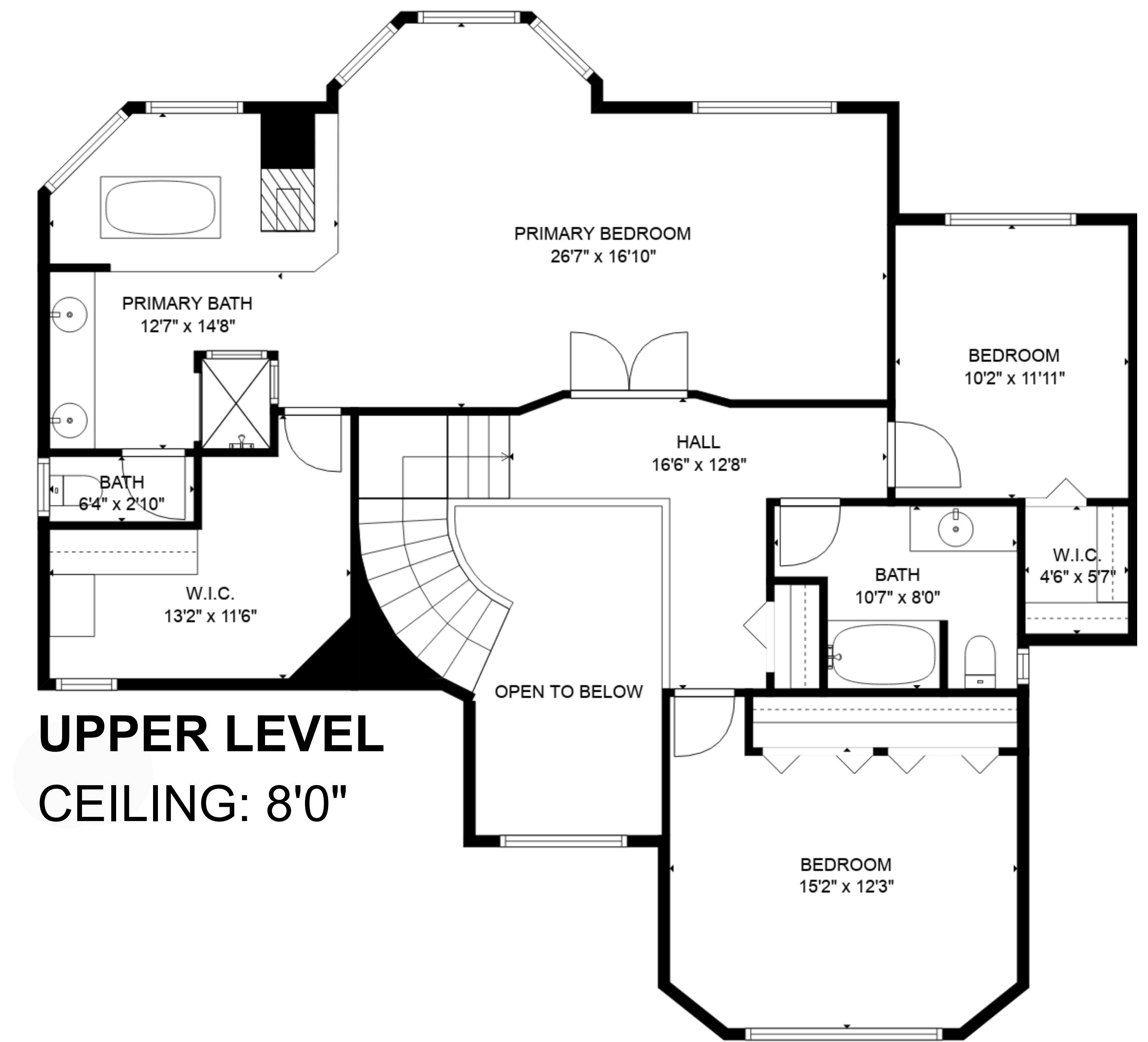
PATIO: 165 sq.ft



LOWER LEVEL
CEILING: 8'0"

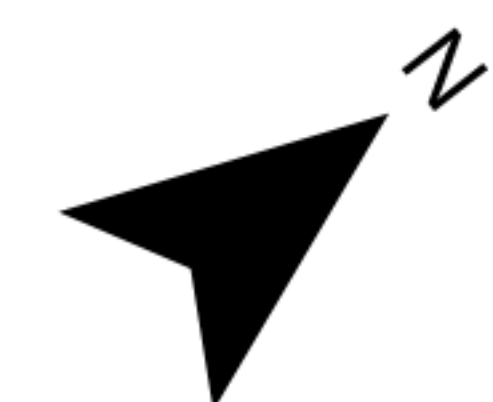


MAIN FLOOR
CEILING: 8'0"



UPPER LEVEL
CEILING: 8'0"

Disclaimer: The floorplan provides a representation of the functionality using approximate measurement and is not meant to be a precise reflection of the property, its size and detail is to be used as advertising and demonstration only and may not be to scale. This is not meant to be for construction or architectural purposes. E&O INSURED.



BE CLEAR
MEDIA