

12657 98 Avenue, Surrey

Lower Floor: 1,000 sq. ft. Deck: 328 sq. ft.
Main Floor: 1,000 sq. ft. Carport: 425 sq. ft.
Total Livable: 2,000 sq. ft. Total Extras: 753 sq. ft.

Axford real estate

778-355-0116

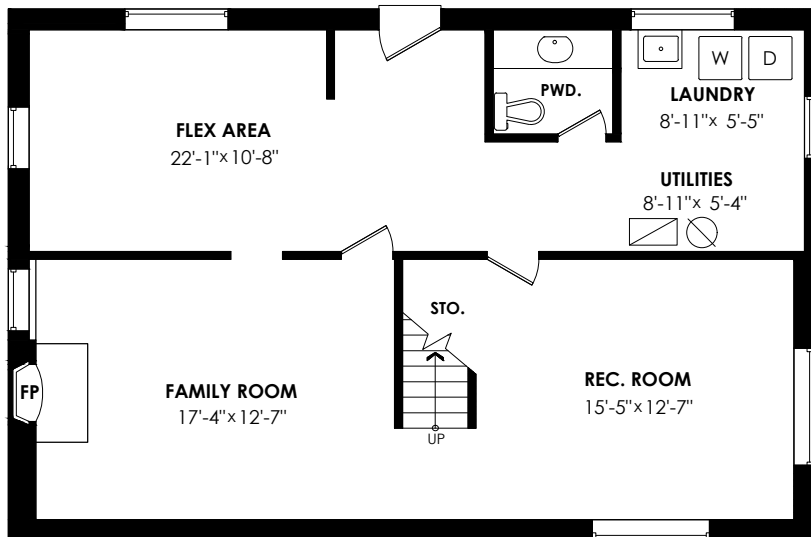
info@axfordrealestate.ca

www.axfordrealestate.ca

Axford Real Estate

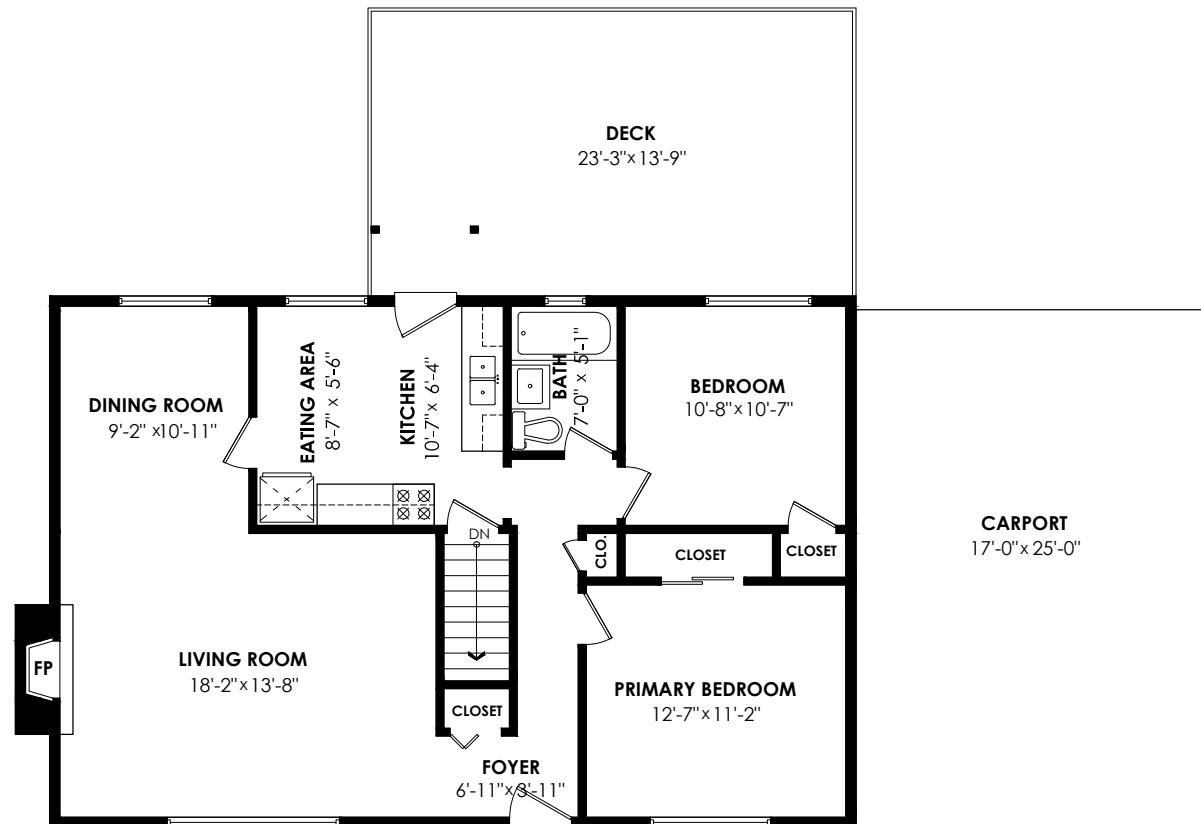
Lower Floor Plan

Floor Area: 1000 sq.ft.
Ceiling Height: 6'-11"



Main Floor Plan

Floor Area: 1000 sq.ft.
Ceiling Height: 8'



cotala

E&O Insured. For advertising purposes only. Not intended for architectural or construction use. Floorplan and measurements are approximate within +/- 2% tolerance.

