

778-355-0116

info@axfordrealestate.ca

www.axfordrealestate.ca

Axford Real Estate

# 3320 Abbey Lane, Coquitlam

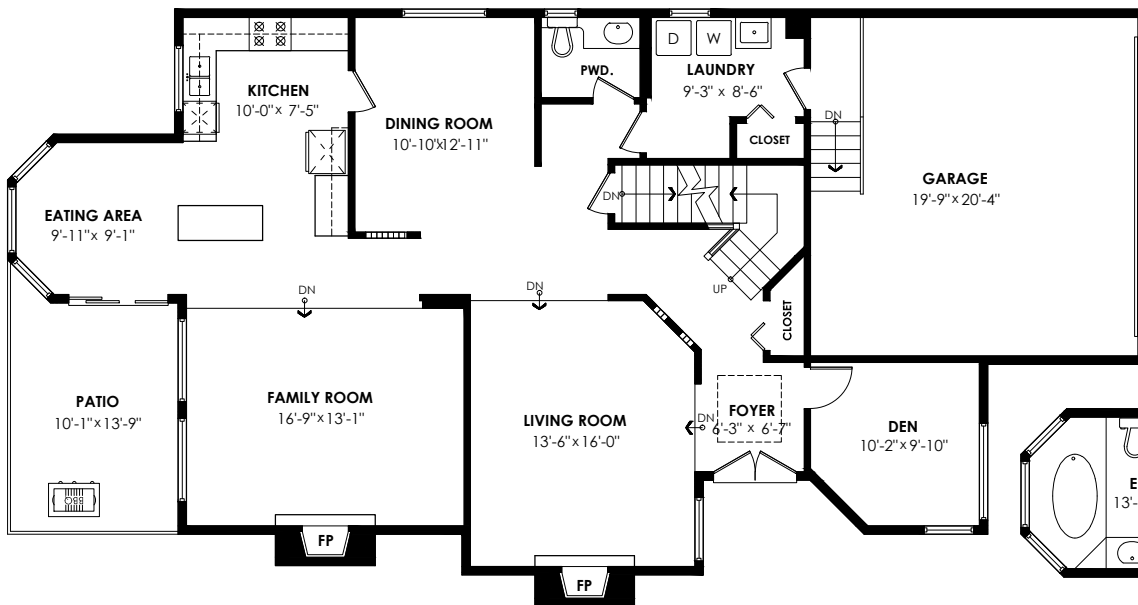
Lower Floor: 1,426 sq. ft.  
Main Floor: 1,423 sq. ft.  
Upper Floor: 1,307 sq. ft.  
**Total Livable: 4,156 sq. ft.**

Garage: 427 sq. ft.  
**Grand Total: 4,583 sq. ft.**

Patio: 146 sq. ft.  
**Total Extras: 146 sq. ft.**

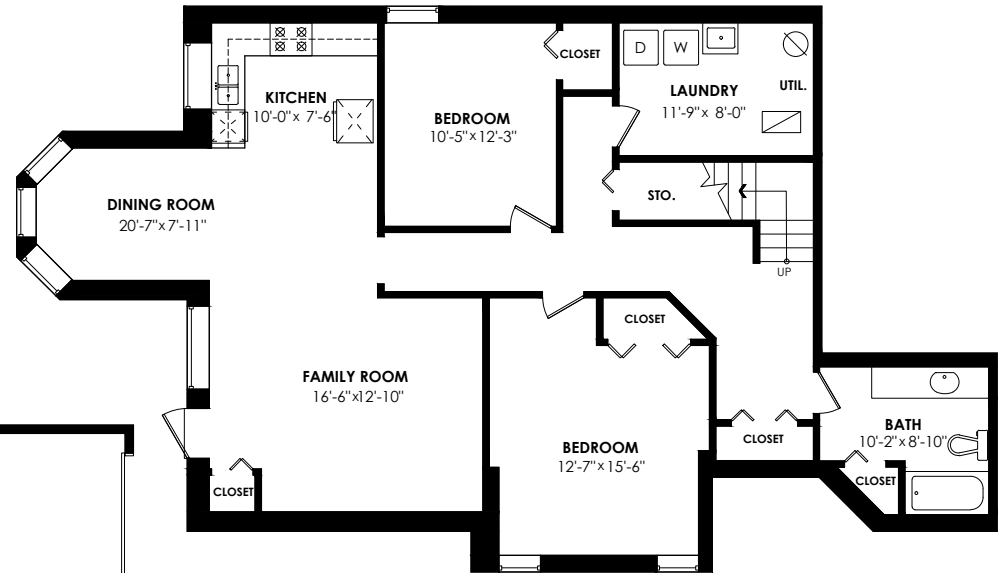
## Main Floor Plan

Floor Area: 1423 sq.ft.  
Ceiling Height: 8'-2"



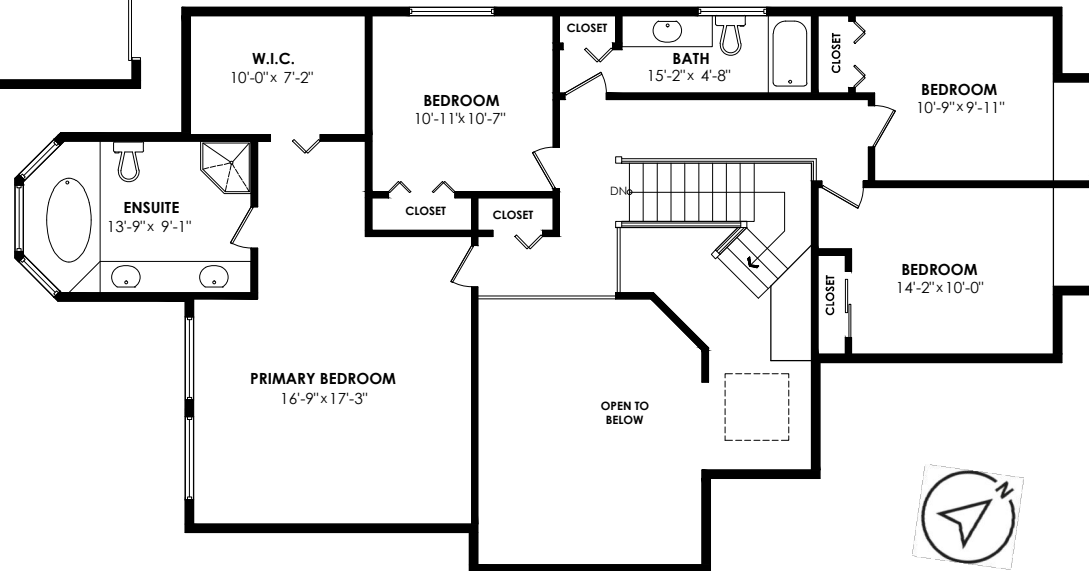
## Lower Floor Plan

Floor Area: 1426 sq.ft.  
Ceiling Height: 7'-11"



## Upper Floor Plan

Floor Area: 1307 sq.ft.  
Ceiling Height: 8'



SCALE  
0' 5'

