

7-19572 Fraser Way, Pitt Meadows

Axford real estate

778-355-0116

info@axfordrealestate.ca

www.axfordrealestate.ca

Axford Real Estate

Lower Floor: 196 sq. ft.

Main Floor: 602 sq. ft.

Upper Floor: 614 sq. ft.

Total Livable: 1,412 sq. ft.

Balcony: 128 sq. ft.

Garage: 395 sq. ft.

Total Extras: 523 sq. ft.

Main Floor Plan

Floor Area: 602 sq.ft.

Ceiling Height: 9'

Upper Floor Plan

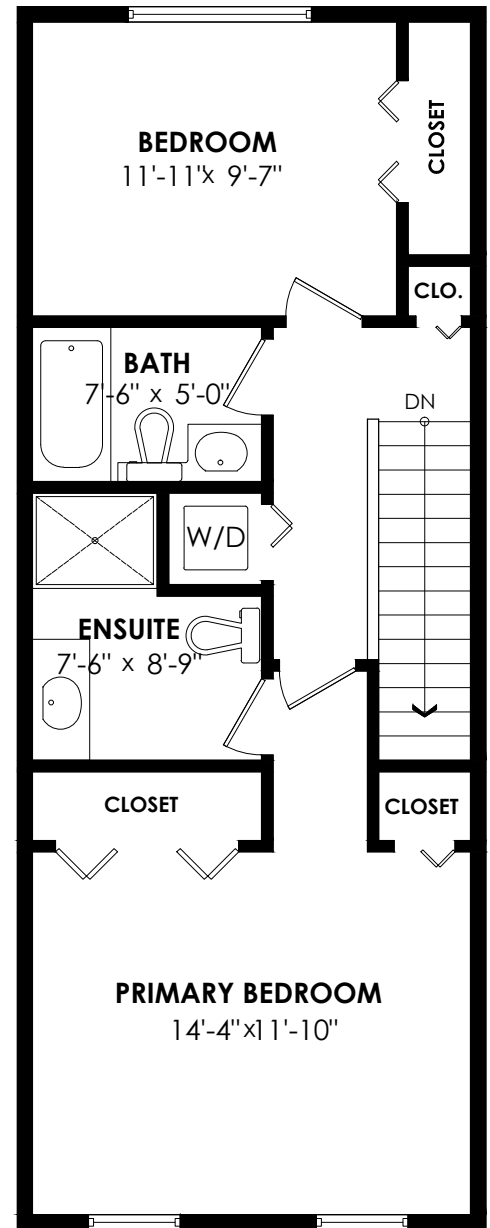
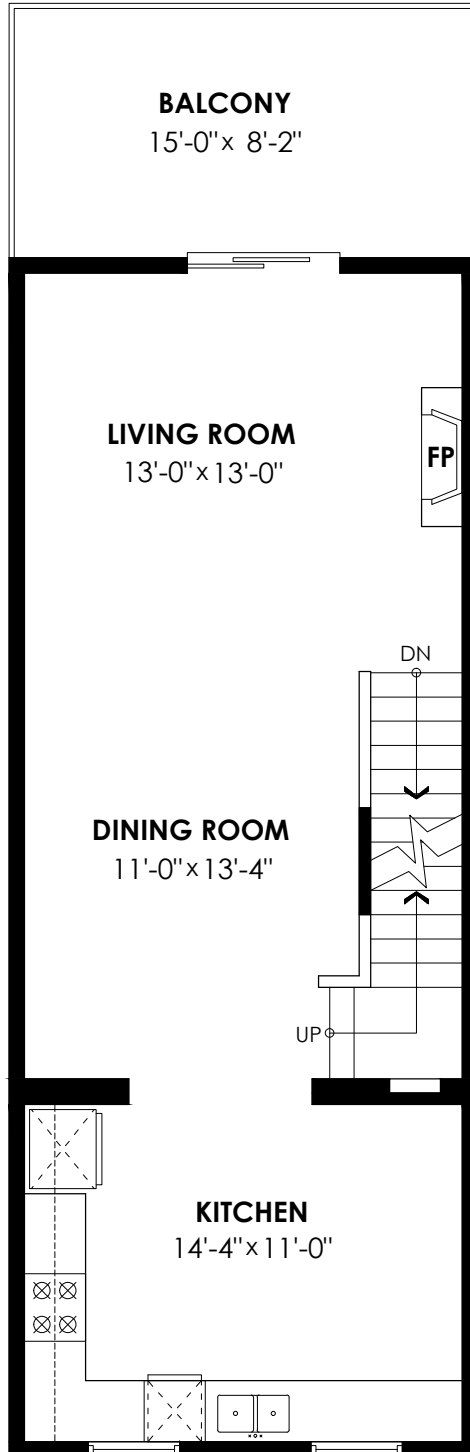
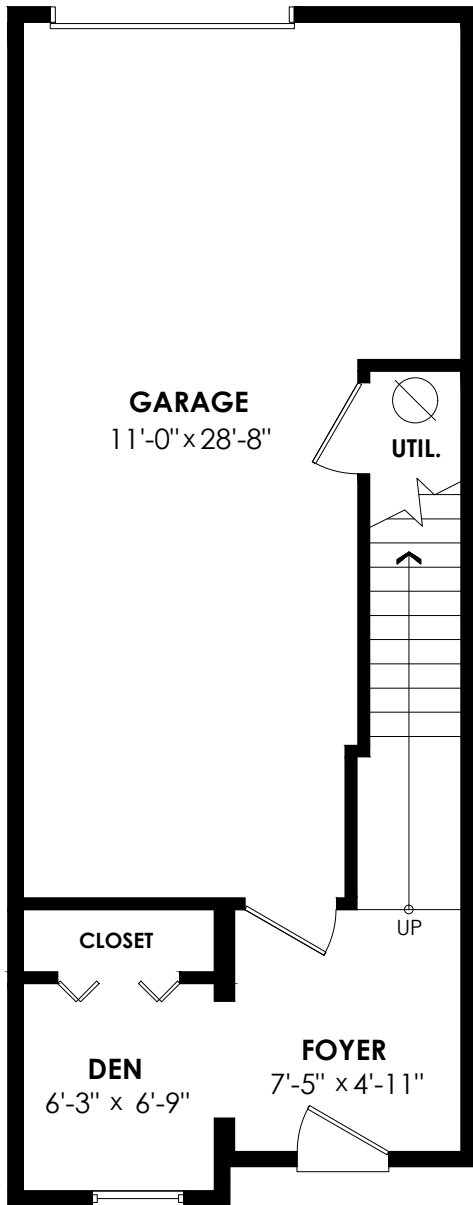
Floor Area: 614 sq.ft.

Ceiling Height: 8'

Lower Floor Plan

Floor Area: 196 sq.ft.

Ceiling Height: 8'-1"



SCALE



cotala

E&O Insured. For advertising purposes only. Not intended for architectural or construction use. Floorplan and measurements are approximate within +/- 2% tolerance.