

117-1125 Kensal Place, Coquitlam

Axford real estate

778-355-0116

info@axfordrealestate.ca

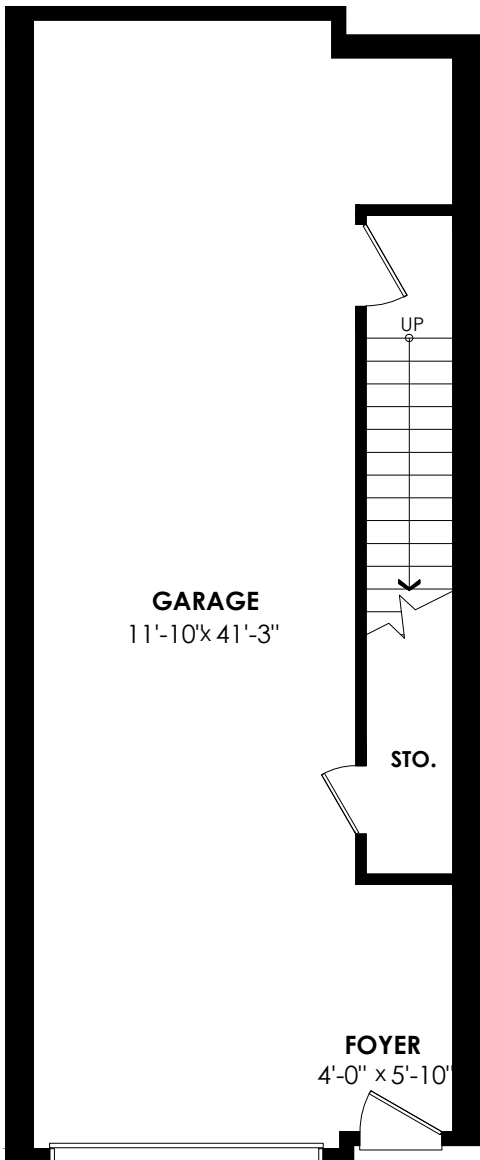
www.axfordrealestate.ca

Axford Real Estate

Main Floor: 60sq. ft. Patio: 87 sq. ft.
 Main Floor: 675 sq. ft. **Total Extras: 87 sq. ft.**
 Upper Floor: 677 sq. ft.
Total Livable: 1,412 sq. ft.
 Garage: 623sq. ft.
Grand Total: 2,035 sq. ft.

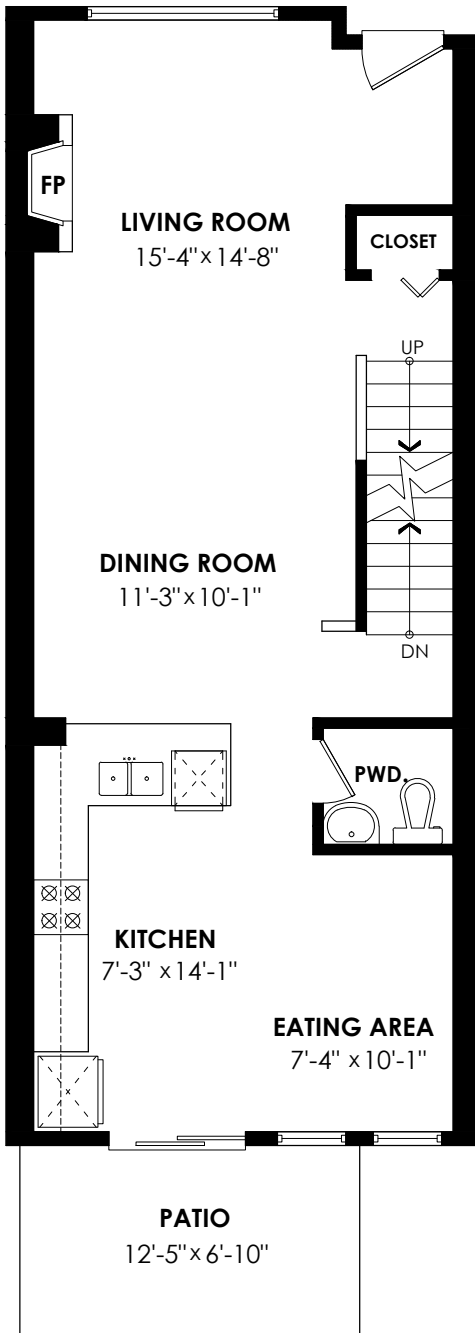
Lower Floor Plan

Floor Area: 60 sq.ft.
 Ceiling Height: 9'-3"



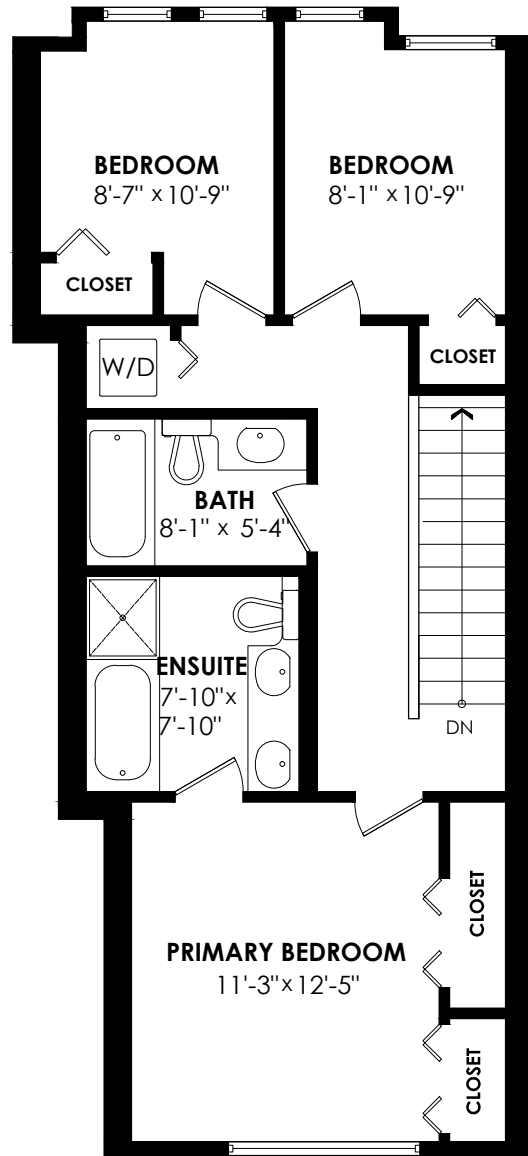
Main Floor Plan

Floor Area: 675 sq.ft.
 Ceiling Height: 9'



Upper Floor Plan

Floor Area: 677 sq.ft.
 Ceiling Height: 8'



cotala

E&O Insured. For advertising purposes only. Not intended for architectural or construction use. Floorplan and measurements are approximate within +/- 2% tolerance.