

3632 Wellington Street, Port Coquitlam

Axford real estate

778-355-0116

info@axfordrealestate.ca

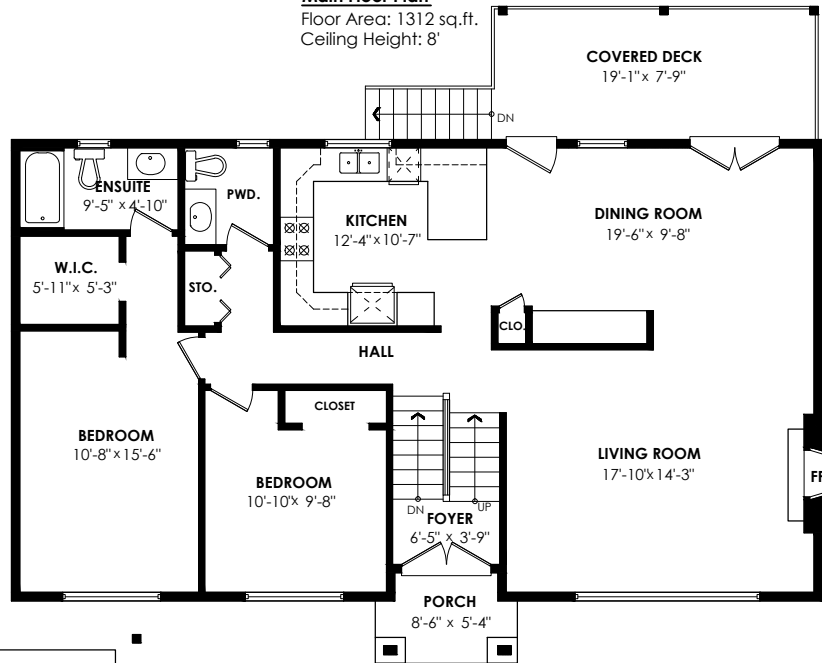
www.axfordrealestate.ca

Axford Real Estate

Lower Floor: 1,241 sq. ft. Porch: 65 sq. ft.
Main Floor: 1,312 sq. ft. Patio: 300 sq. ft.
Upper Floor: 1,070 sq. ft. Deck: 154 sq. ft.
Total Livable: 3,623 sq. ft. Total Extras: 519 sq. ft.

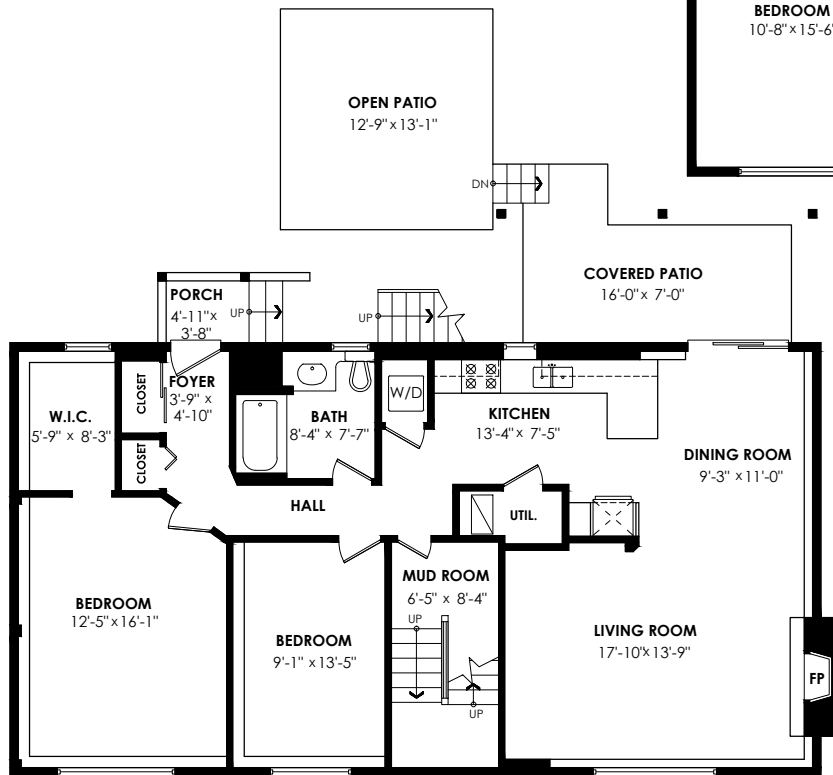
Main Floor Plan

Floor Area: 1312 sq.ft.
Ceiling Height: 8'



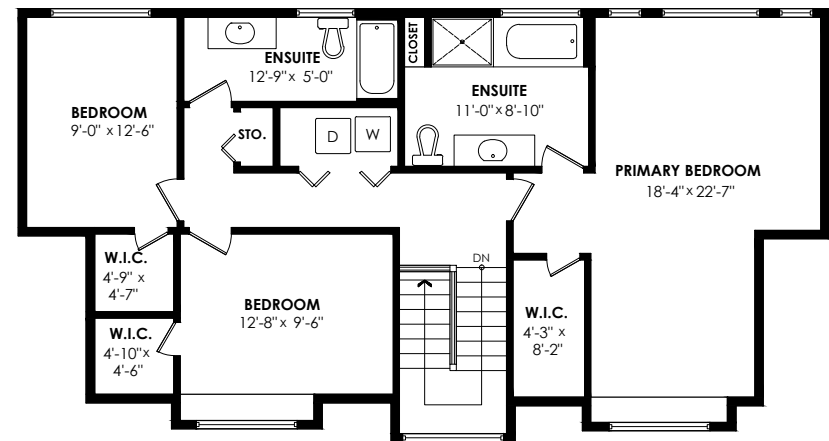
Lower Floor Plan

Floor Area: 1241 sq.ft.
Ceiling Height: 7'-8"



Upper Floor Plan

Floor Area: 1070 sq.ft.
Ceiling Height: 8'



cotala

E&O Insured. For advertising purposes only. Not intended for architectural or construction use. Floorplan and measurements are approximate within +/- 2% tolerance.

