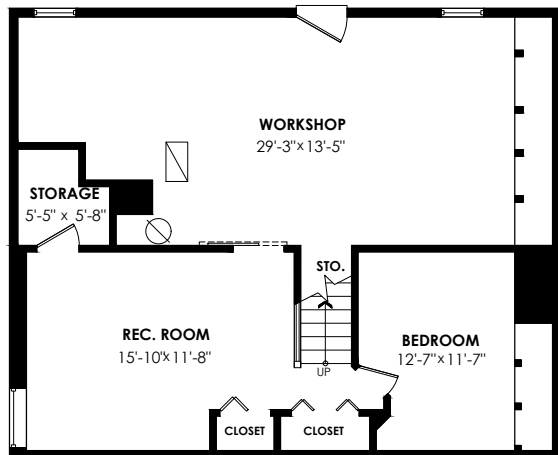


# 704 Townley Street, Coquitlam

Lower Floor: 863 sq. ft.    Porch: 171 sq. ft.  
Main Floor: 1,214 sq. ft.    Patio: 280 sq. ft.  
Upper Floor: 542 sq. ft.    Carport: 350 sq. ft.  
**Total Livable: 2,619 sq. ft.    Total Extras: 801 sq. ft.**

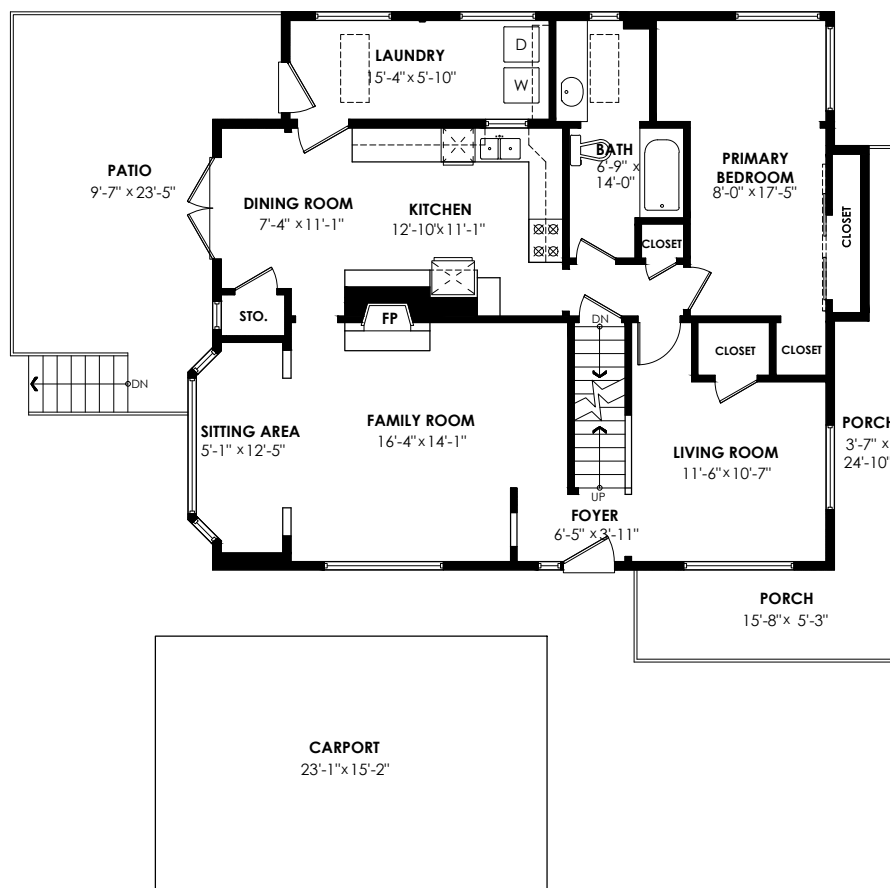
## Lower Floor Plan

Floor Area: 863 sq. ft.  
Ceiling Height: 6'-10"



## Main Floor Plan

Floor Area: 1214 sq. ft.  
Ceiling Height: 8'-2"



## Upper Floor Plan

Floor Area: 542 sq. ft.  
Ceiling Height: 7'-10"

