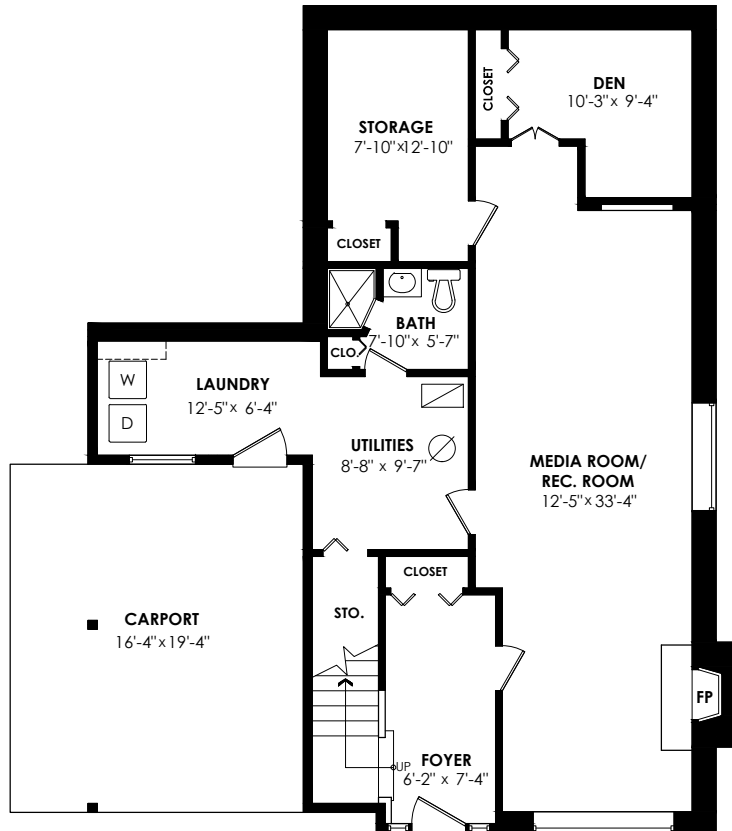


2505 Penshurst Court, Coquitlam

Lower Floor: 1,141 sq. ft. Carport: 315 sq. ft.
 Main Floor: 1,373 sq. ft. Patio: 317 sq. ft.
Total Livable: 2,514 sq. ft. Balcony: 410 sq. ft.
Total Extras: 1,042 sq. ft.

Lower Floor Plan

Floor Area: 1141 sq.ft.
 Ceiling Height: 7'-11"



Main Floor Plan

Floor Area: 1373 sq.ft.
 Ceiling Height: 8'

