

314-301 Maude Road, Port Moody

Main Floor: 880 sq. ft.

Balcony: 136 sq. ft.

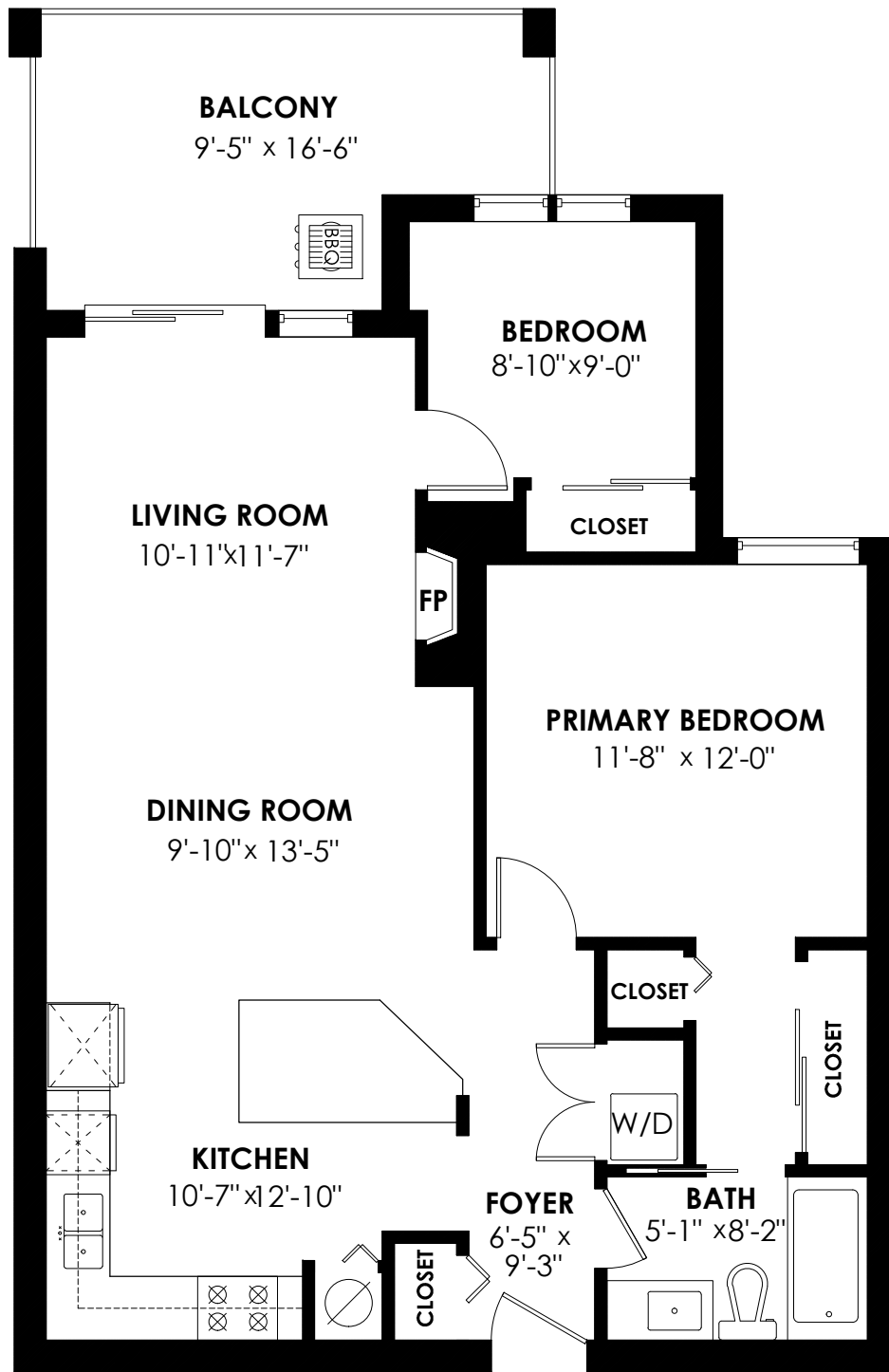
Total Livable: 880 sq. ft.

Total Extras: 136 sq. ft.

Main Floor Plan

Floor Area: 880 sq.ft.

Ceiling Height: 8'-8"



SCALE
0' 5'

