

27-1221 Rocklin Street, Coquitlam

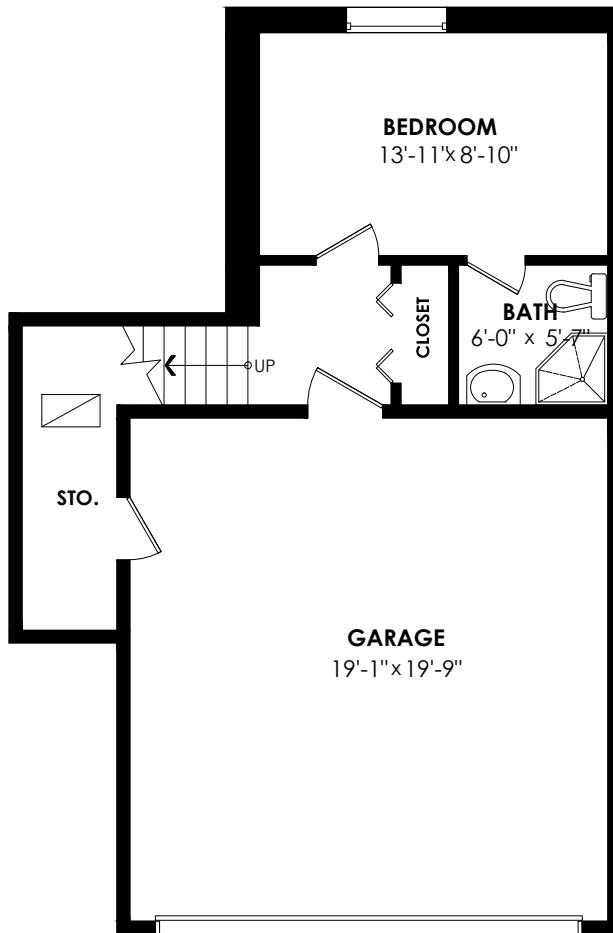
Lower Floor: 270 sq. ft. Patio: 111 sq. ft.
Main Floor: 743 sq. ft. **Total Extras: 111 sq. ft.**
Upper Floor: 759 sq. ft.
Total Livable: 1,772 sq. ft.

Garage: 472 sq. ft.

Grand Total: 2,244 sq. ft.

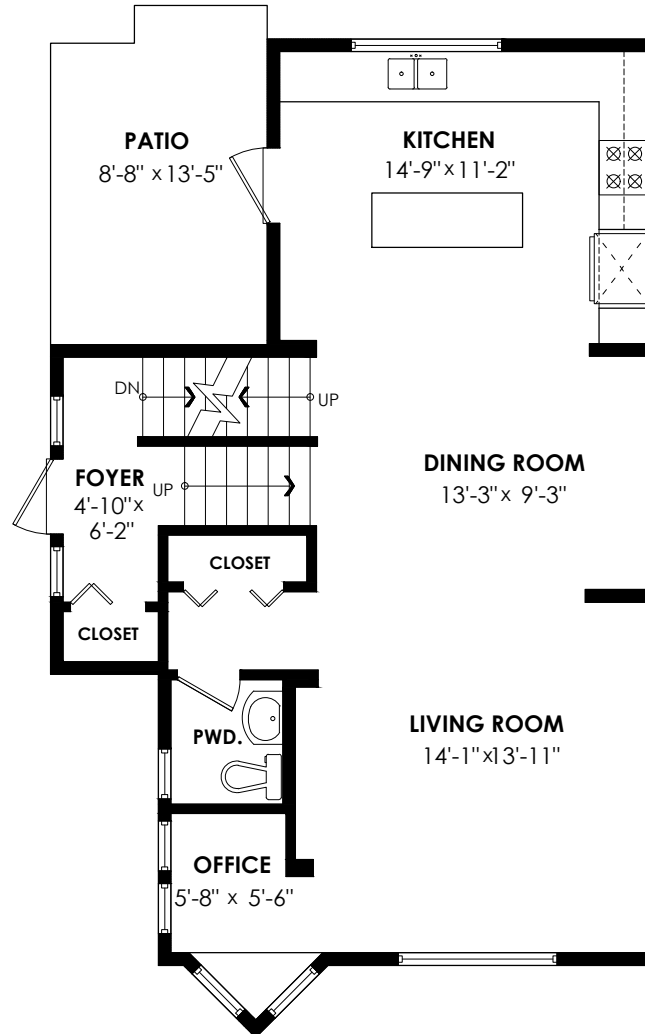
Lower Floor Plan

Floor Area: 270 sq.ft.
Ceiling Height: 7'-11"



Main Floor Plan

Floor Area: 743 sq.ft.
Ceiling Height: 10'-1"



Upper Floor Plan

Floor Area: 759 sq.ft.
Ceiling Height: 8'

