

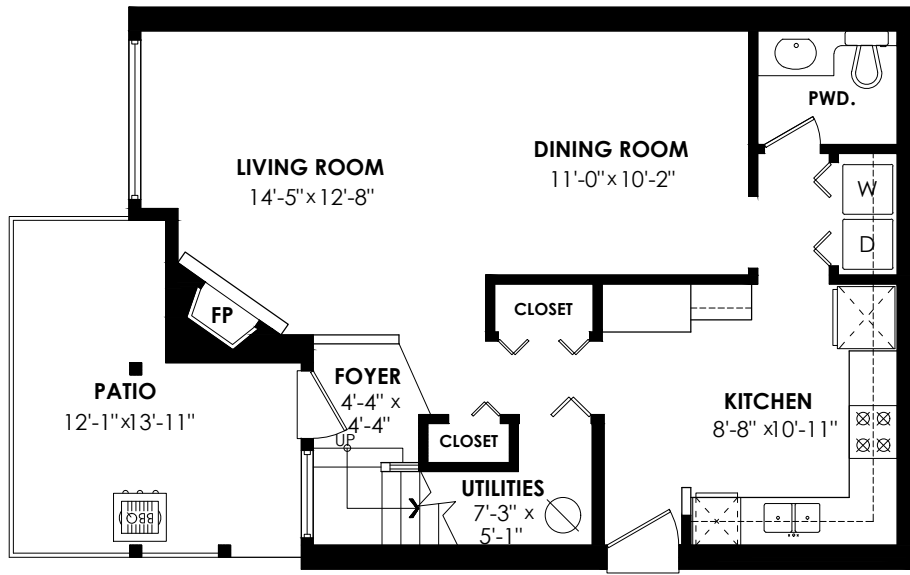
29-65 Foxwood Drive, Port Moody

Main Floor: 666 sq. ft.
 Upper Floor: 705 sq. ft.
 Total Livable: 1,371 sq. ft.

Patio: 139 sq. ft.
 Balcony: 287 sq. ft.
 Total Extras: 426 sq. ft.

Main Floor Plan

Floor Area: 666 sq.ft.
 Ceiling Height: 8'



Upper Floor Plan

Floor Area: 705 sq.ft.
 Ceiling Height: 8'

