

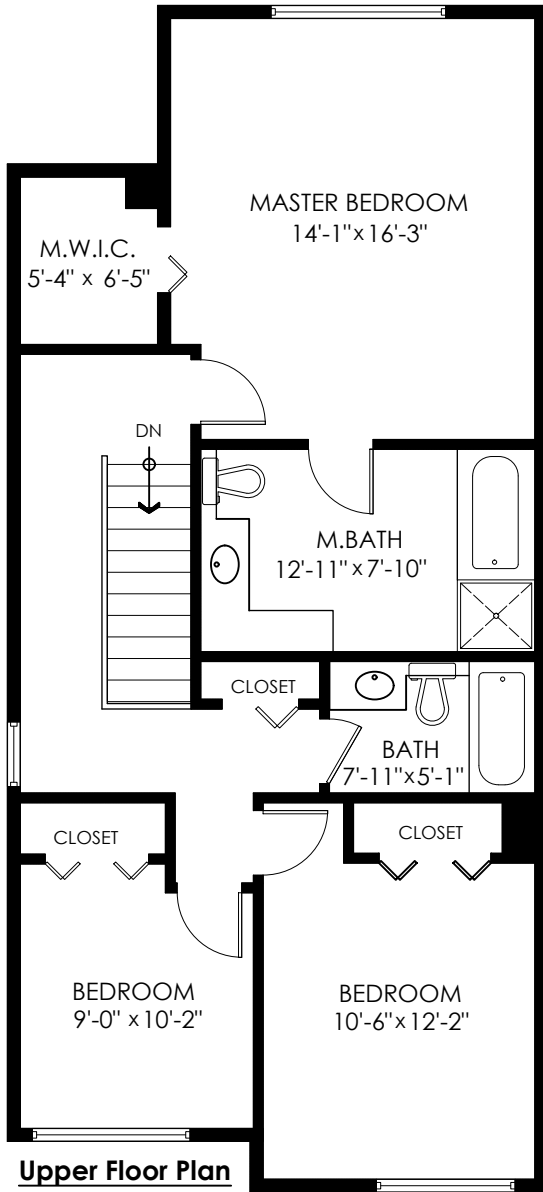
# AXFORD

REAL ESTATE & PROPERTY MANAGEMENT GROUP



778-355-0116  
 info@theaxfords.com  
 www.theaxfords.com

87-758 Riverside Dr  
 Port Coquitlam



**Upper Floor Plan**

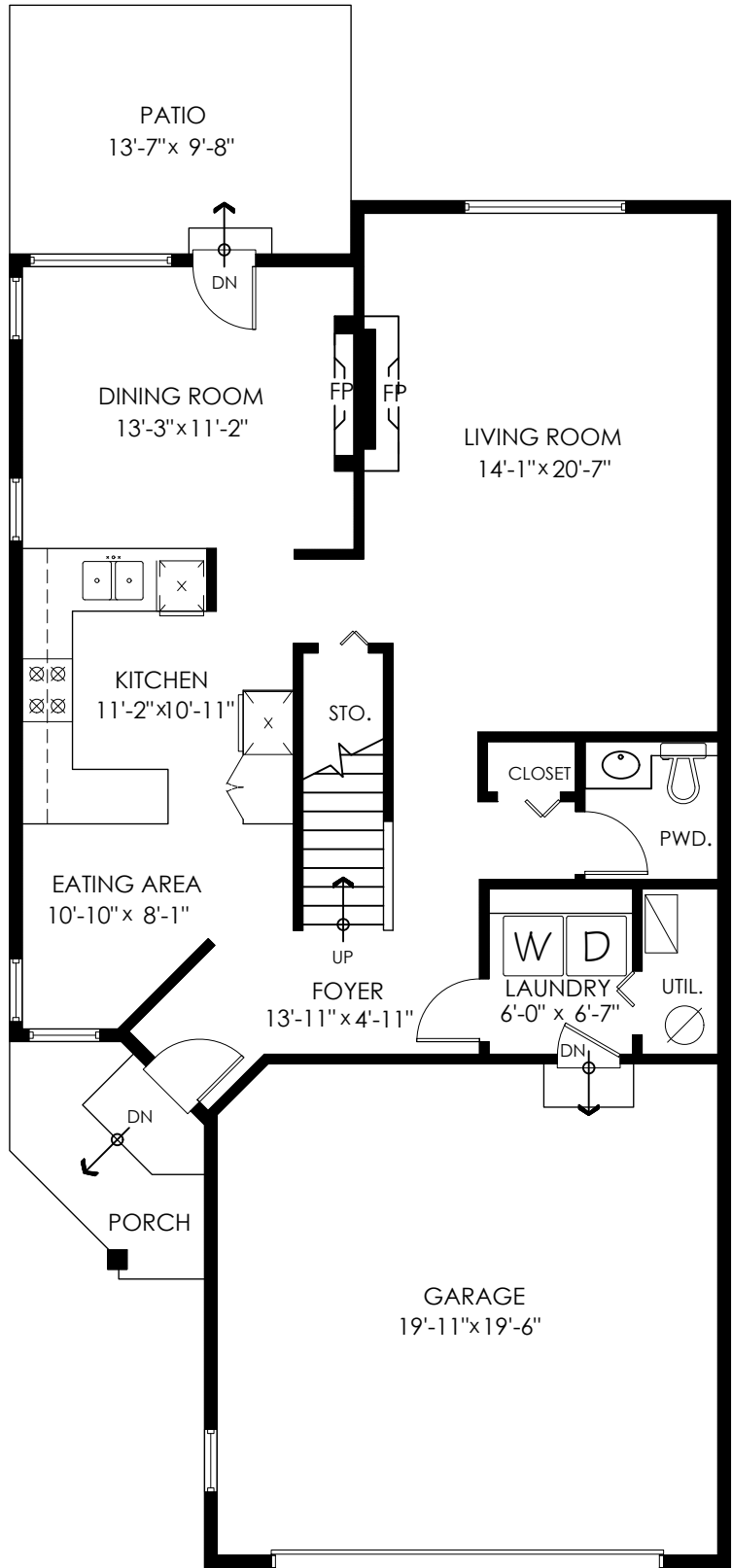
Floor Area: 904 sq.ft.  
 Ceiling Height: 8'



Main Floor: 957 sq.ft.  
 Upper Floor: 904 sq.ft.  
**Total Livable: 1,861 sq.ft.**

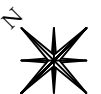
Garage: 416 sq.ft.  
**Grand Total: 2,277 sq.ft.**

Patio: 134 sq.ft.  
 Porch: 55 sq.ft.  
**Total Extras: 189 sq.ft.**



**Main Floor Plan**

Floor Area: 957 sq.ft.  
 Ceiling Height: 7'-11"



MEASURED ON: (2022-09-30)

info@pixlworks.com www.pixlworks.com 604.329.5788



E&O Insured. Total square foot calculated to gross unit area. SQFT based on interior measurements to exterior walls, not taken from original blueprints, may include unfinished area. This is for marketing purposes only and is not intended for architectural/construction use. All details, sizes & placements should be considered approximate within +/- 2% tolerance.