

# 21-11461 236 Street, Maple Ridge

Lower Floor: 228 sq. ft.

Main Floor: 715 sq. ft.

Upper Floor: 738 sq. ft.

**Total Livable: 1,681 sq. ft.**

Garage: 459 sq. ft.

**Grand Total: 2,140 sq. ft.**

Patio: 232 sq. ft.

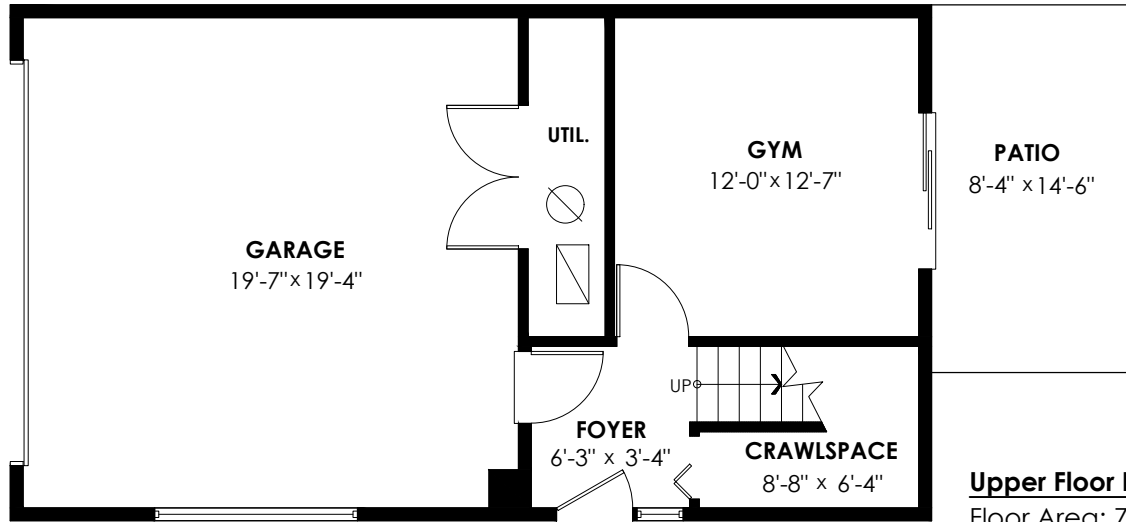
Crawl Space: 52 sq. ft.

**Total Extras: 284 sq. ft.**

## Lower Floor Plan

Floor Area: 228 sq.ft.

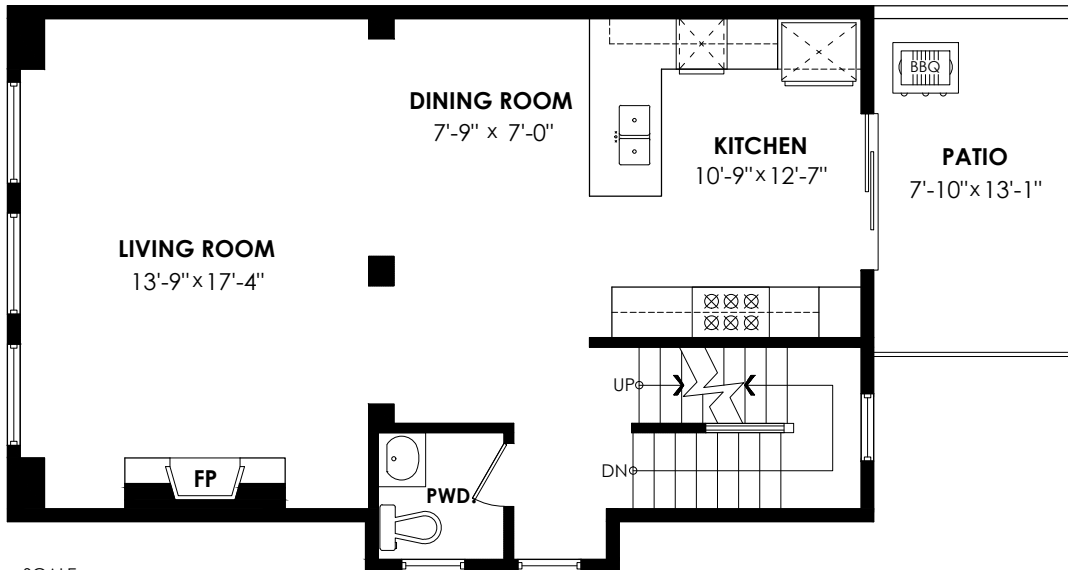
Ceiling Height: 8'-4"



## Main Floor Plan

Floor Area: 715 sq.ft.

Ceiling Height: 8'-1"



## Upper Floor Plan

Floor Area: 738 sq.ft.

Ceiling Height: 8'

