

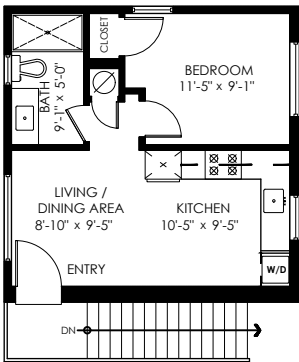
AXFORD

REAL ESTATE & PROPERTY MANAGEMENT GROUP

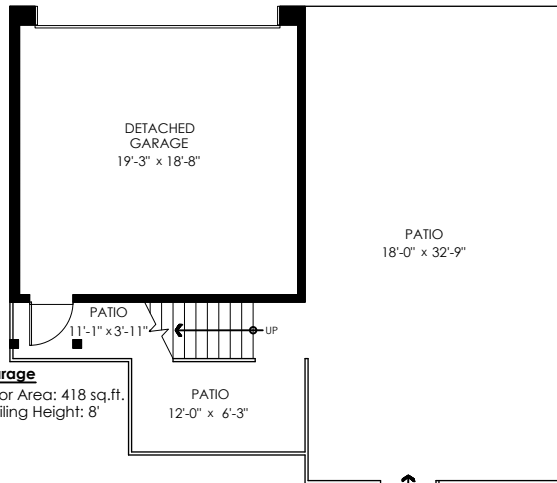
2711 St George St Port Moody



778-355-0116
info@theaxfords.com
www.theaxfords.com



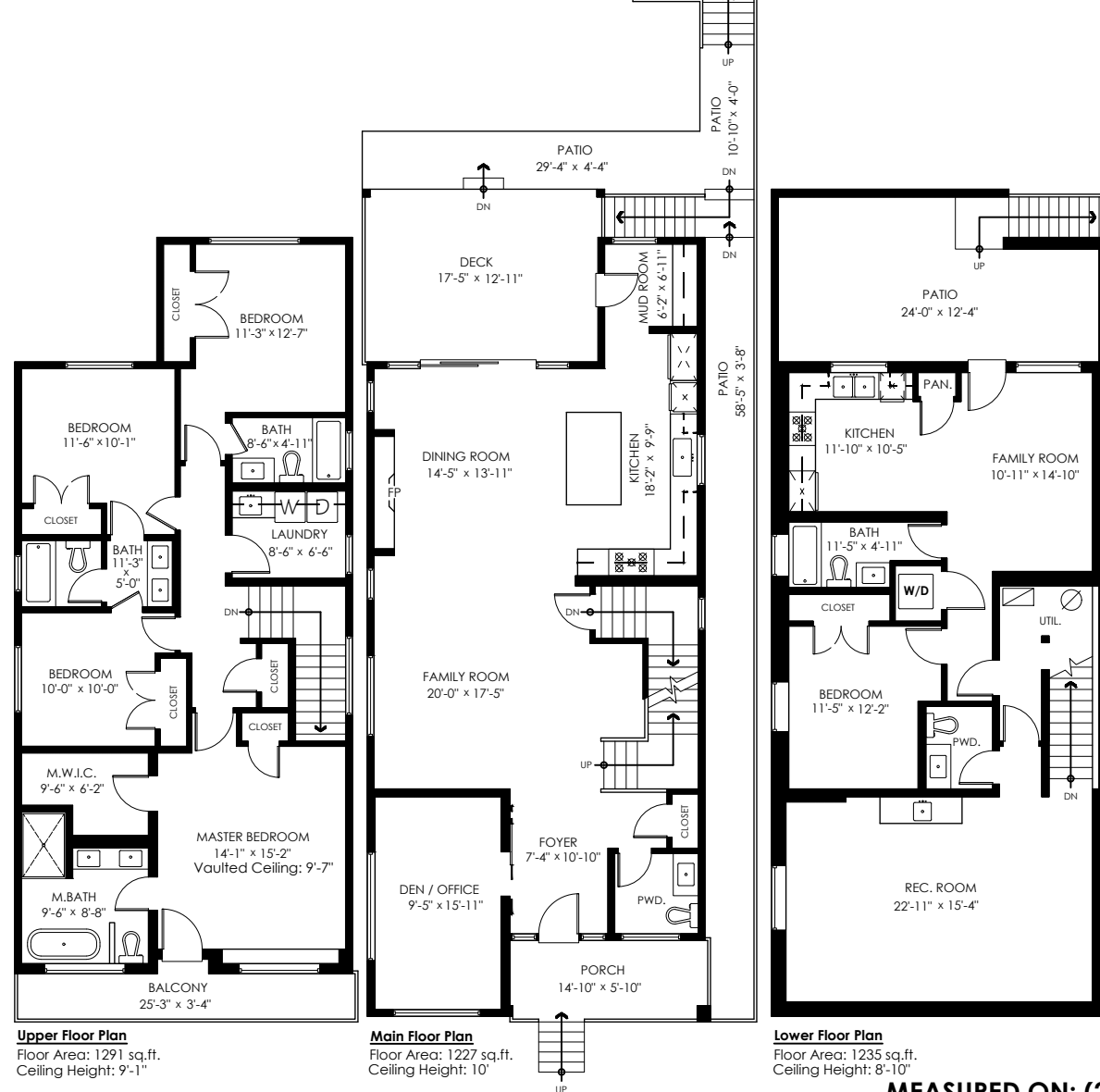
Suite Floor Plan
Floor Area: 418 sq.ft.
Ceiling Height: 8'



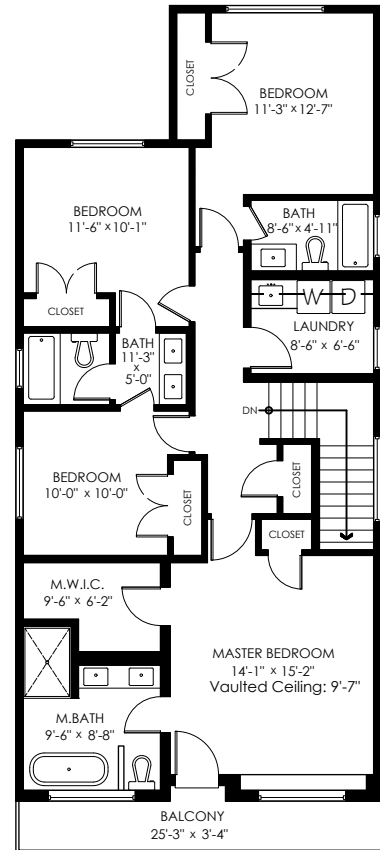
Garage
Floor Area: 418 sq.ft.
Ceiling Height: 8'

| | |
|-----------------------|---------------------|
| Main Floor: | 1,227 sq.ft. |
| Upper Floor: | 1,291 sq.ft. |
| Lower Floor: | 1,235 sq.ft. |
| Suite: | 418 sq.ft. |
| Total Livable: | 4,171 sq.ft. |

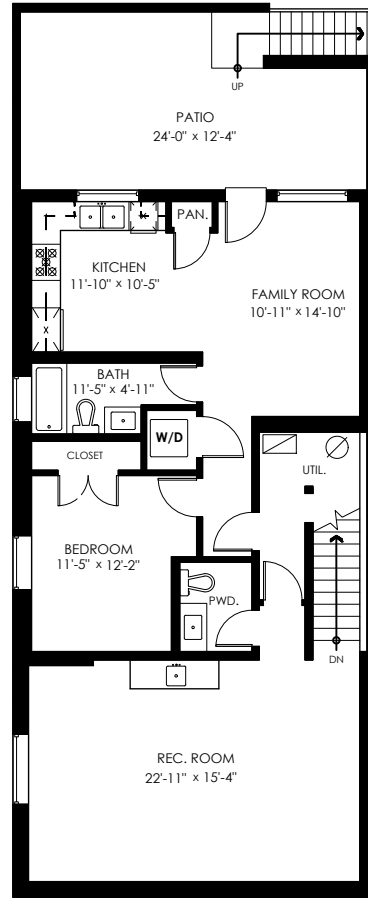
| | |
|----------------------|---------------------|
| Detached Garage: | 418 sq.ft. |
| Patios: | 1,356 sq.ft. |
| Deck: | 226 sq.ft. |
| Balcony: | 86 sq.ft. |
| Porch: | 87 sq.ft. |
| Total Extras: | 1,755 sq.ft. |



Main Floor Plan
Floor Area: 1227 sq.ft.
Ceiling Height: 10'



Upper Floor Plan
Floor Area: 1291 sq.ft.
Ceiling Height: 9'-1"



Lower Floor Plan
Floor Area: 1235 sq.ft.
Ceiling Height: 8'-10"



info@pixlworks.com www.pixlworks.com 604.329.5788



E&O Insured. Total square foot calculated to gross unit area. SQFT based on interior measurements to exterior walls, not taken from original blueprints, may include unfinished area. This is for marketing purposes only and is not intended for architectural/construction use. All details, sizes & placements should be considered approximate within +/- 2% tolerance.