

215-13933 105 Boulevard, Surrey

**Axford** real estate

778-355-0116

info@axfordrealestate.ca

www.axfordrealestate.ca

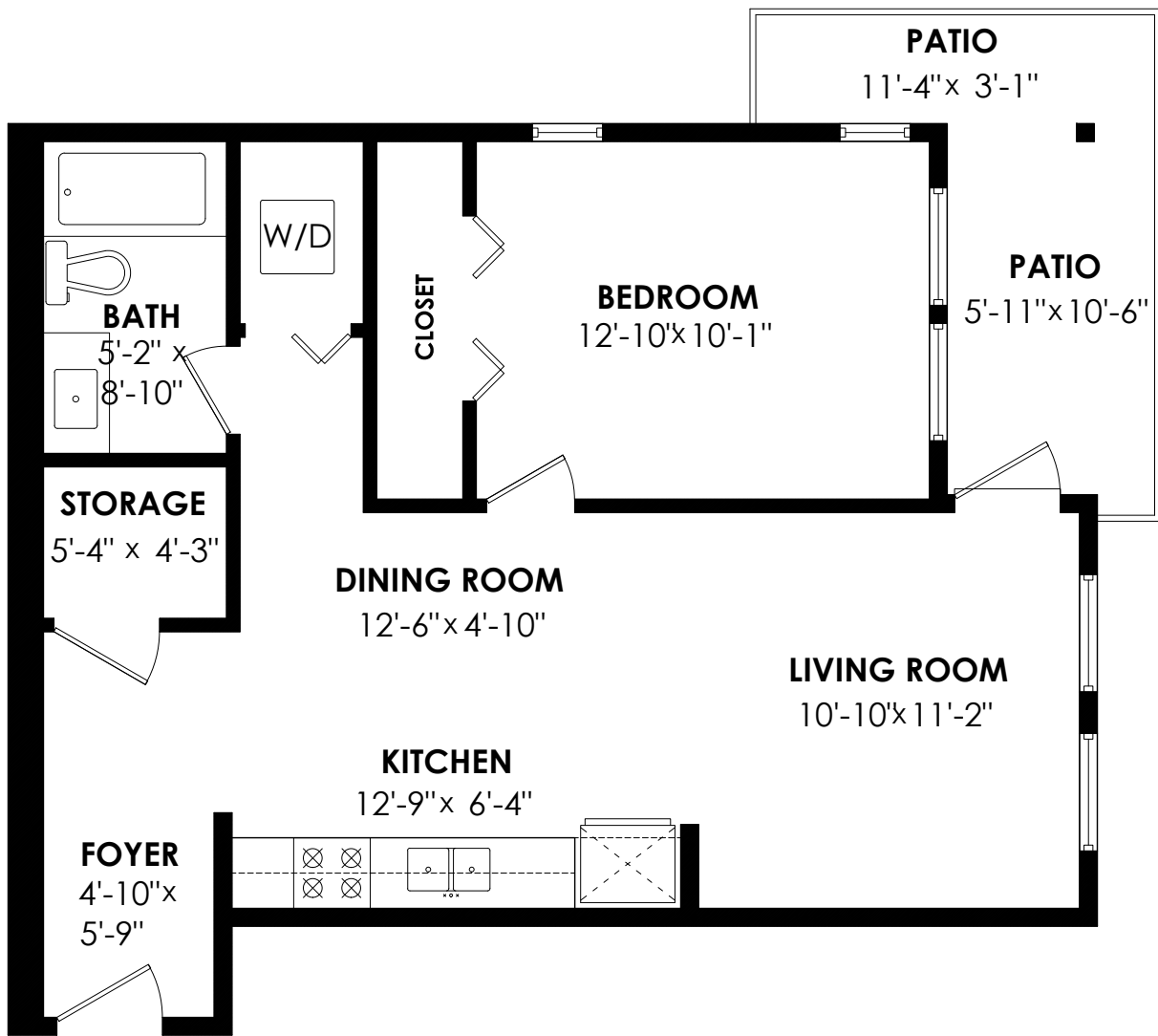
Axford Real Estate

Main Floor: 662 sq. ft. Patio: 103 sq. ft.

Total Livable: 662 sq. ft. Total Extras: 103 sq. ft.

### Main Floor Plan

Floor Area: 662 sq.ft.  
Ceiling Height: 9'-11"



SCALE

