

AXFORD

REAL ESTATE & PROPERTY MANAGEMENT GROUP



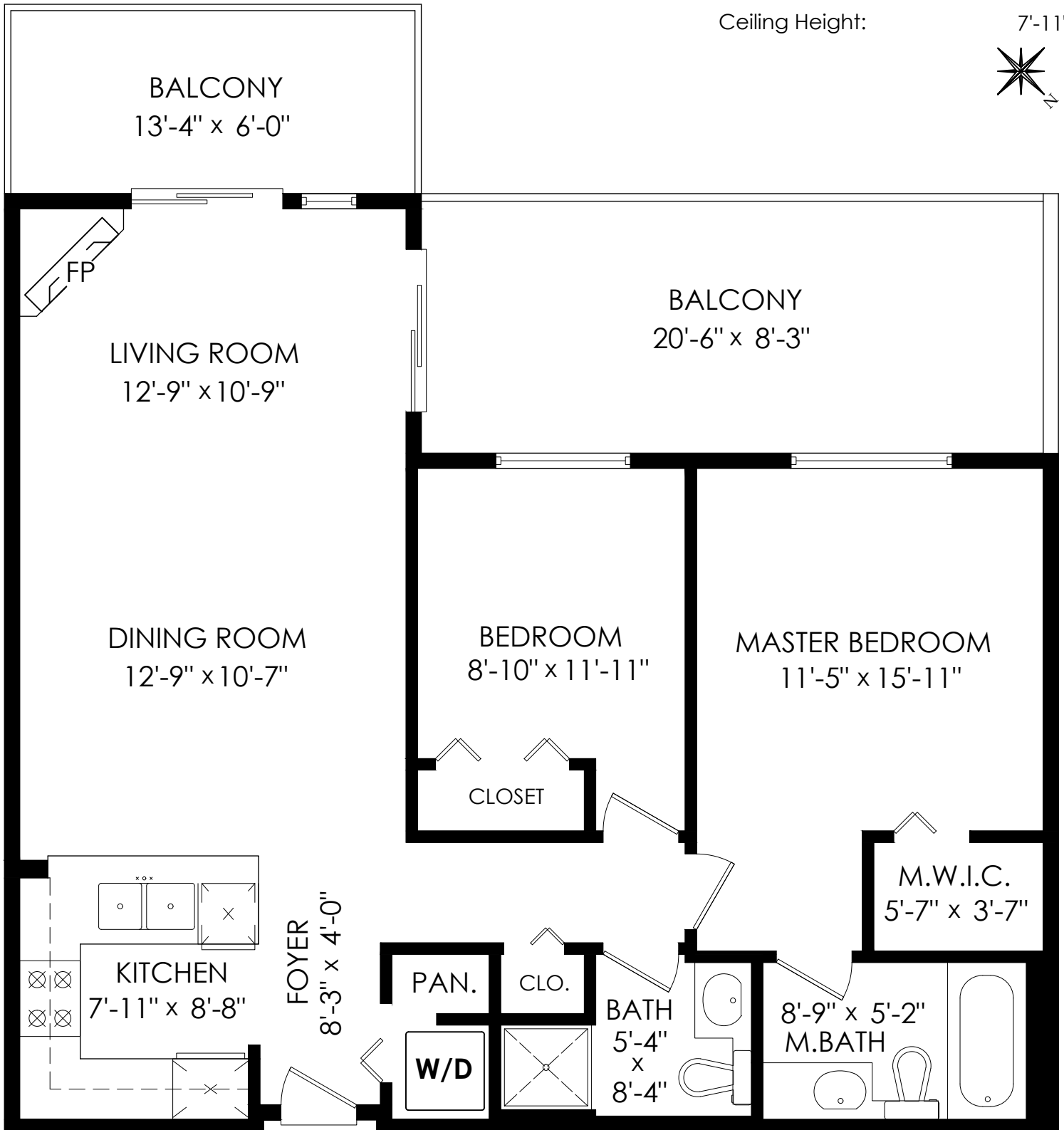
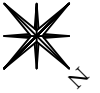
778-355-0116
info@theaxfords.com
www.theaxfords.com

204-260 Newport Dr, Port Moody

Floor Area: 898 sq.ft.

Balconies: 262 sq.ft.

Ceiling Height: 7'-11"



MEASURED ON: (2021-07-08)

Measurements, Design & Scanning | 604-329-5788



E&O Insured. Total square foot calculated to gross unit area. SQFT based on interior measurements to exterior walls, not taken from original blueprints, may include unfinished area.

This is for marketing purposes only and is not intended for architectural/construction use. All details, sizes & placements should be considered approximate within +/- 2% tolerance. www.PixiWorks.com

