

AXFORD

REAL ESTATE & PROPERTY MANAGEMENT GROUP

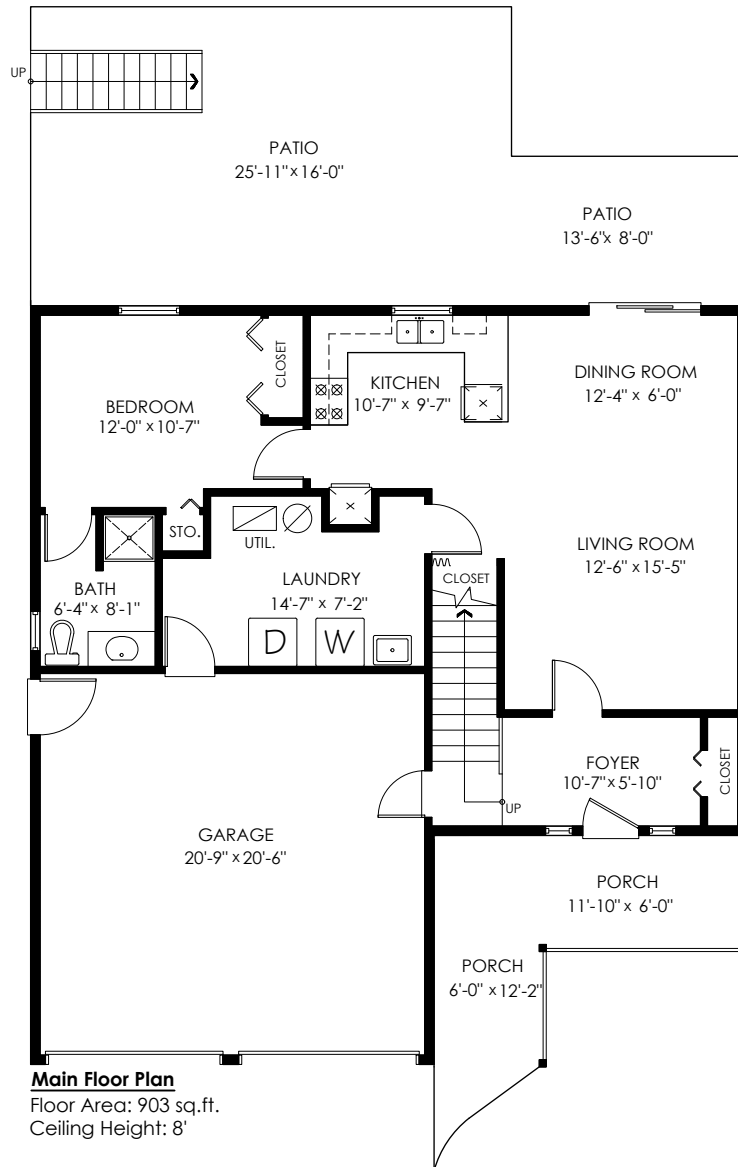


778-355-0116
info@theaxfords.com
www.theaxfords.com

23210 124 Ave, Maple Ridge

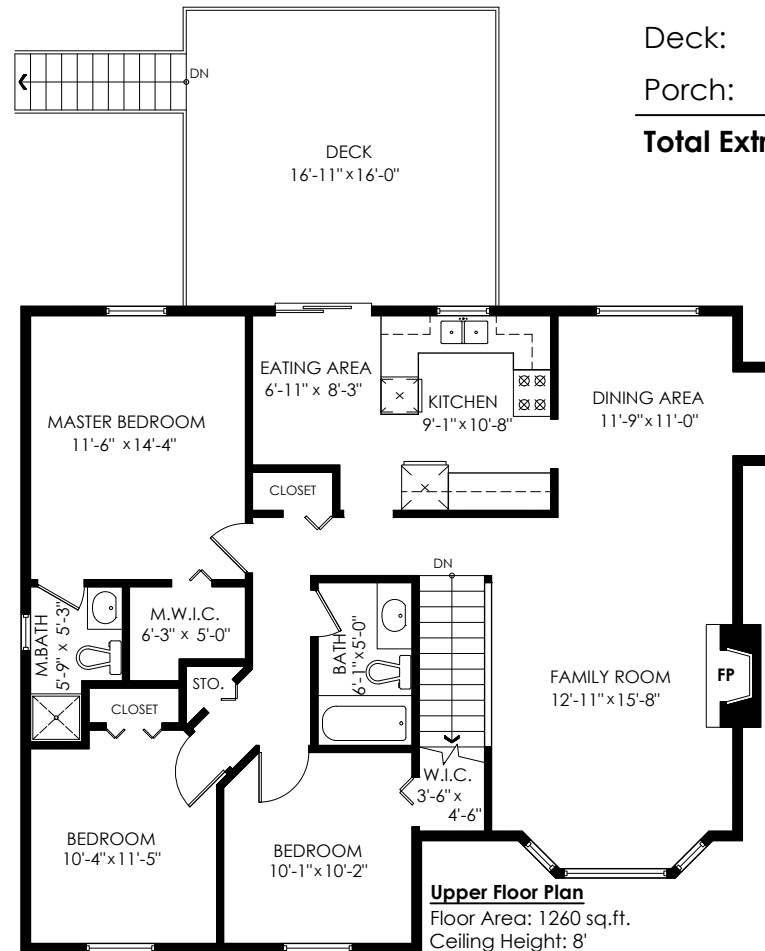
Main Floor: 903 sq.ft.
Upper Floor: 1,260 sq.ft.
Total: 2,163 sq.ft.

Garage: 447 sq.ft.
Patio: 512 sq.ft.
Deck: 270 sq.ft.
Porch: 153 sq.ft.
Total Extras: 1,382 sq.ft.



Main Floor Plan

Floor Area: 903 sq.ft.
Ceiling Height: 8'



Upper Floor Plan

Floor Area: 1260 sq.ft.
Ceiling Height: 8'



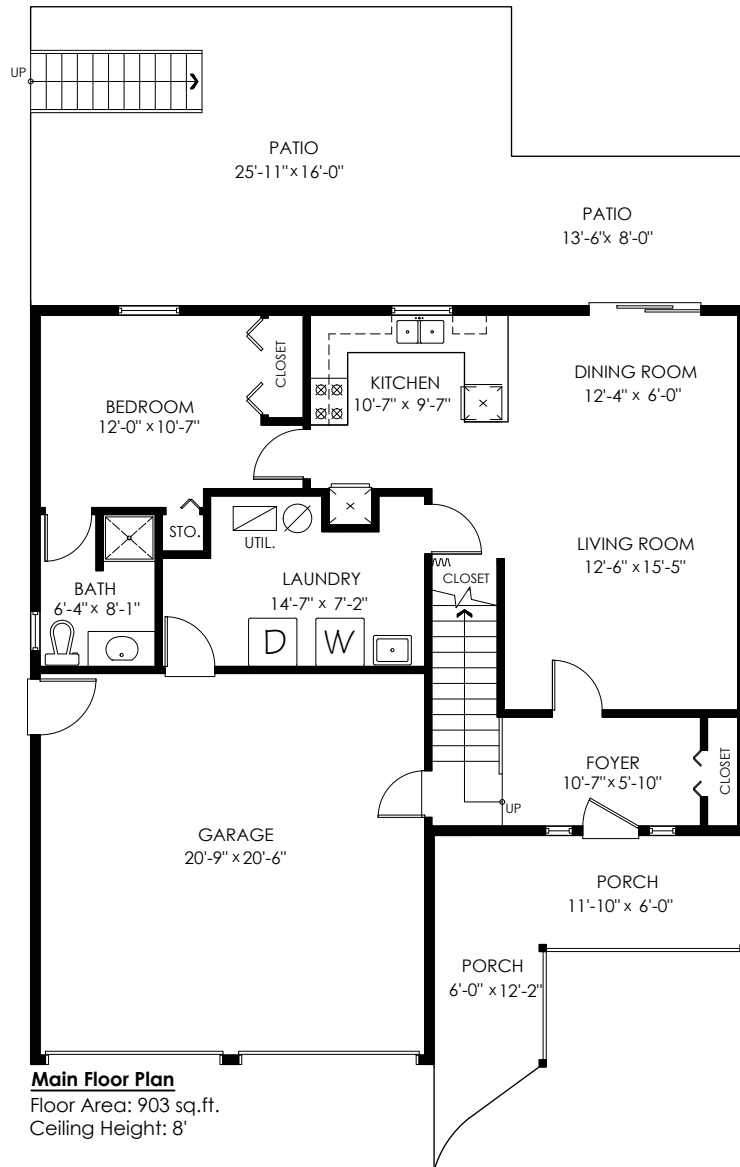
Measurements, Design & Scanning | 604-329-5788

E&O Insured for \$3,000,000. Total square foot calculated to gross unit area. SQFT based on interior measurements to exterior walls, not taken from original blueprints, may include unfinished area. This is for marketing purposes only and is not intended for architectural/construction use. All details, sizes & placements should be considered approximate within +/- 2% tolerance. www.PixlWorks.com

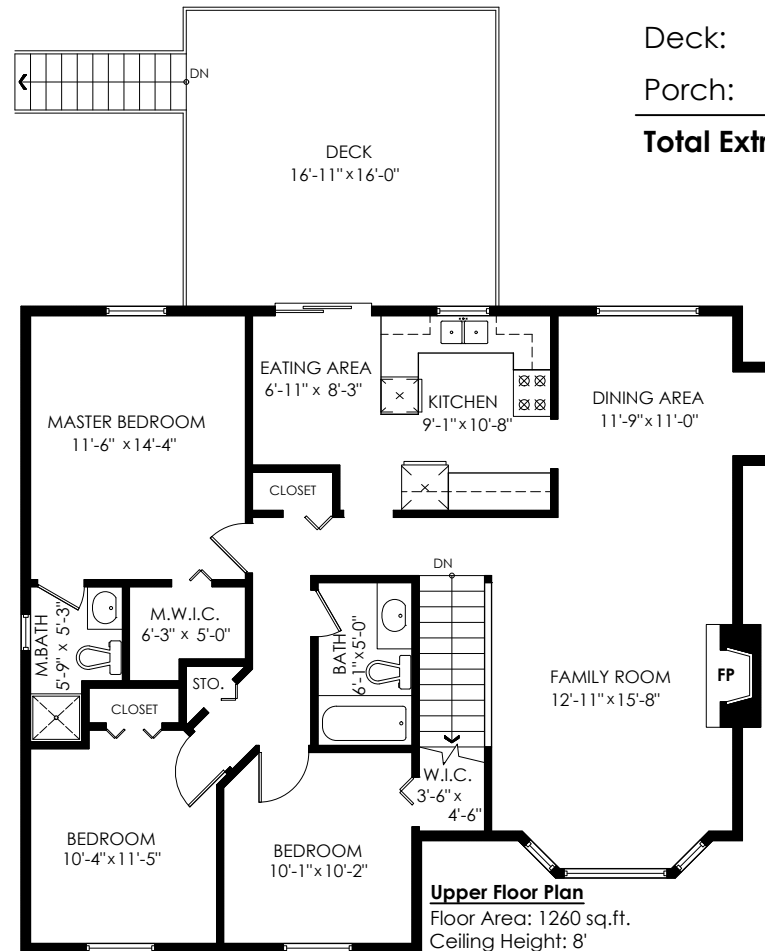
23210 124 Ave, Maple Ridge

Main Floor:	903 sq.ft.
Upper Floor:	1,260 sq.ft.
Total:	2,163 sq.ft.

Garage:	447 sq.ft.
Patio:	512 sq.ft.
Deck:	270 sq.ft.
Porch:	153 sq.ft.
Total Extras:	1,382 sq.ft.



Main Floor Plan
 Floor Area: 903 sq.ft.
 Ceiling Height: 8'



Upper Floor Plan
 Floor Area: 1260 sq.ft.
 Ceiling Height: 8'



Measurements, Design & Scanning | 604-329-5788



Houses:

Total square footage is calculated to the outside of exterior walls.

Room sizes are dimensioned to the inside of the walls. This is because you need to know what you can fit in that room. When you add up the total of the room sizes it will not equal the total square footage of the property. This method of adding up room sizes will not account for wall thickness, interior hallways, exterior wall thickness, closets and many other areas that are included is total sqft.

Any space that is not suitable for year-round use or has a ceiling height of less than 4 feet will not be considered living space. An example of this includes a deck, garage or attic. If there isn't heat, insulation or room for an adult to stand, then it will not be included in the living space.

Cantilevered fireplaces, chimneys and plant windows are also not considered living space.

Included in the living space will be the measurements for stair treads for the floor they service as well as the space under the lowest floor's stairs.

Areas open to the floor below (also known as double height ceilings) are not considered living space because there is no floor.

23210 124 Ave, Maple Ridge

Main Floor:	903 sq.ft.
Upper Floor:	1,260 sq.ft.
Total:	2,163 sq.ft.

Garage:	447 sq.ft.
Patio:	512 sq.ft.
Deck:	270 sq.ft.
Porch:	153 sq.ft.
Total Extras:	1,382 sq.ft.

