

AXFORD

REAL ESTATE & PROPERTY MANAGEMENT GROUP

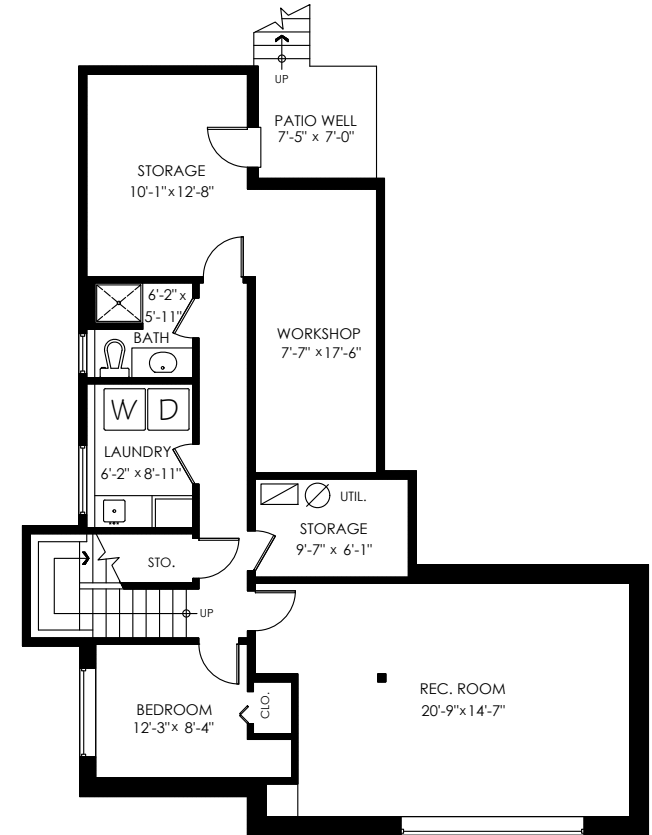
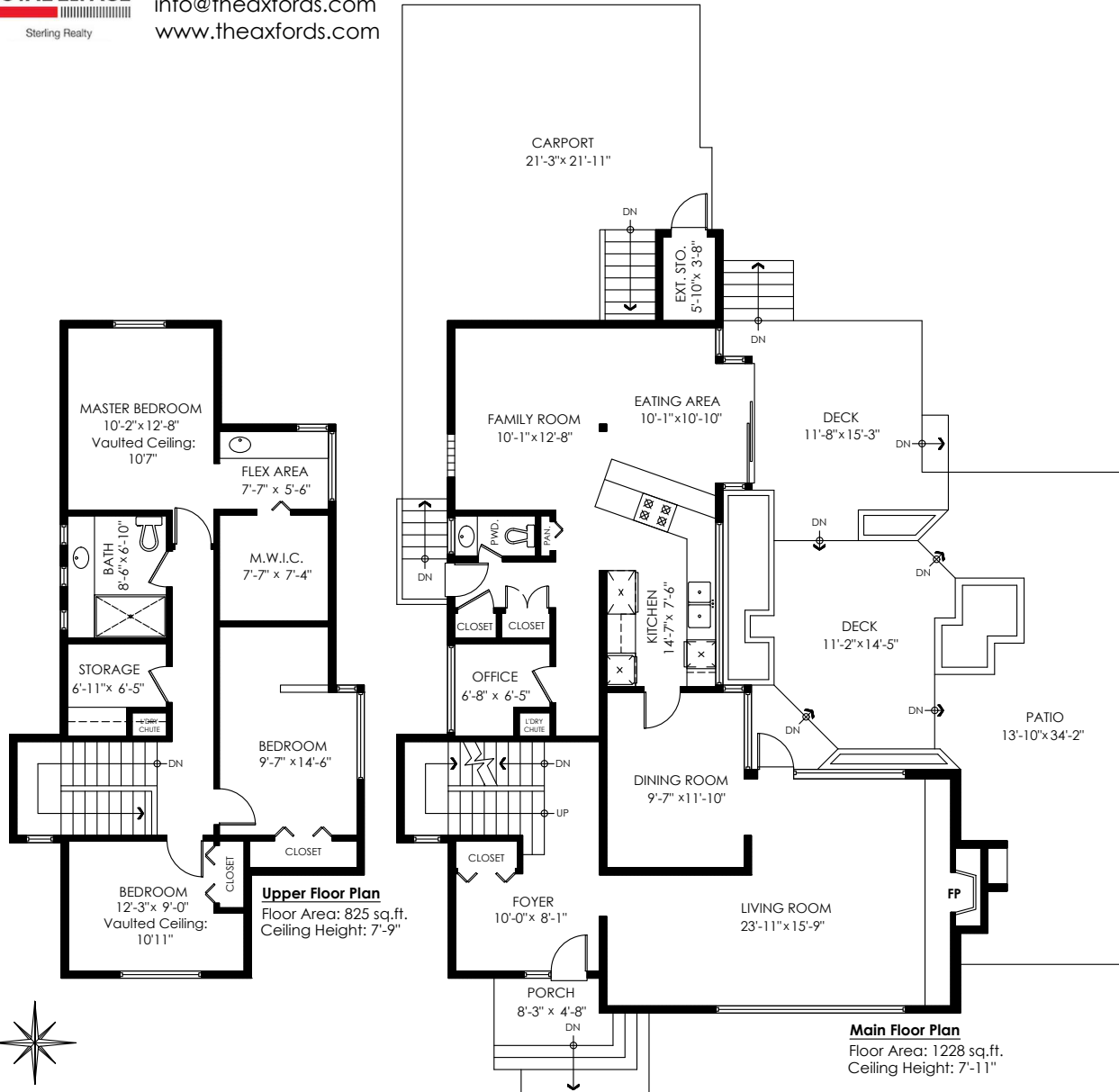


778-355-0116
info@theaxfords.com
www.theaxfords.com

6350 Fremlin St, Vancouver

Main Floor:	1,228 sq.ft.
Upper Floor:	825 sq.ft.
Lower Floor:	1,154 sq.ft.
Total Livable:	3,207 sq.ft.

Carport:	414 sq.ft.
Patio:	390 sq.ft.
Patio Well:	54 sq.ft.
Ext. Storage:	29 sq.ft.
Deck:	357 sq.ft.
Porch:	36 sq.ft.
Total Extras:	1,280 sq.ft.



cotala

E&O Insured. Total square foot calculated to gross unit area. SQFT based on interior measurements to exterior walls, not taken from original blueprints, may include unfinished area. This is for marketing purposes only and is not intended for architectural/construction use. All details, sizes & placements should be considered approximate within +/- 2% tolerance.

MEASURED ON: (2022-02-25)
info@pixlworks.com www.pixlworks.com 604.329.5788

