

AXFORD

REAL ESTATE & PROPERTY MANAGEMENT GROUP

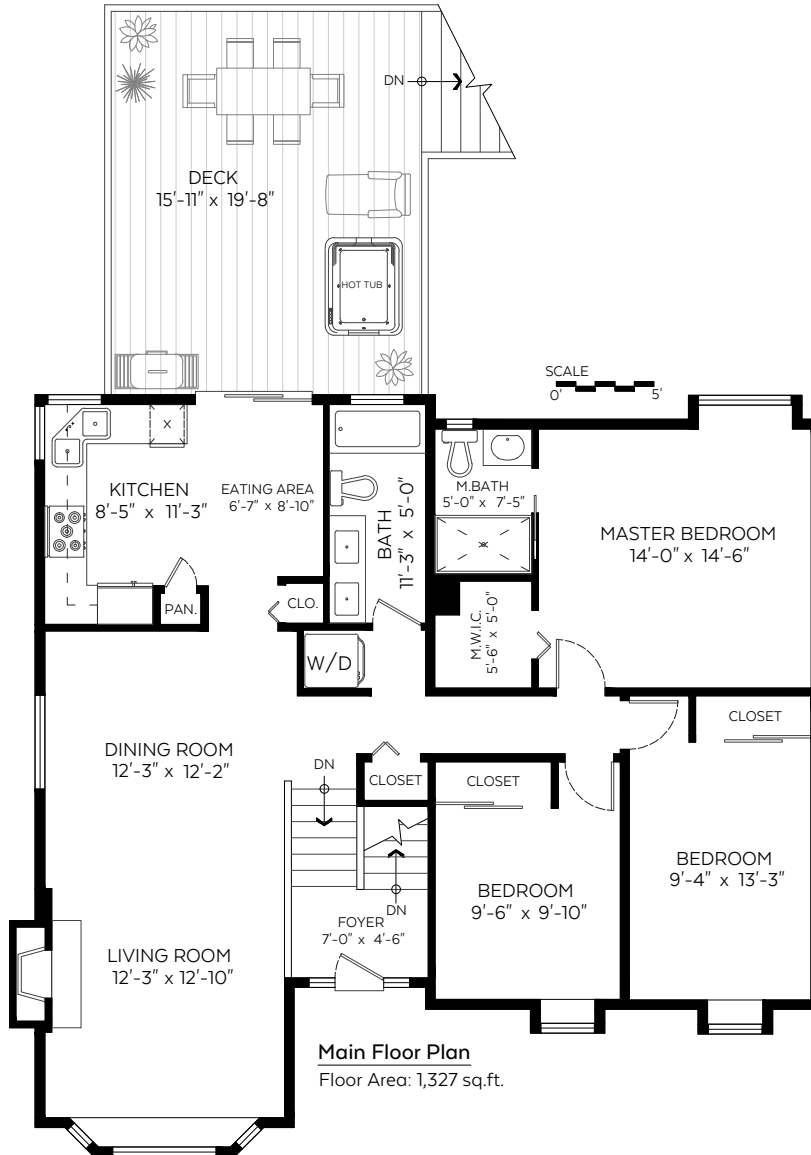
778.355.0116 | info@theaxfords.com
www.theaxfords.com

1300 Sherman Street,
Coquitlam, B.C.

Main Floor:	1,327 sq.ft.
Lower Floor:	876 sq.ft.
Total:	2,203 sq.ft.

Auxiliary Area

Garage:	434 sq.ft.
Deck:	314 sq.ft.



Measured on: Jan. 31, 2019



The floor plan is not suitable for architectural/construction and is covered under E&O. © Excelsior Measuring Inc. 2019. All rights reserved for Excelsior Measuring Inc. Users shall not publish and distribute such material (in whole or in part) and/or incorporate it in other works in any form.

