

# AXFORD

REAL ESTATE & PROPERTY MANAGEMENT GROUP



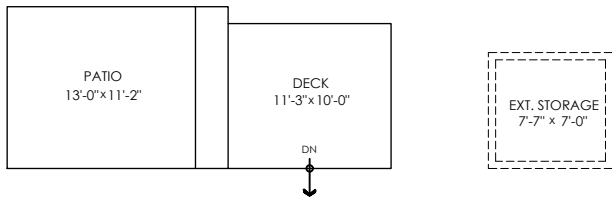
778-355-0116  
 info@theaxfords.com  
 www.theaxfords.com

924 Merritt St,  
 Coquitlam

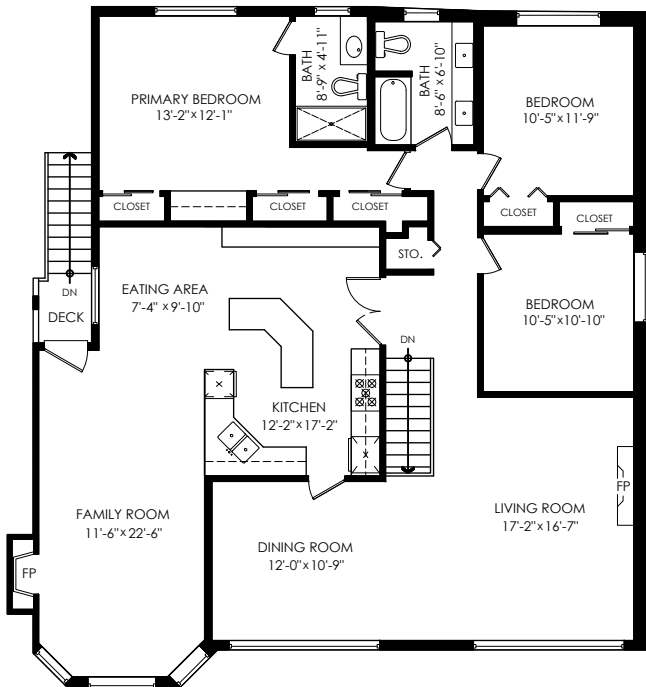
Main Floor: 1,816 sq.ft.  
 Lower Floor: 1,367 sq.ft.  
 Total Livable: 3,183 sq.ft.

Garage: 475 sq.ft.  
 Grand Total: 3,658 sq.ft.

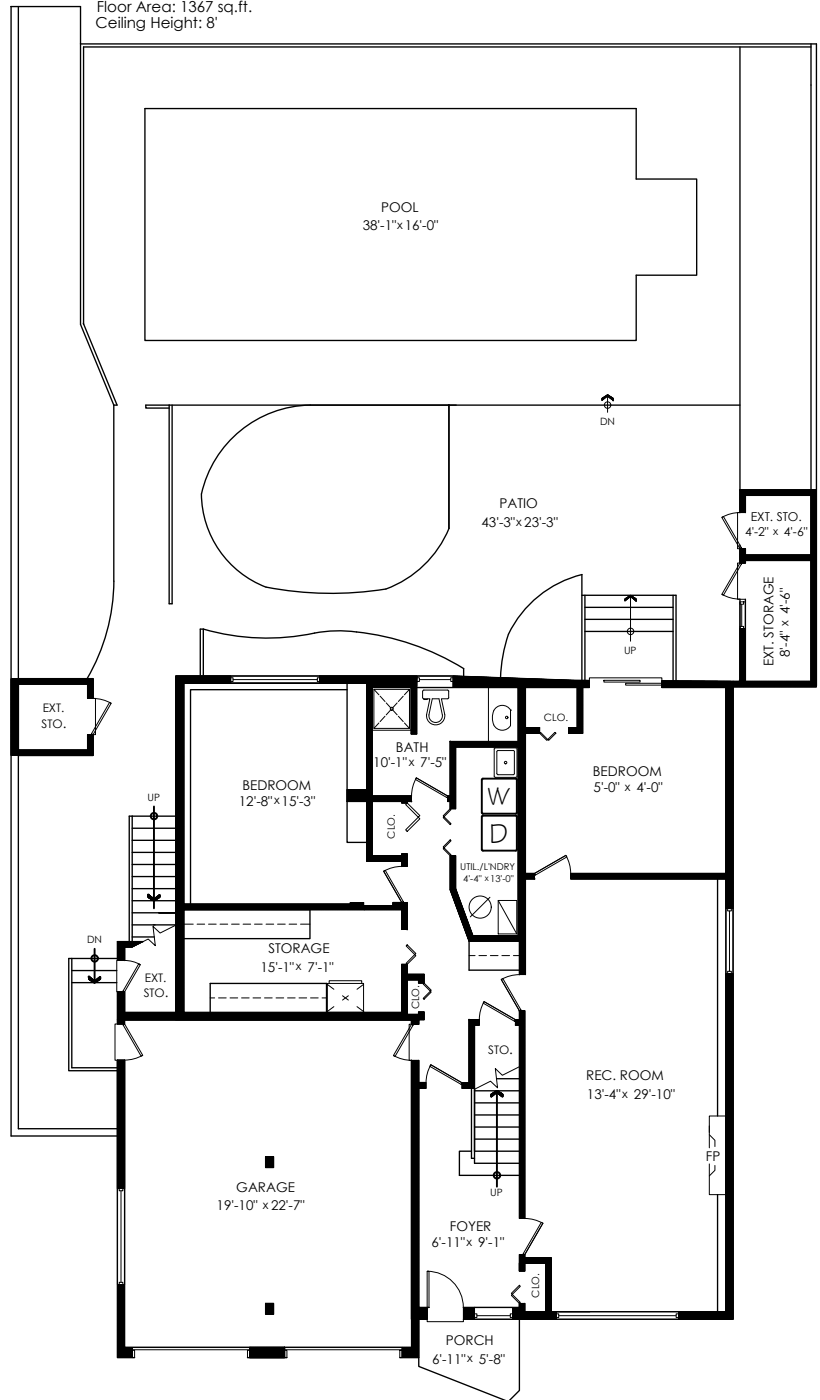
Patios: 1,712 sq.ft.  
 Ext. Storages: 194 sq.ft.  
 Decks: 130 sq.ft.  
 Porch: 32 sq.ft.  
 Total Extras: 2,068 sq.ft.



**Main Floor Plan**  
 Floor Area: 1816 sq.ft.  
 Ceiling Height: 8'



**Lower Floor Plan**  
 Floor Area: 1367 sq.ft.  
 Ceiling Height: 8'



SCALE  
 0' 5'



E&O Insured. Total square foot calculated to gross unit area. SQFT based on interior measurements to exterior walls, not taken from original blueprints, may include unfinished area.

This is for marketing purposes only and is not intended for architectural/construction use. All details, sizes & placements should be considered approximate within +/- 2% tolerance.

MEASURED ON: (2021-09-07)

Measurements, Design & Scanning | 604-329-5788

www.PixlWorks.com

