

AXFORD

REAL ESTATE & PROPERTY MANAGEMENT GROUP



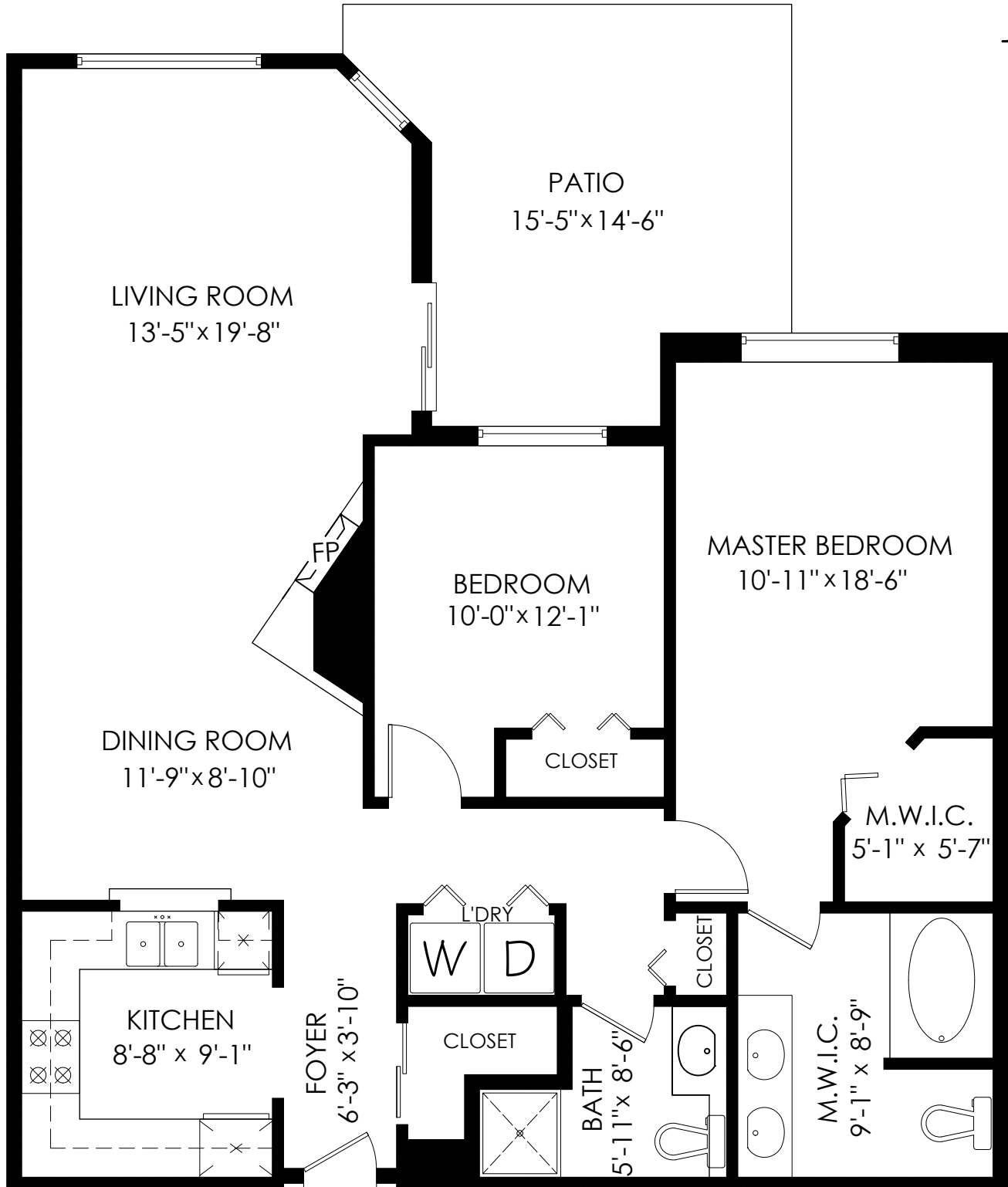
778-355-0116
info@theaxfords.com
www.theaxfords.com

117-2995 Princess Crescent, Coquitlam

Floor Area: 1,123 sq.ft.

Patio: 175 sq.ft.

Ceiling Height: 8'-10"



cotala

MEASURED ON: (2021-09-23)

info@pixlworks.com www.pixlworks.com 604.329.5788

E&O Insured. Total square foot calculated to gross unit area. SQFT based on interior measurements to exterior walls, not taken from original blueprints, may include unfinished area. This is for marketing purposes only and is not intended for architectural/construction use. All details, sizes & placements should be considered approximate within +/- 2% tolerance.

