

AXFORD

REAL ESTATE & PROPERTY MANAGEMENT GROUP



778-355-0116
info@theaxfords.com
www.theaxfords.com

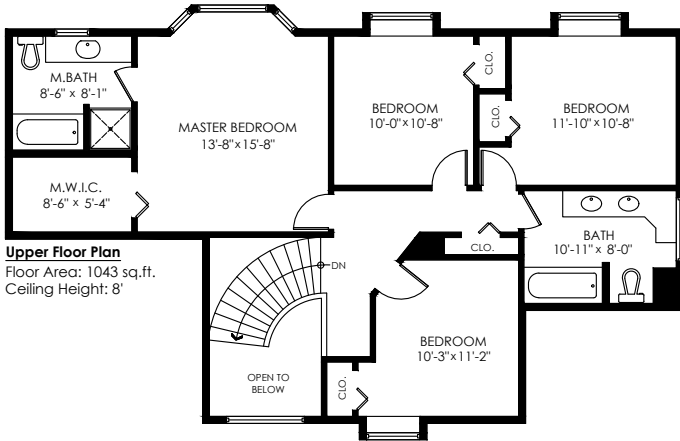
2480 Gale Ave, Coquitlam

Main Floor: 1,446 sq.ft.
Upper Floor: 1,043 sq.ft.
Lower Floor: 1,420 sq.ft.
Total Livable: 3,909 sq.ft.

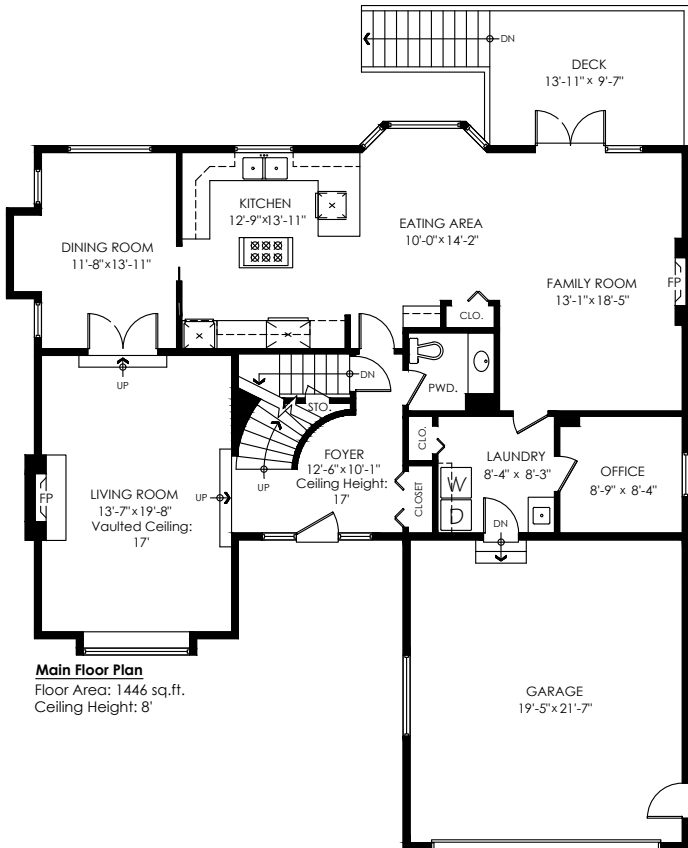
Garage: 452 sq.ft.
Grand Total: 4,361 sq.ft.

Patio: 444 sq.ft.
Deck: 134 sq.ft.
Total Extras: 578 sq.ft.

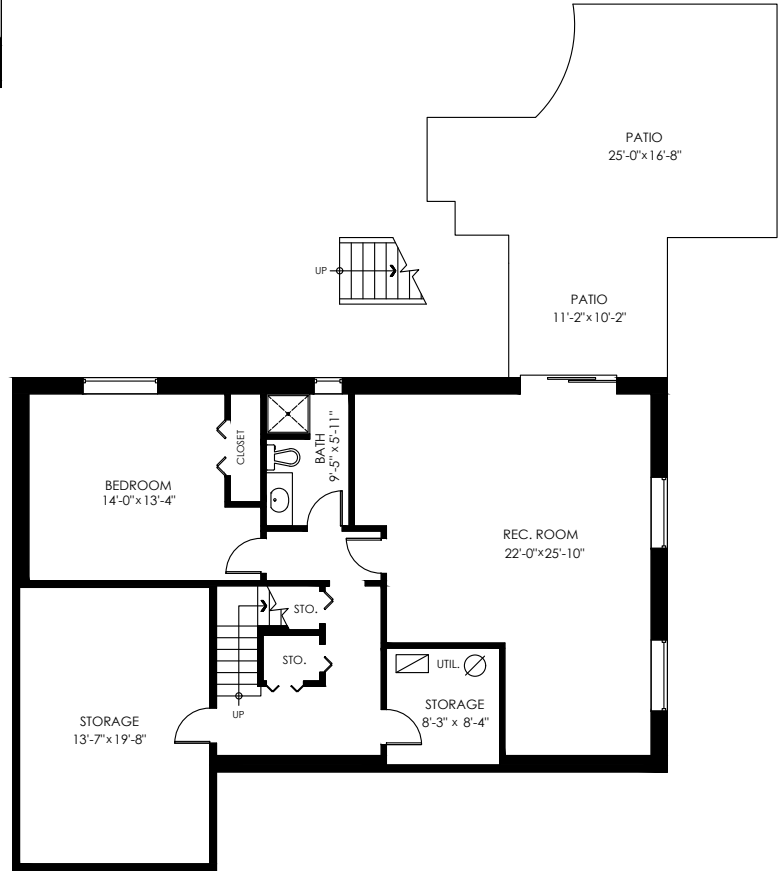
Open To Below: 57 sq.ft.



Upper Floor Plan
Floor Area: 1043 sq.ft.
Ceiling Height: 8'



Main Floor Plan
Floor Area: 1446 sq.ft.
Ceiling Height: 8'



Lower Floor Plan
Floor Area: 1420 sq.ft.
Ceiling Height: 7'-7"



MEASURED ON: (2022-02-08)

info@pixlworks.com www.pixlworks.com 604.329.5788



cotala

E&O Insured. Total square foot calculated to gross unit area. SQFT based on interior measurements to exterior walls, not taken from original blueprints, may include unfinished area. This is for marketing purposes only and is not intended for architectural/construction use. All details, sizes & placements should be considered approximate within +/- 2% tolerance.