

AXFORD

REAL ESTATE & PROPERTY MANAGEMENT GROUP



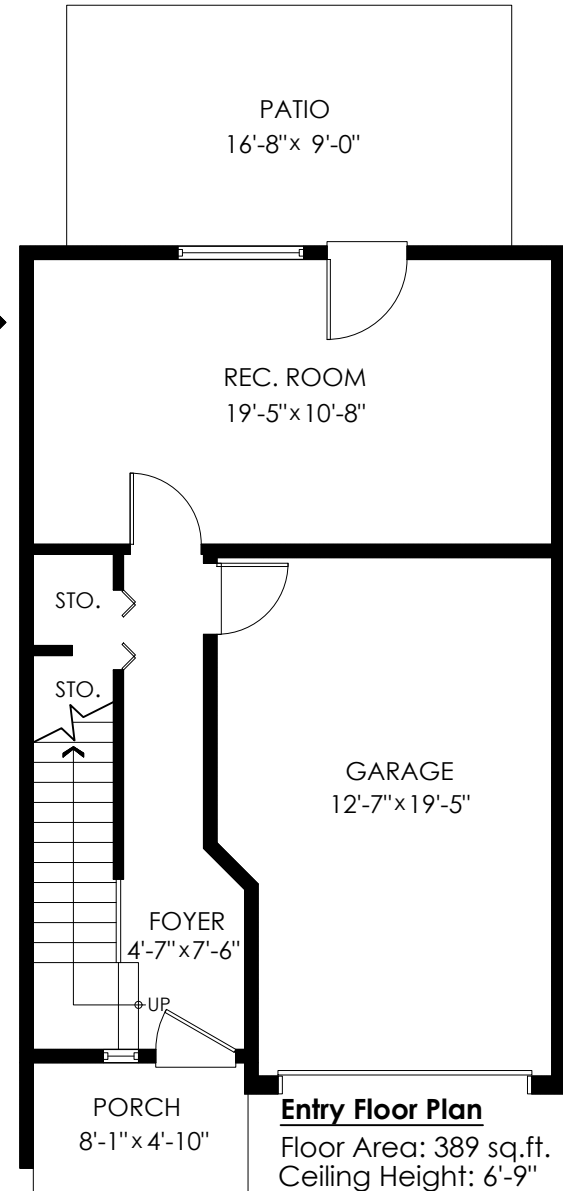
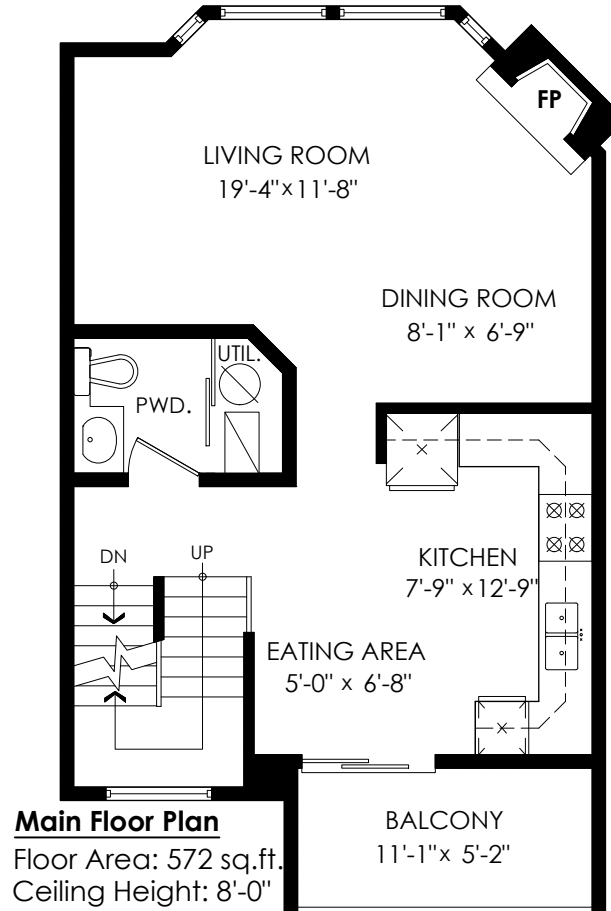
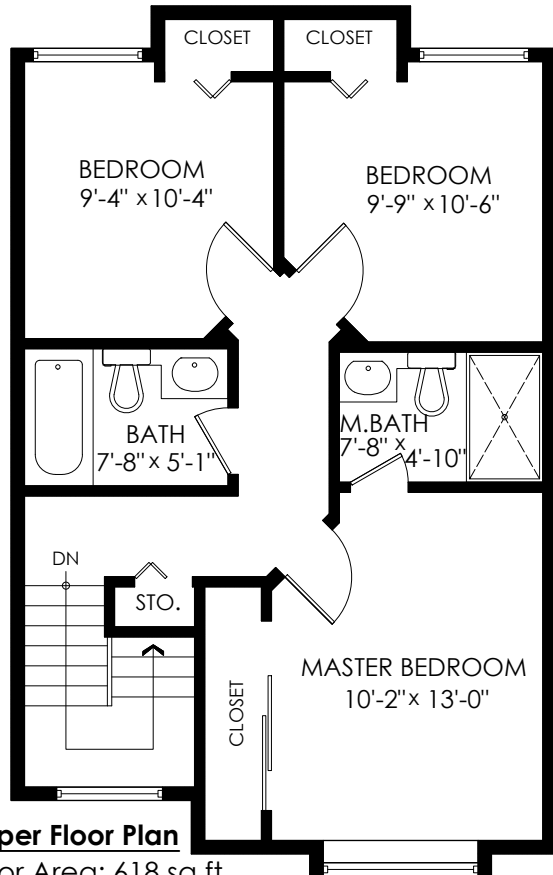
778-355-0116
info@theaxfords.com
www.theaxfords.com



Main Floor: 572 sq.ft.
Upper Floor: 618 sq.ft.
Lower Floor: 389 sq.ft.
Total: 1,579 sq.ft.

Garage: 249 sq.ft.
Patio: 150 sq.ft.
Balcony: 64 sq.ft.
Porch: 39 sq.ft.
Total Extras: 502 sq.ft.

**17-2458 Pitt River Rd,
Port Coquitlam**



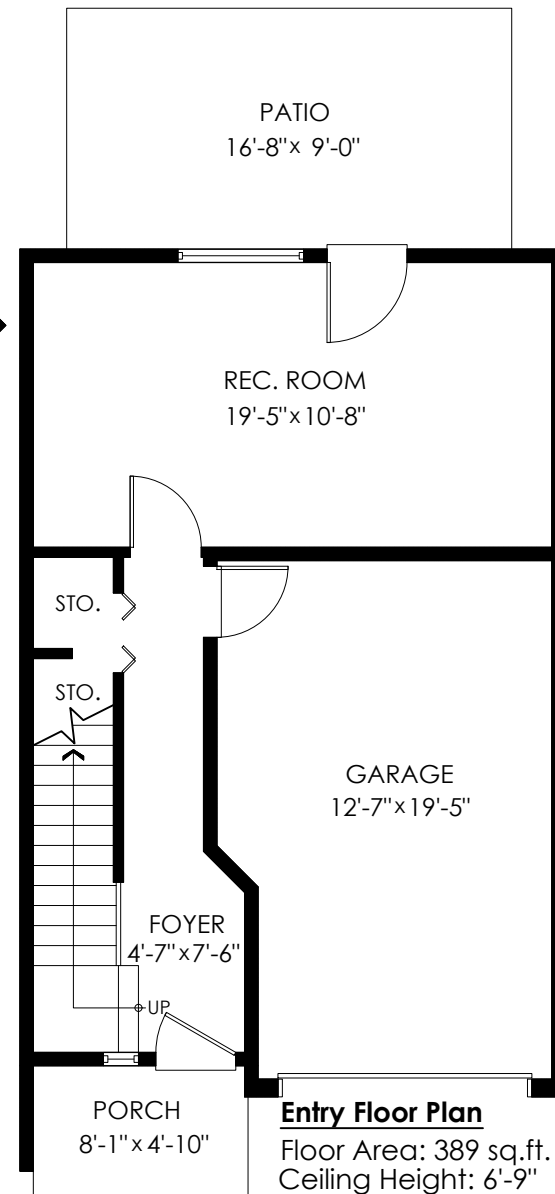
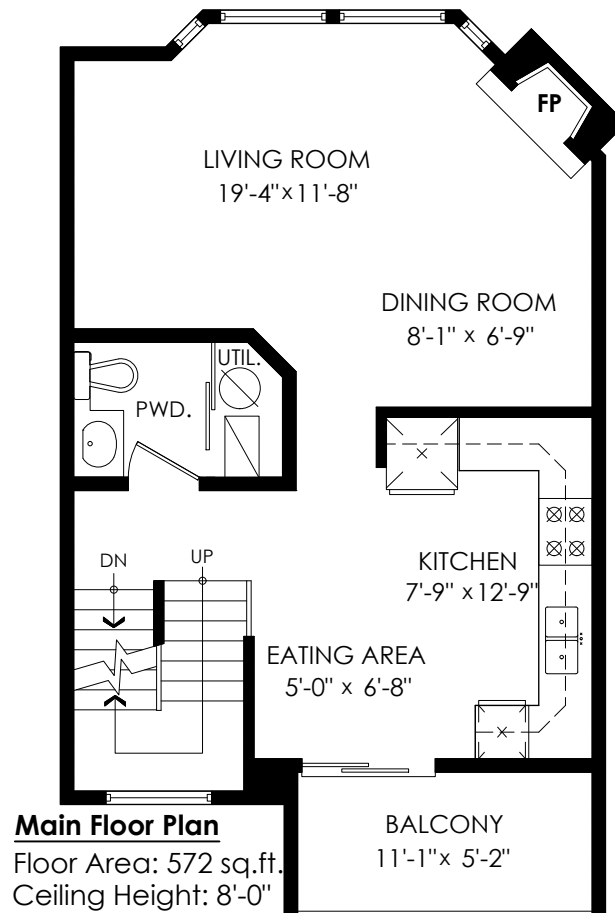
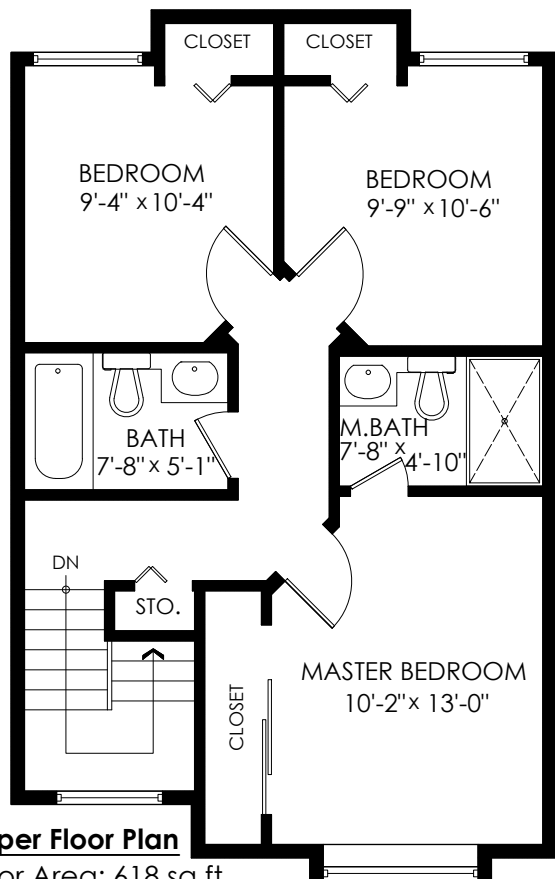
Measurements, Design & Scanning | 604-329-5788

E&O Insured for \$1,000,000. Total square foot calculated to gross unit area. SQFT based on interior measurements to exterior walls, not taken from original blueprints, may include unfinished area. This is for marketing purposes only and is not intended for architectural/construction use. All details, sizes & placements should be considered approximate within +/- 2% tolerance. www.PixlWorks.com

17-2458 Pitt River Rd, Port Coquitlam

Main Floor: 572 sq.ft.
 Upper Floor: 618 sq.ft.
 Lower Floor: 389 sq.ft.
Total: 1,579 sq.ft.

Garage: 249 sq.ft.
 Patio: 150 sq.ft.
 Balcony: 64 sq.ft.
 Porch: 39 sq.ft.
Total Extras: 502 sq.ft.



Measurements, Design & Scanning | 604-329-5788

E&O Insured for \$1,000,000. Total square foot calculated to gross unit area. SQFT based on interior measurements to exterior walls, not taken from original blueprints, may include unfinished area. This is for marketing purposes only and is not intended for architectural/construction use. All details, sizes & placements should be considered approximate within +/- 2% tolerance. www.PixlWorks.com



Houses:

Total square footage is calculated to the outside of exterior walls.

Room sizes are dimensioned to the inside of the walls. This is because you need to know what you can fit in that room. When you add up the total of the room sizes it will not equal the total square footage of the property. This method of adding up room sizes will not account for wall thickness, interior hallways, exterior wall thickness, closets and many other areas that are included is total sqft.

Any space that is not suitable for year-round use or has a ceiling height of less than 4 feet will not be considered living space. An example of this includes a deck, garage or attic. If there isn't heat, insulation or room for an adult to stand, then it will not be included in the living space.

Cantilevered fireplaces, chimneys and plant windows are also not considered living space.

Included in the living space will be the measurements for stair treads for the floor they service as well as the space under the lowest floor's stairs.

Areas open to the floor below (also known as double height ceilings) are not considered living space because there is no floor.

Main Floor:	572 sq.ft.
Upper Floor:	618 sq.ft.
Lower Floor:	389 sq.ft.
Total:	1,579 sq.ft.

17-2458 Pitt River Rd, Port Coquitlam

Garage:	249 sq.ft.
Patio:	150 sq.ft.
Balcony:	64 sq.ft.
Porch:	39 sq.ft.
Total Extras:	502 sq.ft.

