

# AXFORD

REAL ESTATE & PROPERTY MANAGEMENT GROUP



778-355-0116  
info@theaxfords.com  
www.theaxfords.com

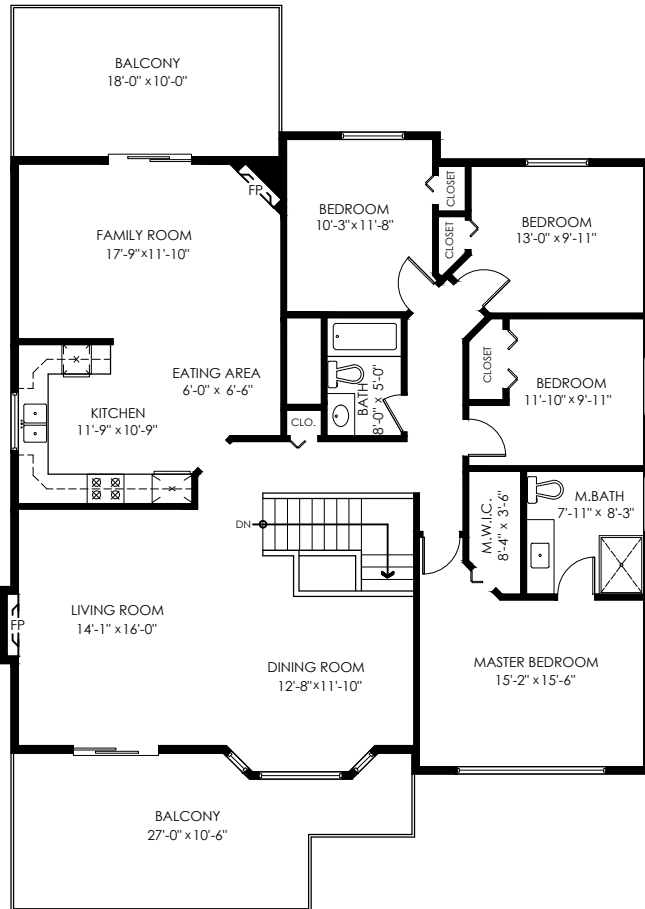
911 Alderson Ave,  
Coquitlam

Main Floor: 1,801 sq.ft.  
Lower Floor: 1,554 sq.ft.  
**Total Livable: 3,355 sq.ft.**

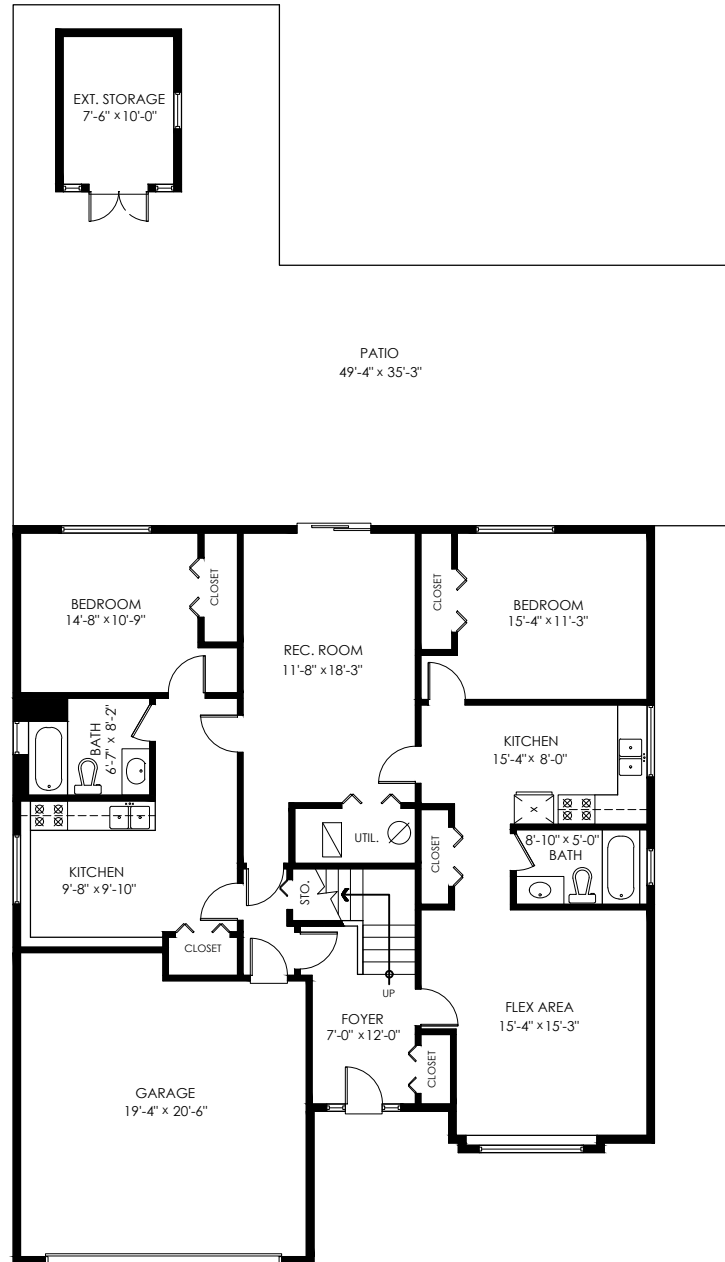
Garage: 404 sq.ft.  
**Grand Total: 3,759 sq.ft.**

Patio: 1,187 sq.ft.  
Ext. Storage: 94 sq.ft.  
Balconies: 414 sq.ft.  
**Total Extras: 1,695 sq.ft.**

Ceiling Height: 7'-11"



**Main Floor Plan**  
Floor Area: 1801 sq.ft.



**Lower Floor Plan**  
Floor Area: 1554 sq.ft.



E&O Insured. Total square foot calculated to gross unit area. SQFT based on interior measurements to exterior walls, not taken from original blueprints, may include unfinished area. This is for marketing purposes only and is not intended for architectural/construction use. All details, sizes & placements should be considered approximate within +/- 2% tolerance.

MEASURED ON: (2022-04-03)  
info@pixlworks.com www.pixlworks.com 604.329.5788

