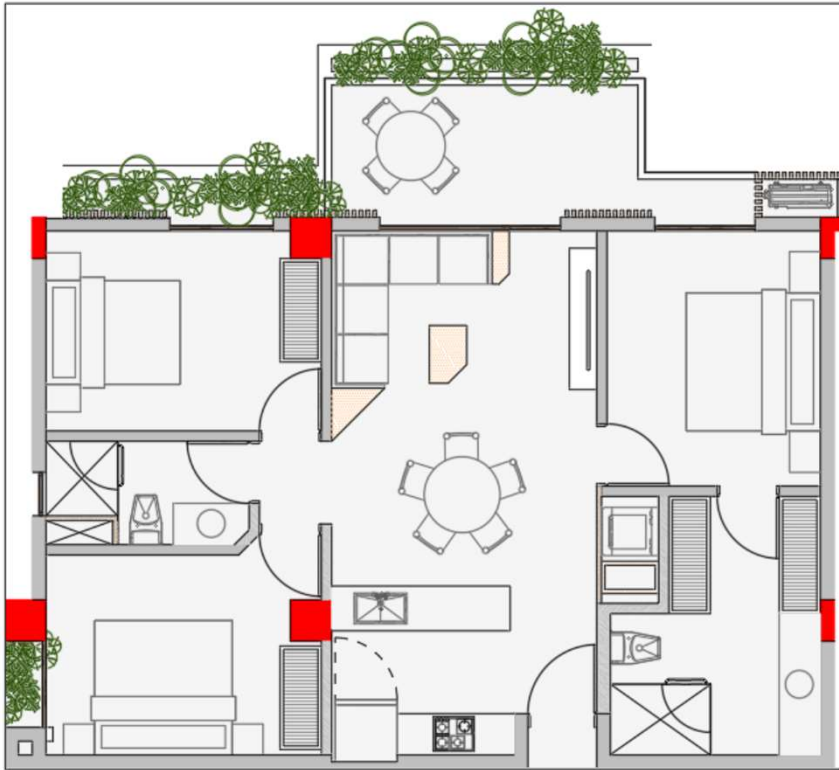


Annex A



Mezzanine 3 Tower 4

- Bedrooms: 3
- Bathrooms 2
- Living / Dining Room
- Kitchen
- Terrace
- **Interior Area:** 88.89 m² / 956.81 sqft
- **Terrace:** 17.94 m² / 193.08 sq ft
- **Total Area:** 106.83 m² / 1,149.90 sq ft


PUNTA LAGUNA
LUXURY APARTMENTS
CORASOL, RIVIERA MAYA



Location

- Tower 4
- Mezzanine 3



• THE PRESENTED IMAGE IS ILLUSTRATIVE, MAY VARY THE FINAL PRODUCT AND CHANGE WITHOUT NOTICE.
RAILING AND DIVISORY TERRACE WALLS MATERIALS MAY VARY IN ACCORDANCE TO THE NEEDS OF FACADES PROJECT



CORASOL