



1406 McNair Drive, North Vancouver, B.C.

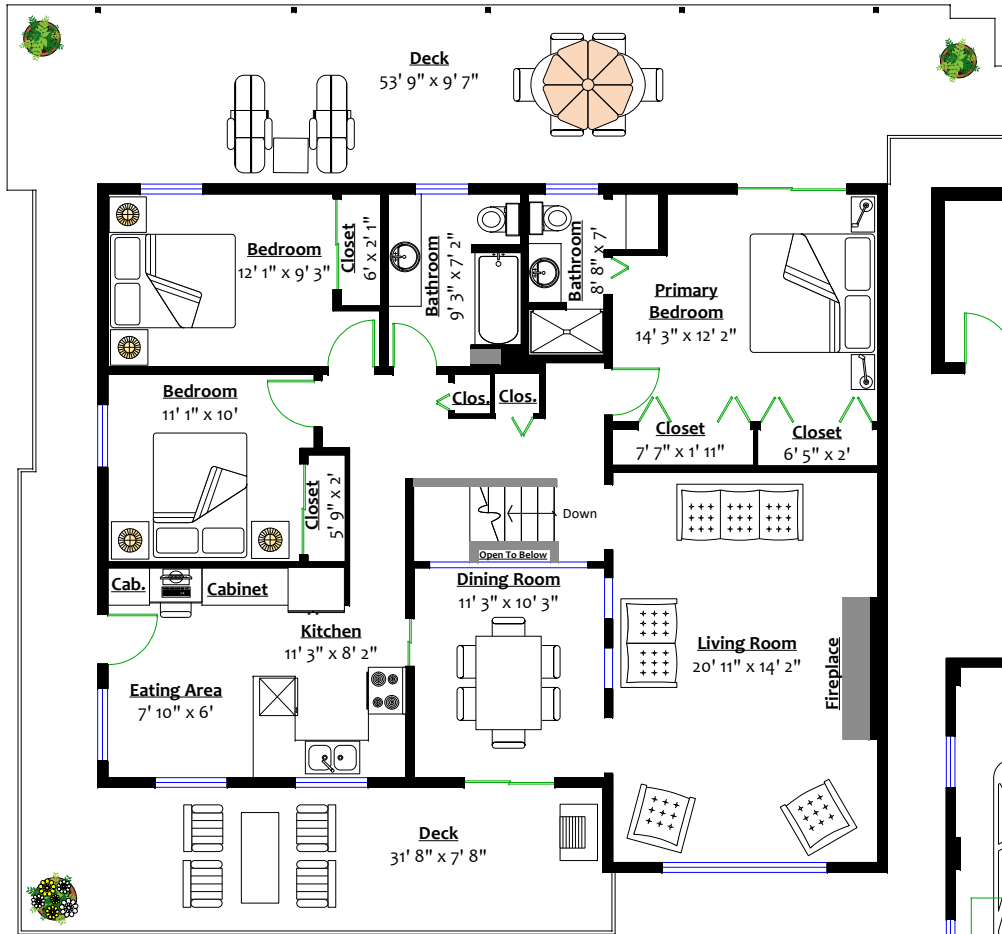
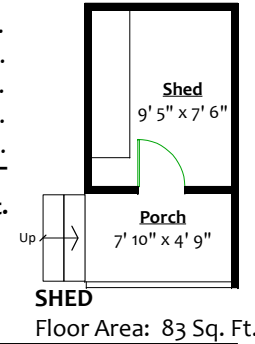
Totals**

Main Level:	1,429 sq. ft.	Porch:	44 sq. ft.
Lower Level:	1,167 sq. ft.	Garage:	422 sq. ft.
Total:	2,596 sq. ft.	Main Deck:	855 sq. ft.
		Shed:	83 sq. ft.
		Deck:	41 sq. ft.

Cold Storage: 456 sq. ft.

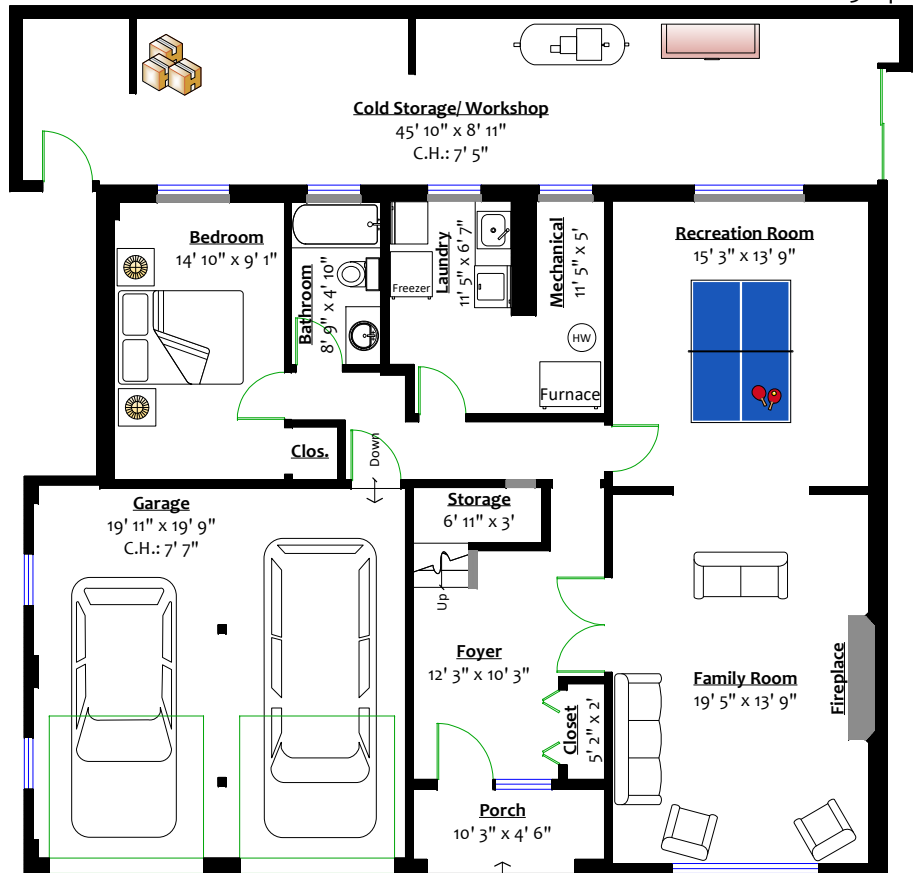
Grand Total: 3,052 sq. ft.

Total: 1,445 sq. ft.



MAIN LEVEL

Floor Area: 1,429 Sq. Ft.
Ceiling Height: 8'



LOWER LEVEL

Floor Area: 1,167 Sq. Ft.
Ceiling Height: 8'

