

FILE: 178300

PLAN AND FIELD NOTES OF  
LOCATION GW279  
TOWNSHIP OF GODSON  
DISTRICT OF KENORA  
G. WEGMAN, O.L.S.  
1985

PLAN 23R-6653

RECEIVED AND DEPOSITED:

MAY 14<sup>th</sup>, 1986

*R. Edmonds*

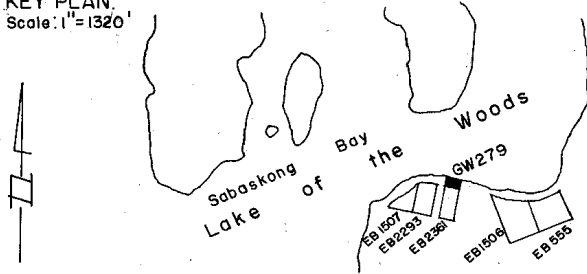
(DATE) LAND REGISTRAR

FOR THE LAND TITLES

DIVISION OF

KENORA

KEY PLAN:  
Scale: 1" = 1320'



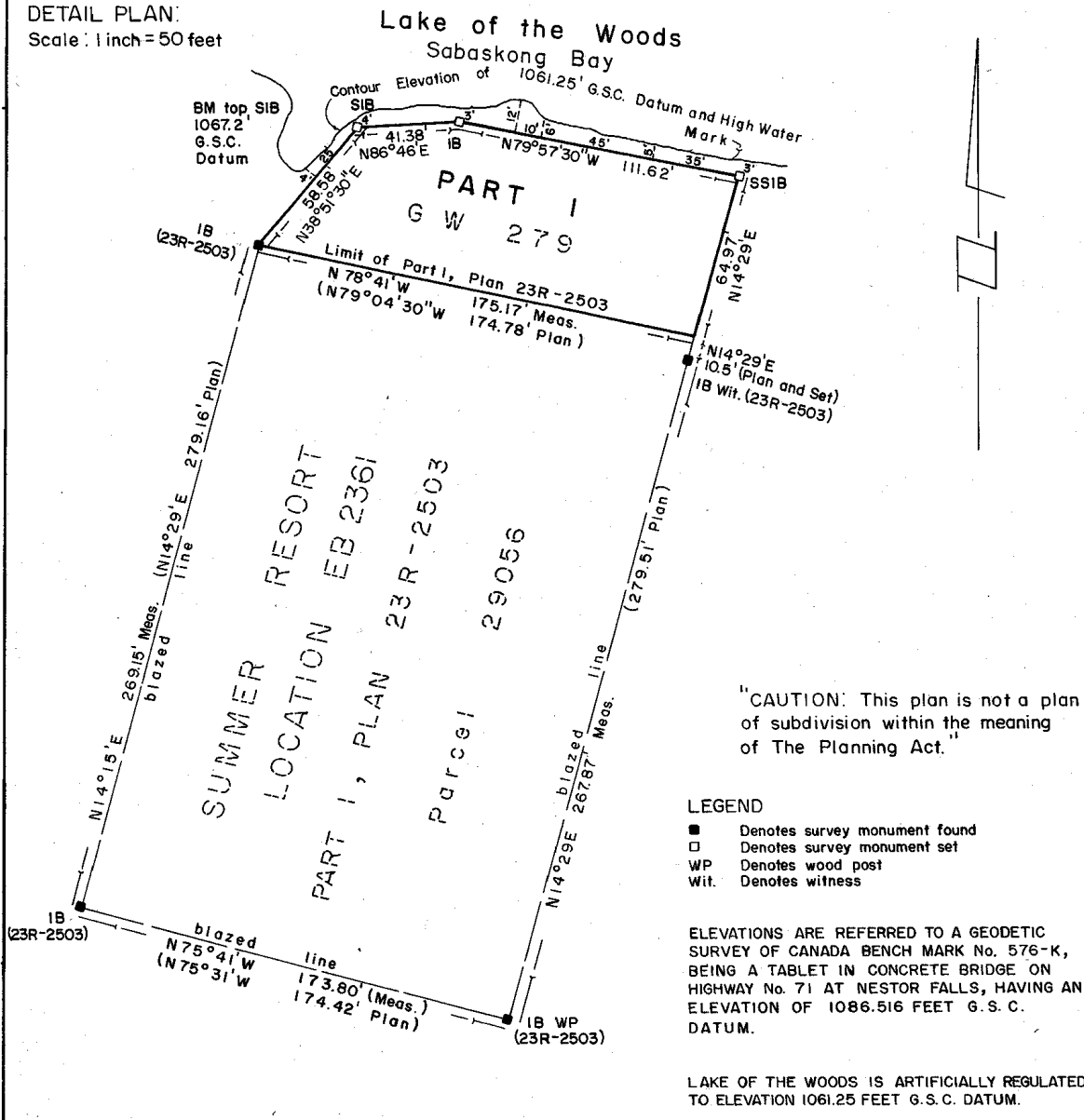
I REQUIRE THIS PLAN TO BE DEPOSITED UNDER THE LAND TITLES ACT.

*S.B. Panting* May 6, 1986  
S.B. PANTING DATE  
SURVEYOR GENERAL  
MINISTRY OF NATURAL RESOURCES

PART I — CROWN

DETAIL PLAN:

Scale: 1 inch = 50 feet



AREA

PART I = 0.22 acres

Bearings are astronomic derived from the easterly limit of PART I, PLAN 23R-2503, having a bearing of N14°29'E.

THE SURVEY REPRESENTED BY THIS PLAN AND FIELD NOTES WAS COMPLETED ON November 5th, 1985.

SURVEYOR'S CERTIFICATE

I HEREBY CERTIFY THAT THIS PLAN AND FIELD NOTES ARE CORRECT AND ARE PREPARED FROM AN ACTUAL SURVEY PERFORMED UNDER MY PERSONAL SUPERVISION, AND THAT I WAS IN MY OWN PROPER PERSON PRESENT ON THE GROUND DURING THE PROGRESS OF SUCH SURVEY.

EMO, ONTARIO  
NOVEMBER 18th, 1985.

*George Wegman*  
GEORGE WEGMAN  
ONTARIO LAND SURVEYOR