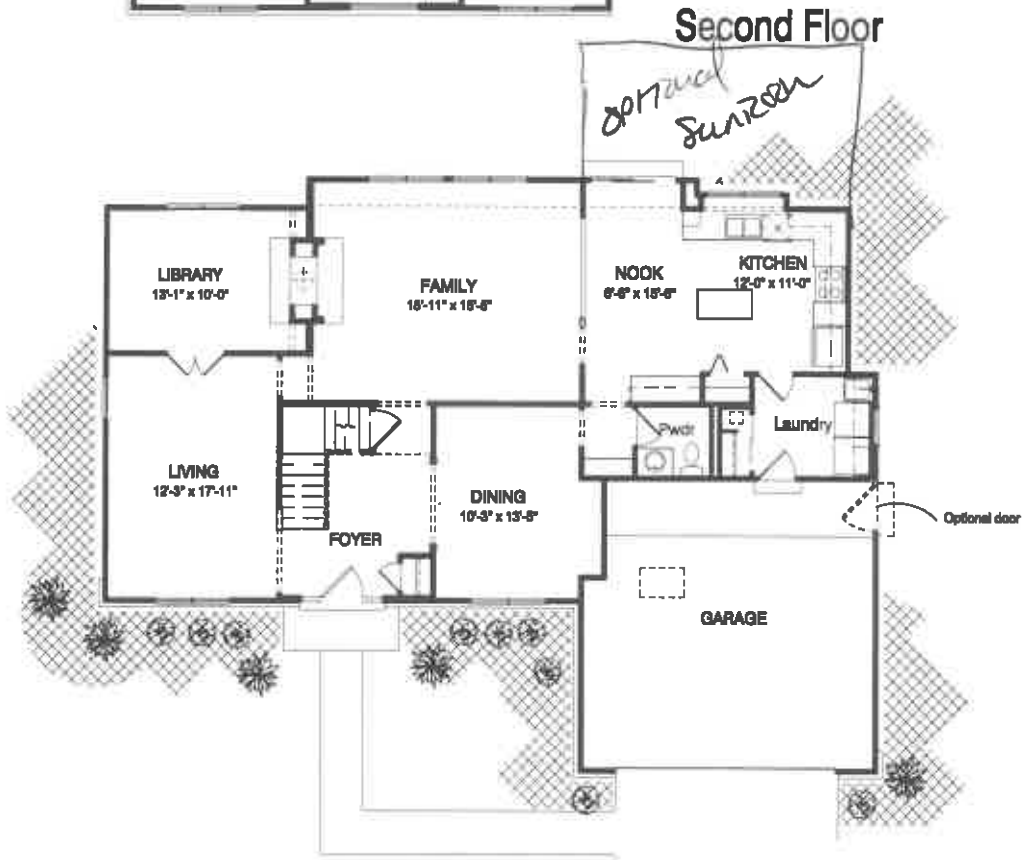
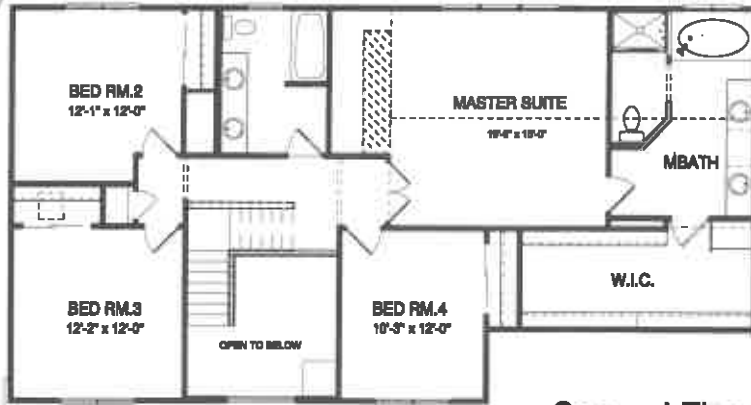


Windsor

Handwritten notes:
 Crown Windows
 Maf...
 11/13/01

Handwritten note:
 RN 11/13/01



First Floor



NOTE: Illustrations and dimensions are approximate. Floor plans and options will vary from Community to Community and may not reflect current changes. Landscaping is Artist rendition - see Sales Consultant for Master Landscape plan.

Windsor

*Community
11-23-04*

FR 11/13/04



Elevation 1



Elevation 3



Elevation 6



Elevation 9



Elevation 10



Elevation 15



NOTE: Illustrations and dimensions are approximate. Floor plans and options will vary from Community to Community and may not reflect current changes. Landscaping is Artist rendition - see Sales Consultant for Master Landscape plan.

WOODGATE FARMS
Included Standard Features

SD 11/3/04

EXTERIOR FEATURES

- Award winning architectural elevations
- Luxurious brick fronts available
- Maintenance free Alcoa vinyl siding in a wide array of colors
- Maintenance free aluminum soffits, fascia, gutters, and downspouts
- Insulated steel entry doors with full weather-stripping and dead bolts
- Durable 25-year limited warranty asphalt roof shingles
- Two frost-free water spigots
- Curved 3-foot concrete walkway from driveway to front porch
- Concrete driveway from street to garage entryway
- Dual glazed WeatherShield Visions 2000 Maintenance-Free windows
- Two GFI electrical outlets on exterior of home
- Screens on all operational windows and sliding glass doors
- Elegant exterior carriage lights on home per elevation
- Garage completely drywalled and fire-taped (no texture or paint)
- Stone address markers per elevation
- Elegant electric yard lamp in front of Home
- Steel roll-up garage door with rubber sweep & seal

STRUCTURAL FEATURES

- Superior 10-Year Limited Structural Warranty "Pulte Protection Plan"
- Structurally engineered poured foundations with exterior drains
- Continuous interior and exterior footer drains
- Steel "I-Beams" for engineered structural support
- Structurally engineered floor system
- 3/4" tongue & groove floor decking system installed, screwed & glued

ENERGY FEATURES

- "Energy Star" program standard
- Full house wrap covering on all living quarters to reduce air infiltration
- 90+ high efficiency furnace by Lennox
- Programmable Thermostat
- Insulated 50-gallon gas hot water heater
- 220 volt outlet for dryer
- R-5 exterior foundation insulation and drainage board
- R-13 fiberglass batt insulation on all exterior walls
- R-19 fiberglass in all cantilevers and bay windows
- R-30 fiberglass in all heated ceiling areas
- Continuous ridge vent and soffit vent providing maximum attic air flow
- Two-stage energy seal process to increase comfort and decrease energy costs

INTERIOR FEATURES

- Extra deep full basements
- Elegant 3/4" solid hardwood foyer in a wide array of colors
- Moen faucets
- Stain protected wall to wall carpeting with high density rebond padding
- Fireplace with custom mantel complete with brick
- Armstrong "No-Wax" vinyl flooring in kitchen, utility room and baths
- Merrillat kitchen cabinets in a variety of styles and colors (per plan)
- Smoke detectors on all levels
- Two-tone paint to accent trim, doors and casings (white walls/bone trim)
- Elegant brass door knobs (chrome inside bathrooms to match fixtures)
- Wilson Art laminate countertops in your choice of colors
- Four panel French Provincial interior doors
- Full size plate glass mirrors in all bathrooms
- Complete pre-selected custom lighting package
- General Electric gas range
- General Electric dishwasher
- Central air conditioning
- One piece fiberglass tub and shower enclosure in main bath
- Tempered glass shower door in master bath (per plan)
- Cultured marble tub in master bath (per plan)
- 1/2 hp. Insinkerator garbage disposal
- Elegant textured and painted ceilings
- Augmented flow "anti-scalding" shower controls
- Spacious walk-in closet with wire shelving in owner's suite
- Laundry cabinets per plan
- Leviton Category 5 structured wiring telephone jacks in kitchen, owner's suite, grand room and library (if applicable)
- RG-6 structured cable television outlets in kitchen, owner's suite and grand room



Estates

October 2001