

5467 Monte Bre Crescent,
West Vancouver, B.C.

Main Floor: 1,675 sq.ft.
Upper Floor: 1,022 sq.ft.
Fin. Lower Floor: 804 sq.ft.

Total: 3,501 sq.ft.

Unfin. Lower Floor: 522 sq.ft.

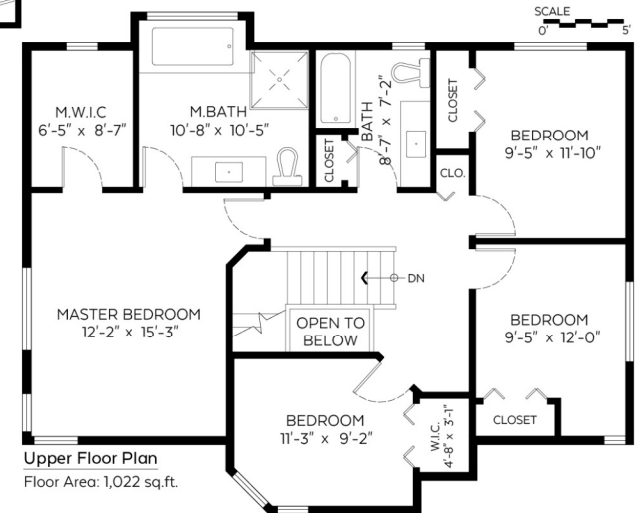
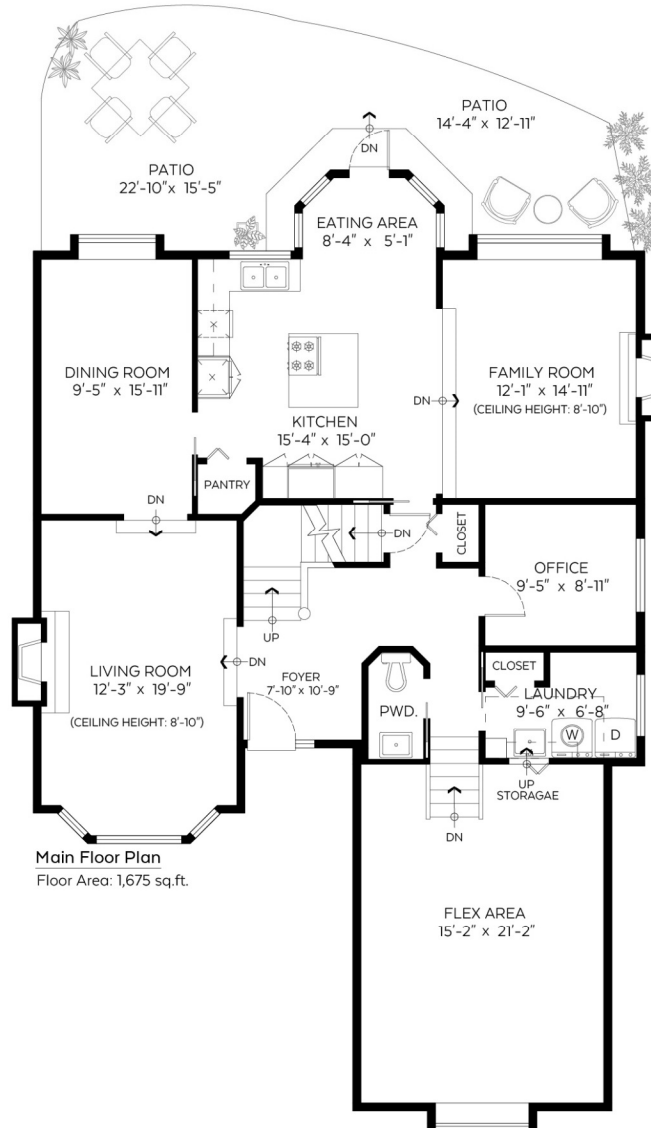
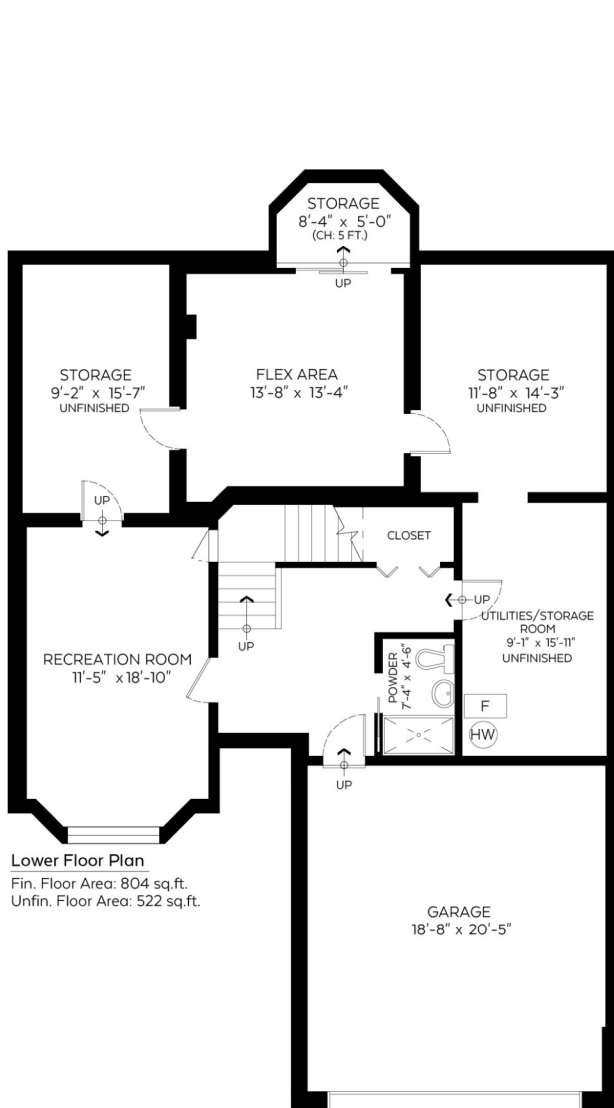
Grand Total: 4,023 sq.ft.

Open To Below: 14 sq.ft.

Auxiliary Area

Garage: 444 sq.ft.

Patio: 414 sq.ft.



Measured on: July 28, 2020

The floor plan is not suitable for architectural/construction and is covered under E&O. © Excelsior Measuring Inc. 2019. All rights reserved for Excelsior Measuring Inc. Users shall not publish and distribute such material (in whole or in part) and/or incorporate it in other works in any form.



Booked on
the Plixlink App™

