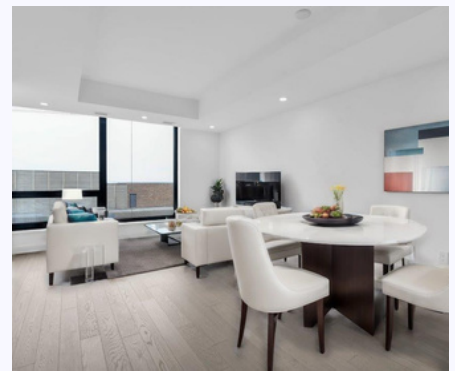




Liisa Vexler
REALTOR®

Be The First to Live Here
Downtown Condo for Sale



MODERN URBAN LIVING

Fresh. Modern. Urban. This brand new 2-bedroom, 2-bathroom condo is the ideal spot for your metropolitan lifestyle in Ottawa. Just steps from the business hub yet seamlessly connected to the entire city, the Claridge Moon is the first residential building directly linked to the Light Rail Transit (LRT) system. At your doorstep, is a connection to business, shopping, dining, entertainment, and more.

Welcome home!

1501-340 QUEEN STREET CENTRETOWN

- ✓ 2 Bedrooms
- ✓ 2 Bathrooms (1 ensuite)
- ✓ In-suite laundry
- ✓ 1 Parking
- ✓ 1 Locker

LOCATION

Situated in the heart of Ottawa's downtown, Claridge Moon is right above the LRT station, very close to Parliament Hill, the Ottawa River & Gatineau

LiisaVexler.com



THE BUILDING FEATURES & AMENITIES

The quality of the finishings within the unit and throughout the building are second to none. They include 9-foot ceilings, hardwood floors, and expansive windows. The open-concept kitchen, dining, and living areas seamlessly flow out onto the long balcony overlooking the river.

Building amenities include:

- Concierge
- Entertainment lounge
- Rooftop terrace
- Screening/theatre room
- Fitness centre
- Guest suites
- Business centre

INCLUSIONS

- ✓ Cooktop, oven
- ✓ Microwave/rangehood
- ✓ Washer, dryer
- ✓ Fridge, dishwasher
- ✓ Window blinds

IS THIS YOUR NEXT HAPPY PLACE?

📞 613-898-1184

✉️ Liisa@LiisaVexler.com

The information contained herein has been obtained through sources deemed reliable, but cannot be guaranteed for its accuracy. We recommend to the buyer that any information, which is of special interest, should be obtained through independent verification.