

The
**TRAILSIDE
TOWNS**

waterloo - unit G068

MOVE-IN-READY



4



3.5



2

\$841,298



68-271 Grey Silo Road

Rear-Garage
Condo Townhome

1836 SQ.FT.

DESCRIPTION

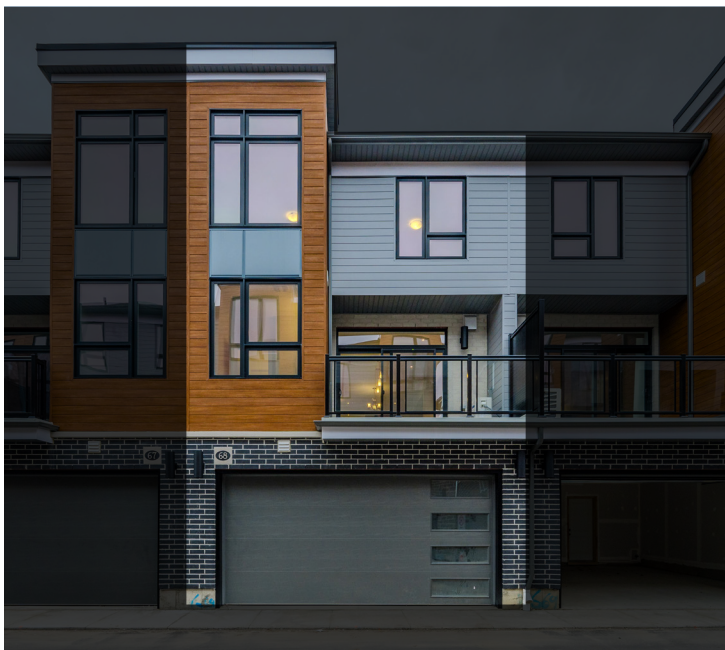
Prepare to be wowed in the Sandalwood, a 1836 sq. ft. condo townhome. This home includes a ground-floor bedroom with a private three-piece bathroom. Upstairs, you will be welcomed to an open-concept living space with balcony access in the front and back of the home. The third floor welcomes you to 3 bedrooms and 2 bathrooms, plus an upstairs laundry room.

FULL DETAILS

- 9' ceilings on ground + second floor
- Laminate flooring in kitchen/dinette, great room and bedroom 4
- Quartz countertops in kitchen, main bathroom, ensuite and bathroom 2
- Backsplash, deep fridge cabinet, waterline, two-toned cabinetry, pot & pan drawers, and LED undercabinet lighting in kitchen
- Added lower cabinets with quartz countertop in dinette
- Potlights in kitchen and great room
- ENERGY STAR® certified exterior black frame, triple pane windows
- Duradeck aluminum + glass railing
- Premium garage door
- Under-slab insulation
- Energy recovery ventilator for proper home ventilation

SANDALWOOD
floorplan

FRONT VIEW, INTERIOR



REAR VIEW, INTERIOR

ACTIVA

SEE INTERIOR FINISHES >

**UNIT 68-271
GREY SILO RD.**

INTERIOR FEATURES AND FINISHES



KITCHEN



PRINCIPAL ENSUITE



MAIN BATH



BALCONY GARAGE SIDE



DINETTE + GREAT ROOM

Julie Schmidt, Sales Representative
Coldwell Banker Peter Benninger Realty

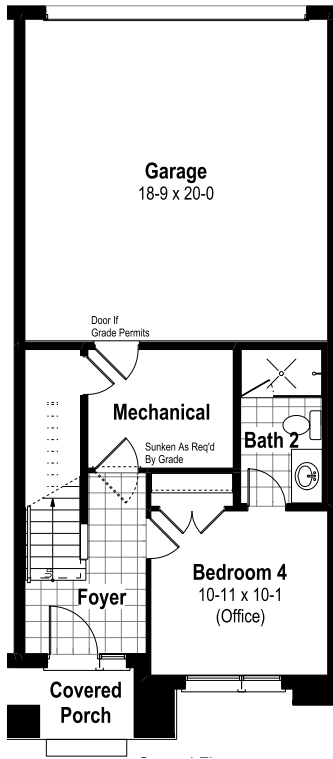
Kim Louie, Sales Representative
Coldwell Banker Peter Benninger Realty

CONTACT info@activa.ca
519-968-3689

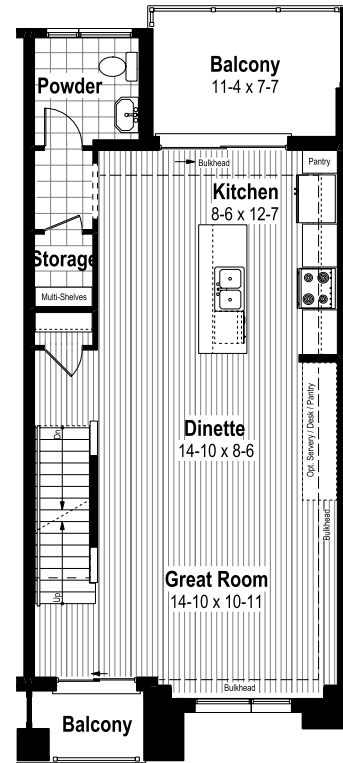


Colours and materials may vary with actual samples and subject to change without notice. E. & O. E. MAY 2, 2024

ground floor



second floor



third floor

