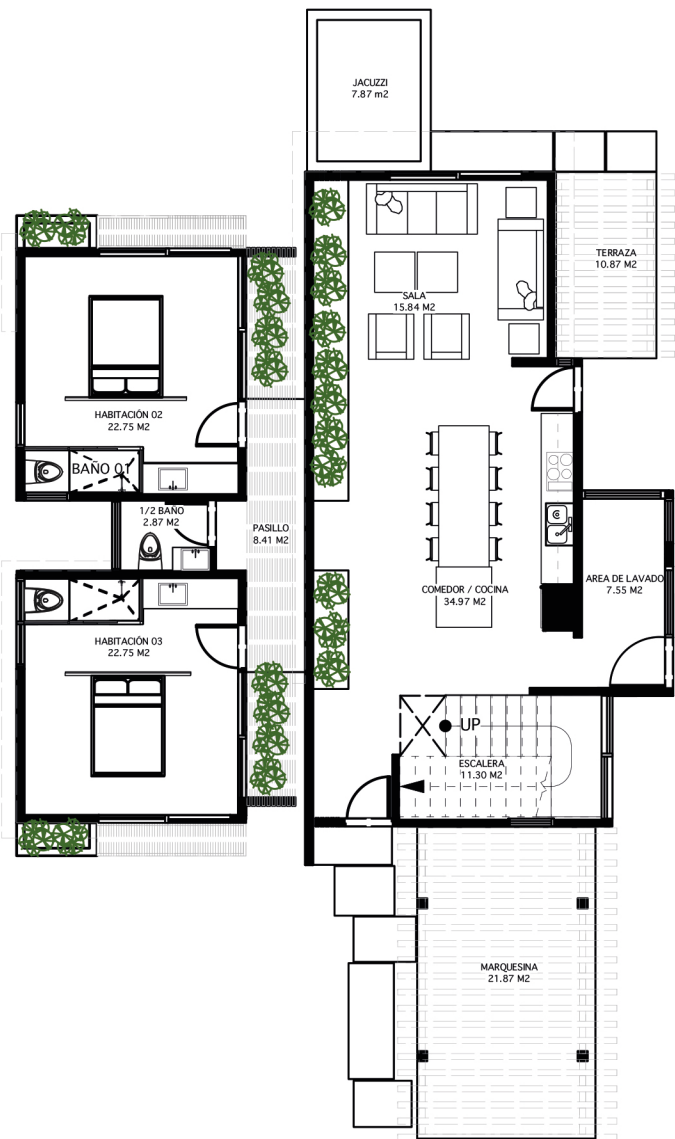


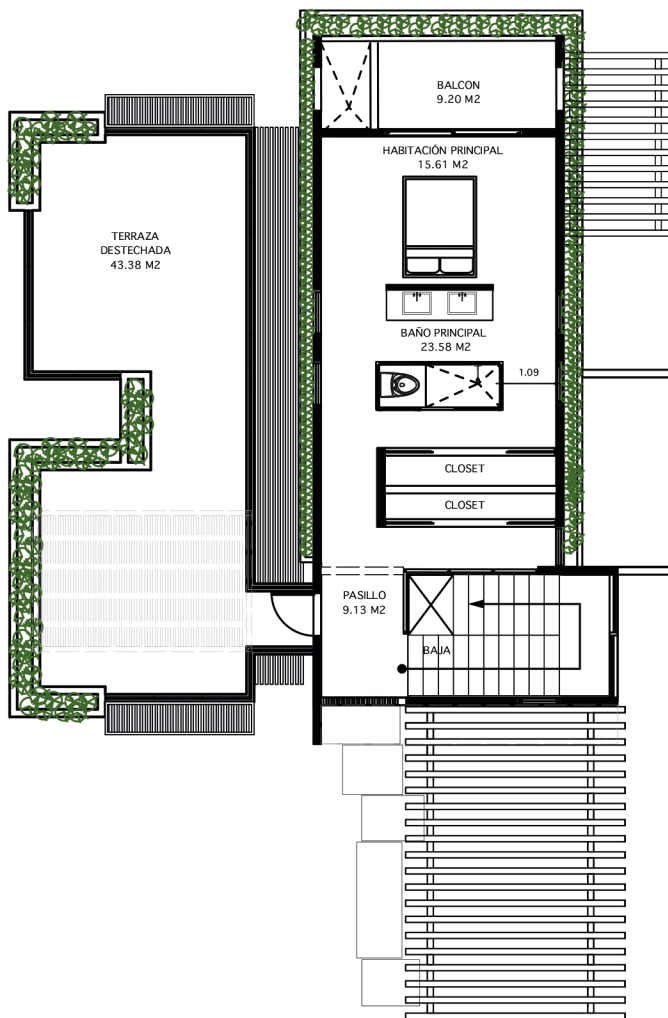
# PROJET ALIZÉS VILLAGE

VILLA ASTREOS : 3 CH.



PLAN ARCHITECTURAL RDC

ÉCHELLE 1:125



PLAN ARCHITECTURAL ETAGE 1

ÉCHELLE 1:125

RDC	
SALON	15.84 M2
CUISINE/ S. À MANGER	34.97 M2
BUANDERIE	07.55 M2
TERRACE	10.87 M2
JACUZZI	07.87 M2
WC	02.87 M2
CHAMBRE 02 + S.D'EAU 2	22.75 M2
CHAMBRE 03 + S.D'EAU 3	22.75 M2
COULOIR	08.41 M2
ESCALIER	11.30 M2
PARKING	21.87 M2
<b>TOTAL RDC</b>	<b>167.05 M2</b>

ÉTAGE 1	
CHAMBRE PRINCIPALE	15.61 M2
SALLE D'EAU + DRESSING	23.58 M2
COULOIR	09.13 M2
BALCON	09.20 M2
TERRACE/ SOLARIUM	43.38 M2
<b>TOTAL ÉTAGE 1</b>	<b>100.90 M2</b>

<b>TOTAL VILLA ASTREOS</b>	<b>267.95 M2</b>
----------------------------	------------------