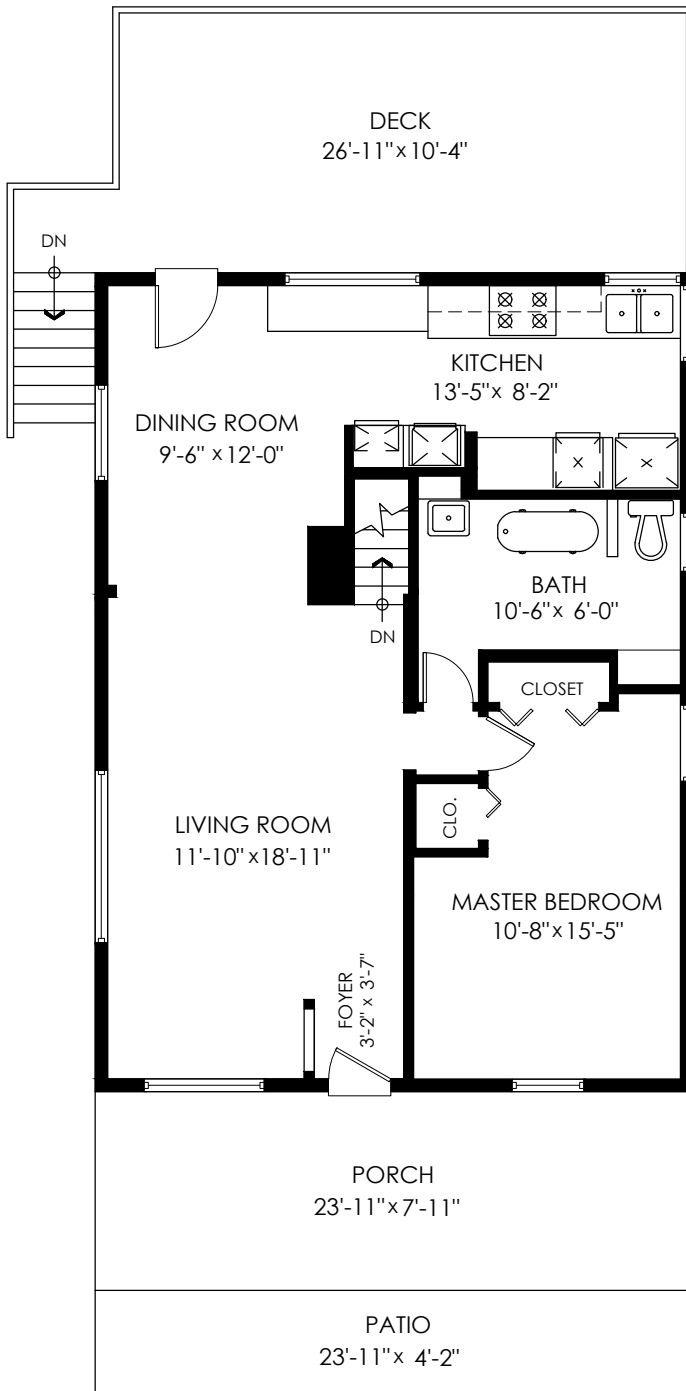


1371 Borthwick Rd, North Vancouver

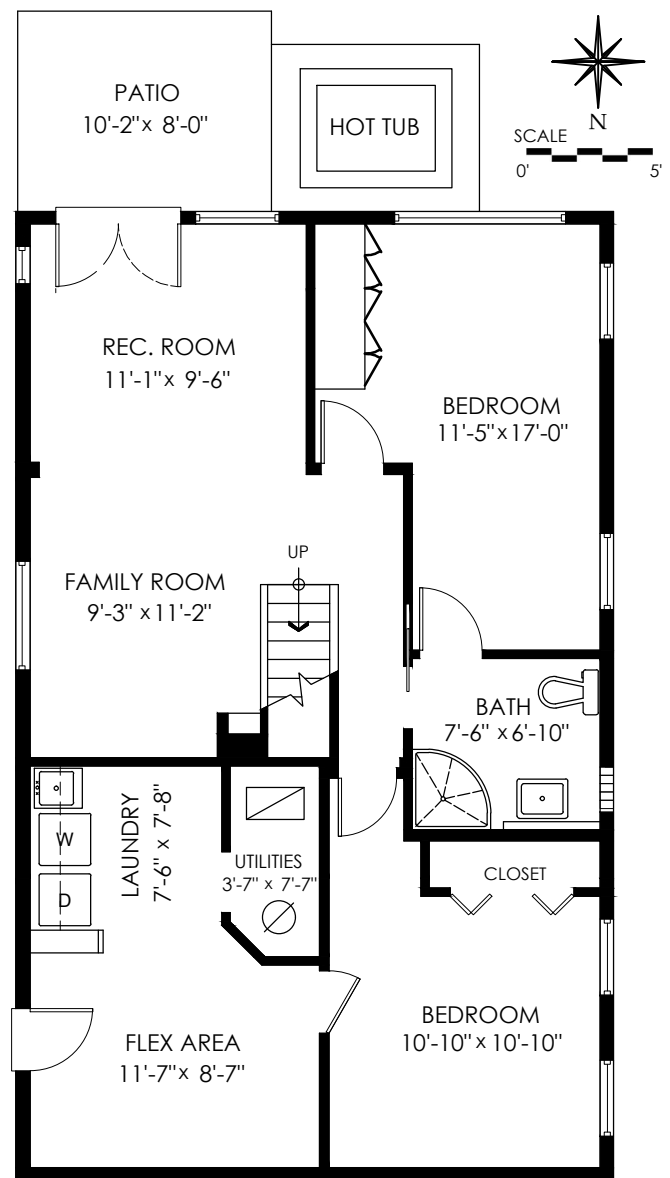
Main Floor: 783 sq.ft.
Lower Floor: 927 sq.ft.
Total: 1,710 sq.ft.

Deck: 250 sq.ft.
Patios: 181 sq.ft.
Porch: 190 sq.ft.
Total Extras: 621 sq.ft.



Main Floor Plan

Floor Area: 783 sq.ft.
Ceiling Height: 7'-7"



Lower Floor Plan

Floor Area: 927 sq.ft.
Ceiling Height: 7'