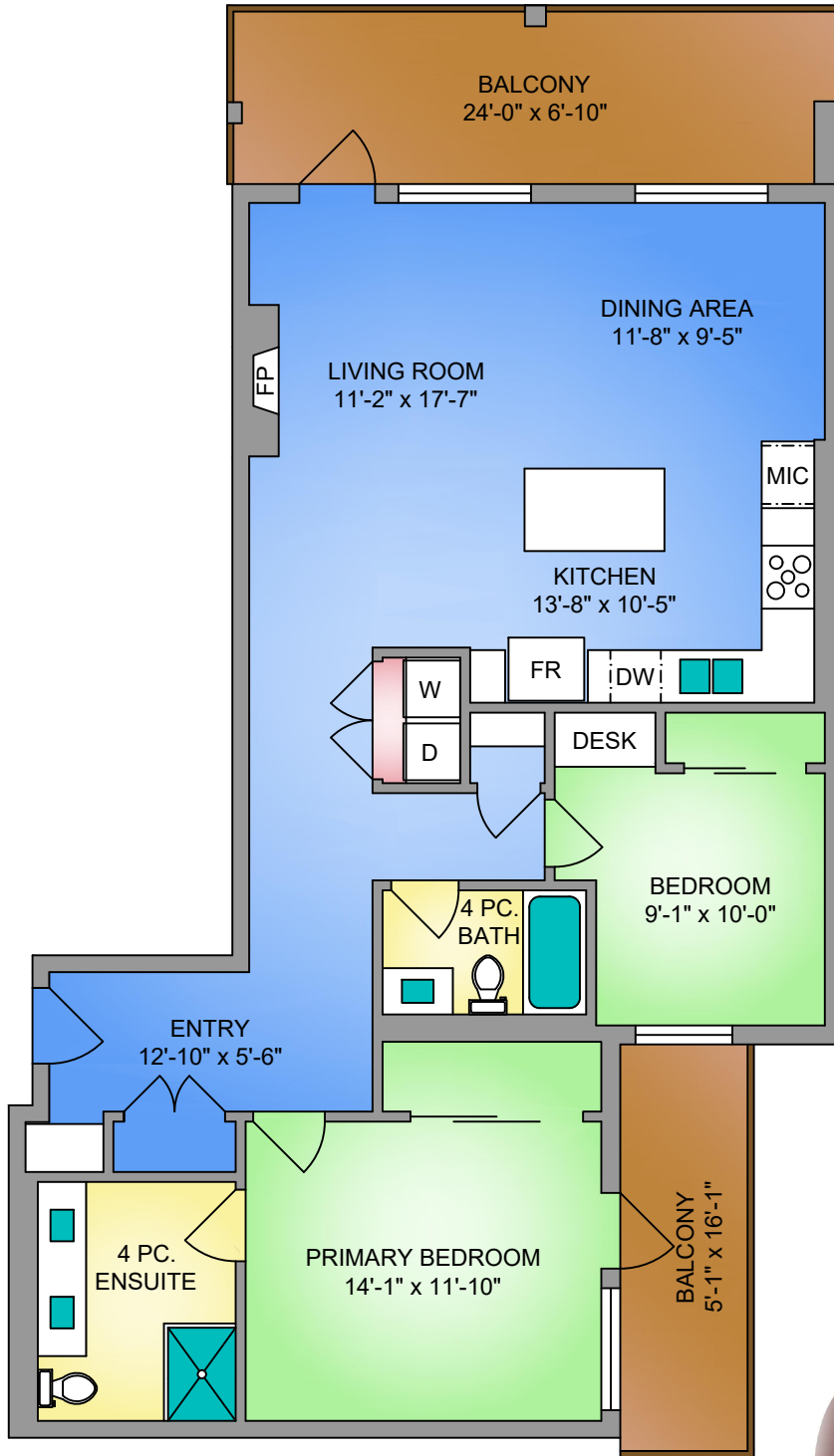
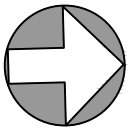


UNIT 306 - 9818 FOURTH STREET
1200 SQ. FT.
9'-0" CEILING HEIGHT



NORTH



0' 3' 6'
SCALE



250-884-9753
 matt@propermeasure.com
 www.propermeasure.com

UNIT 306 -9818 FOURTH STREET		
SEPTEMBER 26, 2024		
PREPARED FOR THE EXCLUSIVE USE OF PATRICK SCHORLE PLANS MAY NOT BE 100% ACCURATE, IF CRITICAL BUYER TO VERIFY.		
FLOOR	AREA (SQ. FT.)	
	FINISHED	BALCONY
THIRD	1200	241