

KRYSTIAN THOMAS  
*real estate adviser*

# 1204-2055 PENDRELL ST VANCOUVER

VIEWS OF ENGLISH BAY

## PROPERTY FEATURES

Fully updated suite.

Spa-like bathroom w/ heated floors.

 1  
Bedrooms

 1  
Bathrooms

 720  
Sq. Ft.

[krystianthomas.com](http://krystianthomas.com)

604.341.9927

[info@krystianthomas.com](mailto:info@krystianthomas.com)



OAKWYN REALTY



# 1204-2055 PENDRELL ST



## FEATURES & SPECIFICATIONS

Type of Home: \_\_\_\_\_  
Equity Co-op

Year Built: \_\_\_\_\_  
1965

Indoor Living: \_\_\_\_\_  
720 sqft. indoor

Bedrooms: \_\_\_\_\_  
1

Bathrooms: \_\_\_\_\_  
1

Parking & Storage: \_\_\_\_\_  
1 Parking (\$25-\$35/mo.)  
1 Storage

Maintenance Fee: \_\_\_\_\_  
\$652

Property Taxes: \_\_\_\_\_  
Inclu. in Maint. Fees

Restrictions: \_\_\_\_\_  
1 Cat / Kids Allowed  
No Rentals

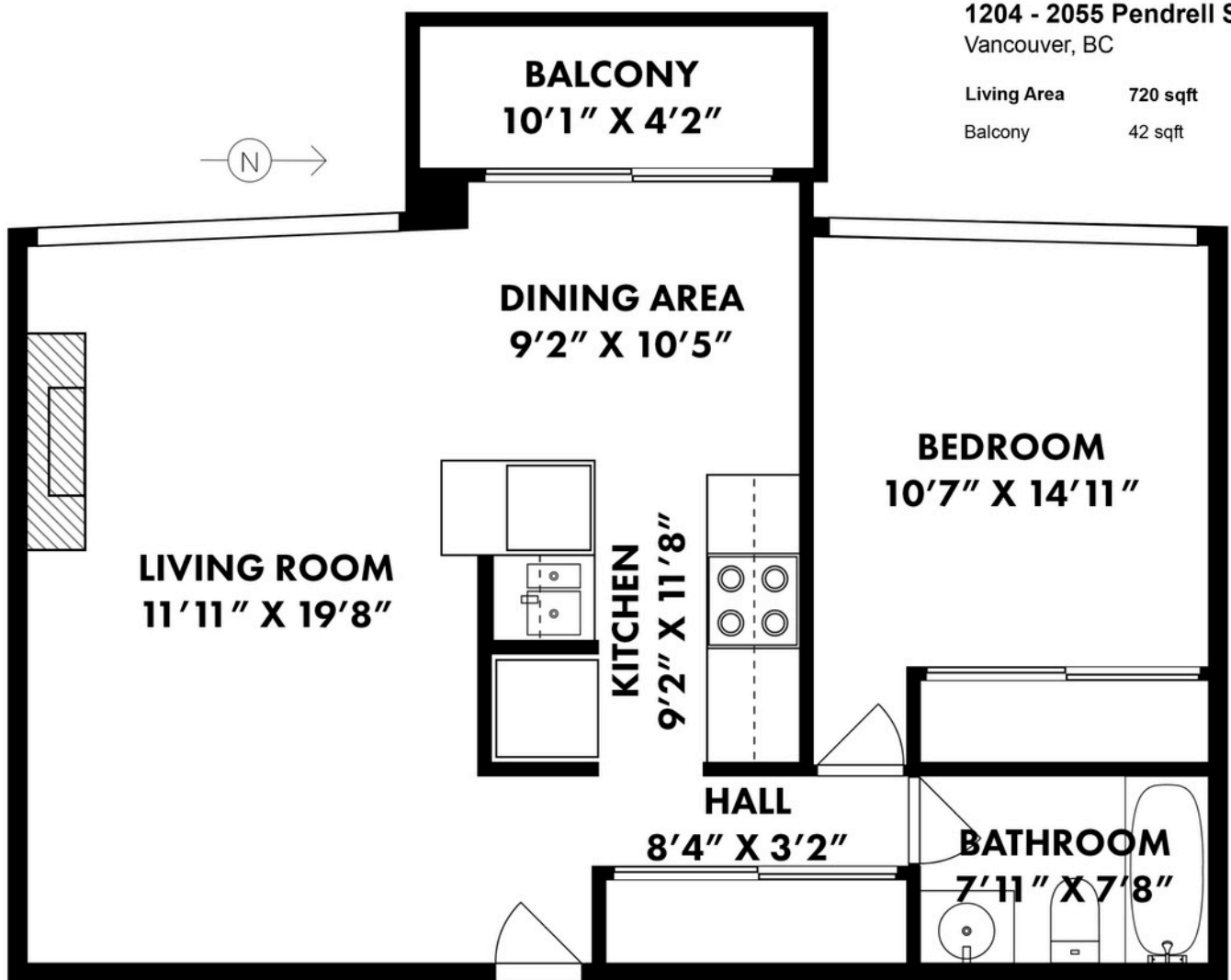
Welcome to Panorama Place! Enjoy the West End lifestyle in a concrete building located on a quiet cul-de-sac on the edge of Stanley Park and just a half-block to English Bay. This peaceful 1 bed/1 bath features unobstructed views of English Bay, and the park, and welcomes house-sized furniture. Large picturesque west-facing double-glazed windows. This fully updated suite features hardwood flooring, double-glazed windows, and high-end appliances. SPA-like bathroom with heated floors. Cozy balcony for sunset martinis. Just an elevator ride to the Park, tennis, bike trails & the Seawall. Shops, cafes & grocers are all walkable. No dogs or rentals. Indoor pool, common roof deck. 1 Storage. Parking \$25/\$35.

All information contained here within is to be verified by the Buyer if deemed important.









**1204 - 2055 Pendrell Street**  
Vancouver, BC

Living Area      720 sqft  
Balcony            42 sqft

Floor plan is not suitable for architectural/construction purposes.  
Sizes and dimensions are approximate, buyer to verify.



Oakwyn Realty Ltd.  
400-1286 Homer Street  
Vancouver, BC, V6B 2Y5  
oakwyn.com

krystianthomas.com  
604.341.9927  
info@krystianthomas.com

