



KRYSTIAN THOMAS
real estate adviser



1204-2055 PENDRELL ST
VANCOUVER

ENGLISH BAY VIEWS

PROPERTY FEATURES

Fully updated suite.

Spa-like bathroom w/ heated floors.



1

Bedrooms



1

Bathrooms



720

Sq. Ft.

krystianthomas.com

604.341.9927

info@krystianthomas.com



OAKWYN REALTY

1204-2055 PENDRELL ST



FEATURES & SPECIFICATIONS

Type of Home:
Equity Co-op

Year Built:
1965

Indoor Living:
720 sqft. indoor

Bedrooms:
1

Bathrooms:
1

Parking & Storage:
1 Parking (\$35-\$45/mo.)
1 Storage

Maintenance Fee:
\$674

Property Taxes:
Inclu. in Maint. Fees

Restrictions:
1 Cat / Kids Allowed
No Rentals

Welcome to Panorama Place! Enjoy the West End lifestyle in a concrete building located on a quiet cul-de-sac on the edge of Stanley Park and just a half-block to English Bay. This peaceful 1 bed/1 bath features unobstructed views of English Bay, and the park, and welcomes house-sized furniture. Large picturesque west-facing double-glazed windows. This fully updated suite features hardwood flooring, double-glazed windows, and high-end appliances. SPA-like bathroom with heated floors. Cozy balcony for sunset martinis. Just an elevator ride to the Park, tennis, bike trails & the Seawall. Shops, cafes & grocers are all walkable. No dogs or rentals. Indoor pool, common roof deck. 1 Storage. Parking \$35/\$45.

All information contained here within is to be verified by the Buyer if deemed important.



*Digitally staged image



*Digitally staged image



*Digitally staged image



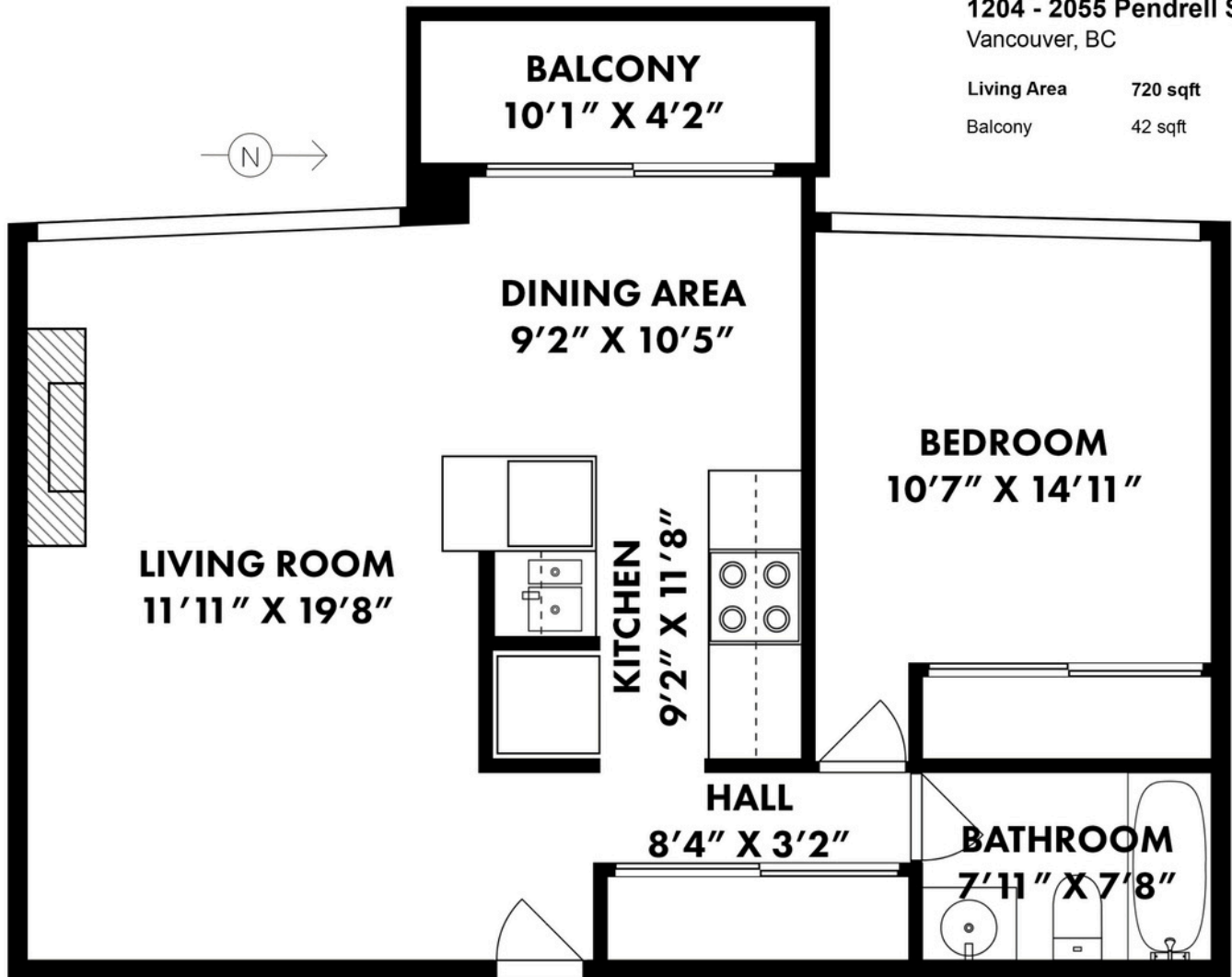
*Digitally staged image



1204 - 2055 Pendrell Street
Vancouver, BC

Living Area 720 sqft

Balcony 42 sqft



Floor plan is not suitable for architectural/construction purposes.
Sizes and dimensions are approximate, buyer to verify.



Oakwyn Realty Ltd.
400-1286 Homer Street
Vancouver, BC, V6B 2Y5
oakwyn.com

krystianthomas.com
604.341.9927
info@krystianthomas.com

