



ANTHONY RIGLIETTI
REALTOR

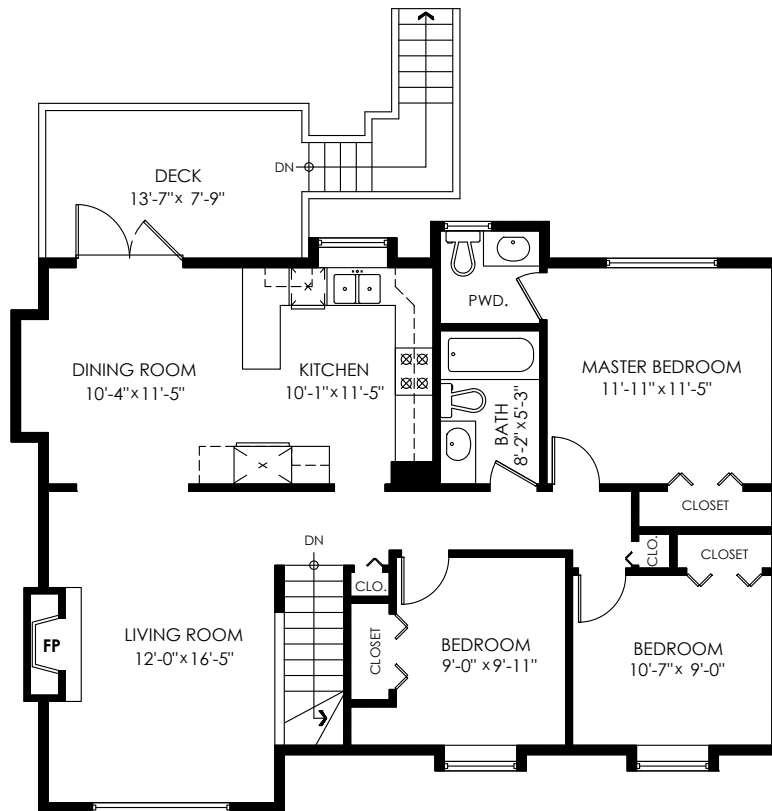
604.813.4686

9468 209B Crescent, Langley

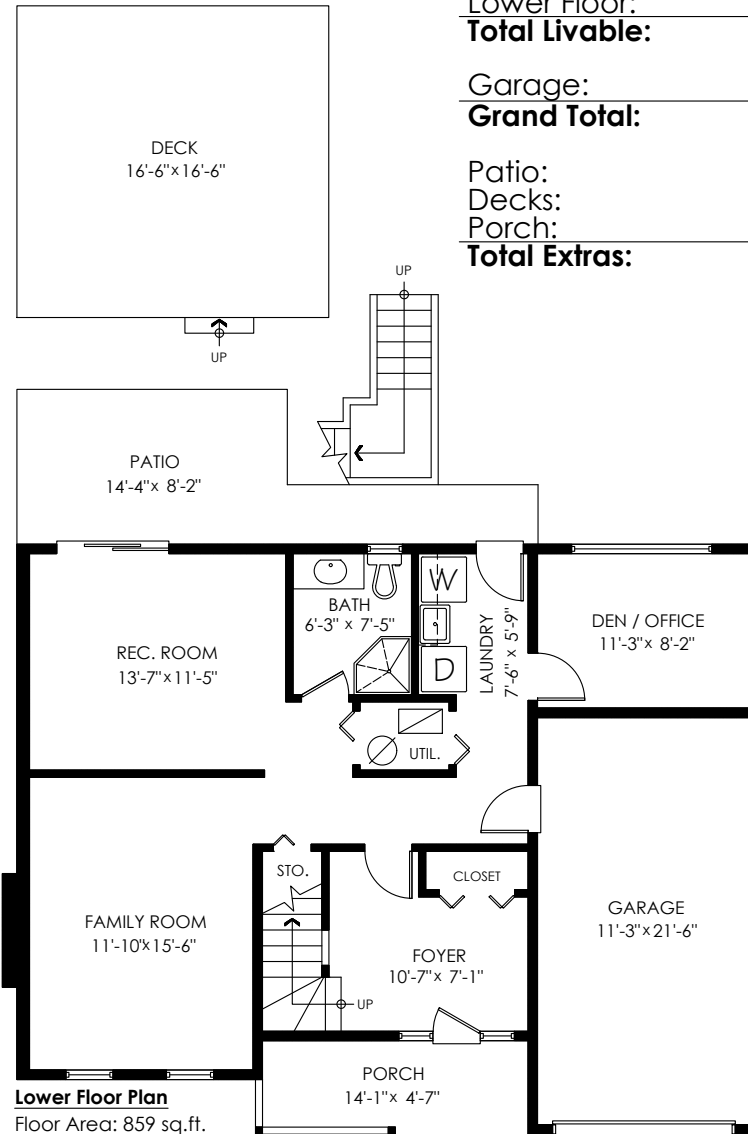
Main Floor:	1,095 sq.ft.
Lower Floor:	859 sq.ft.
Total Livable:	1,954 sq.ft.

Garage:	262 sq.ft.
Grand Total:	2,216 sq.ft.

Patio:	159 sq.ft.
Decks:	378 sq.ft.
Porch:	64 sq.ft.
Total Extras:	601 sq.ft.



Main Floor Plan
Floor Area: 1095 sq.ft.
Ceiling Height: 8'



Lower Floor Plan
Floor Area: 859 sq.ft.
Ceiling Height: 7'-11"



OAKWYN REALTY
DOWNTOWN

SCALE
0' 5'

cotala

E&O Insured. Total square foot calculated to gross unit area. SQFT based on interior measurements to exterior walls, not taken from original blueprints, may include unfinished area. This is for marketing purposes only and is not intended for architectural/construction use. All details, sizes & placements should be considered approximate within +/- 2% tolerance.

MEASURED ON: (2022-01-12)
info@pixlworks.com www.pixlworks.com 604.329.5788

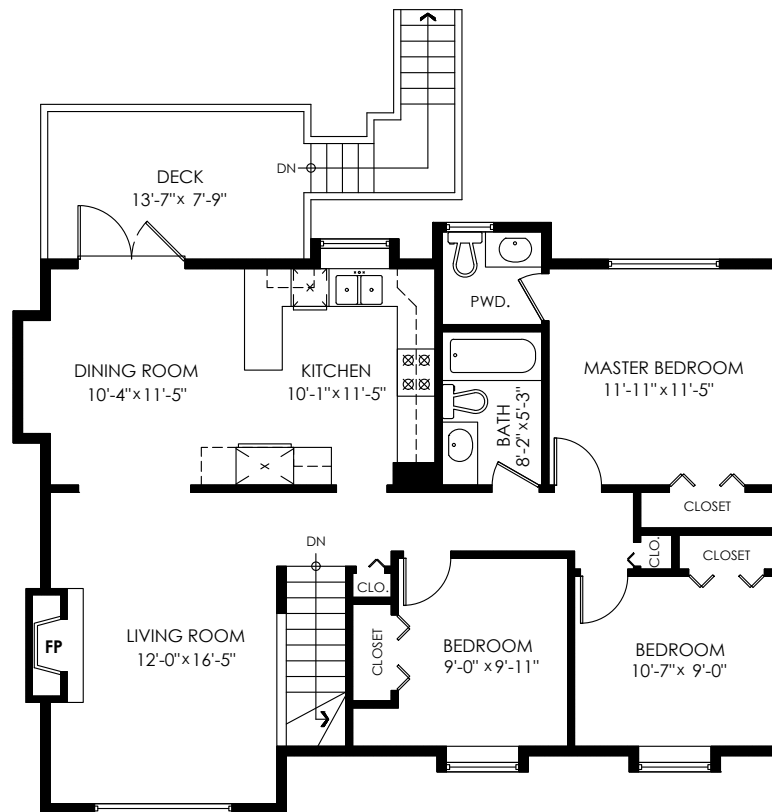


9468 209B Crescent, Langley

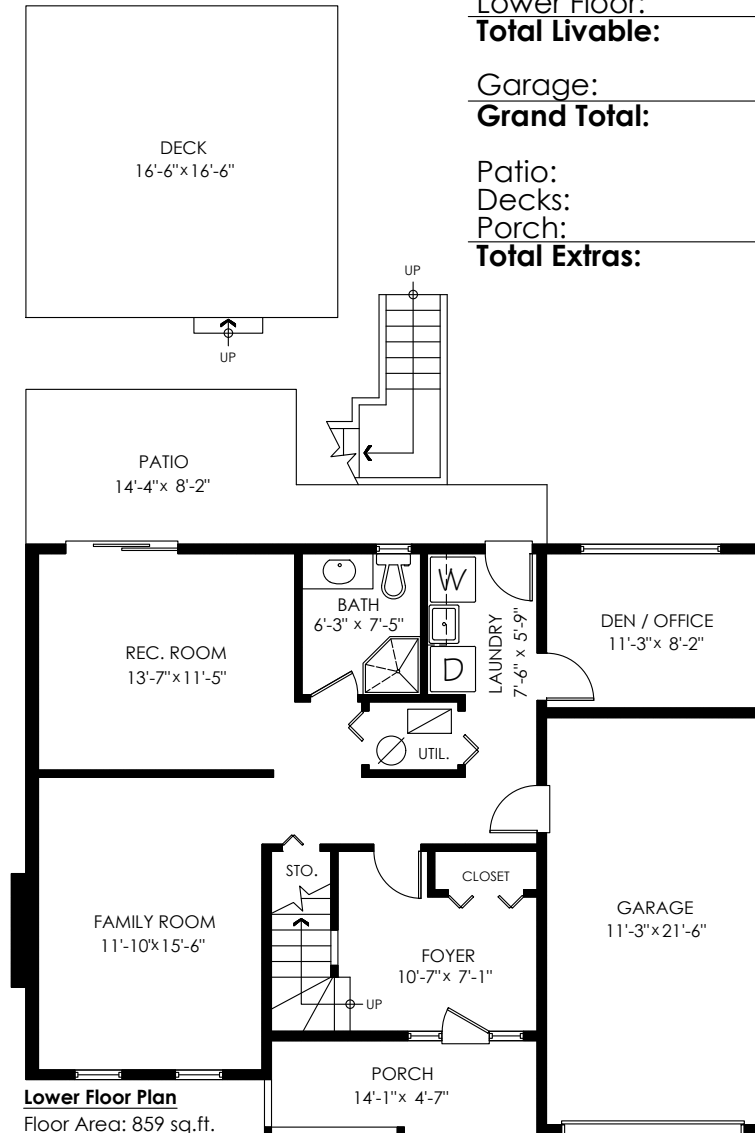
Main Floor: 1,095 sq.ft.
 Lower Floor: 859 sq.ft.
Total Livable: 1,954 sq.ft.

Garage: 262 sq.ft.
Grand Total: 2,216 sq.ft.

Patio: 159 sq.ft.
 Decks: 378 sq.ft.
 Porch: 64 sq.ft.
Total Extras: 601 sq.ft.



Main Floor Plan
 Floor Area: 1095 sq.ft.
 Ceiling Height: 8'



Lower Floor Plan
 Floor Area: 859 sq.ft.
 Ceiling Height: 7'-11"



This is for marketing purposes only and is not intended for architectural/construction use. All details, sizes & placements should be considered approximate within +/- 2% tolerance.

MEASURED ON: (2022-01-12)
 info@pixlworks.com www.pixlworks.com 604.329.5788





Houses:

Total square footage is calculated to the outside of exterior walls.

Room sizes are dimensioned to the inside of the walls. This is because you need to know what you can fit in that room. When you add up the total of the room sizes it will not equal the total square footage of the property. This method of adding up room sizes will not account for wall thickness, interior hallways, exterior wall thickness, closets and many other areas that are included in total sqft.

Any space that is not suitable for year-round use or has a ceiling height of less than 4 feet will not be considered living space. An example of this includes a deck, garage or attic. If there isn't heat, insulation or room for an adult to stand, then it will not be included in the living space.

Cantilevered fireplaces, chimneys and plant windows are also not considered living space.

Included in the living space will be the measurements for stair treads for the floor they service as well as the space under the lowest floor's stairs.

Areas open to the floor below (also known as double height ceilings) are not considered living space because there is no floor.

Main Floor:	1,095 sq.ft.
Lower Floor:	859 sq.ft.
Total Livable:	1,954 sq.ft.

9468 209B Crescent, Langley

Garage:	262 sq.ft.
Grand Total:	2,216 sq.ft.

Patio:	159 sq.ft.
Decks:	378 sq.ft.
Porch:	64 sq.ft.
Total Extras:	601 sq.ft.

