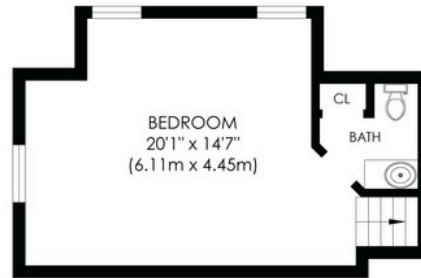
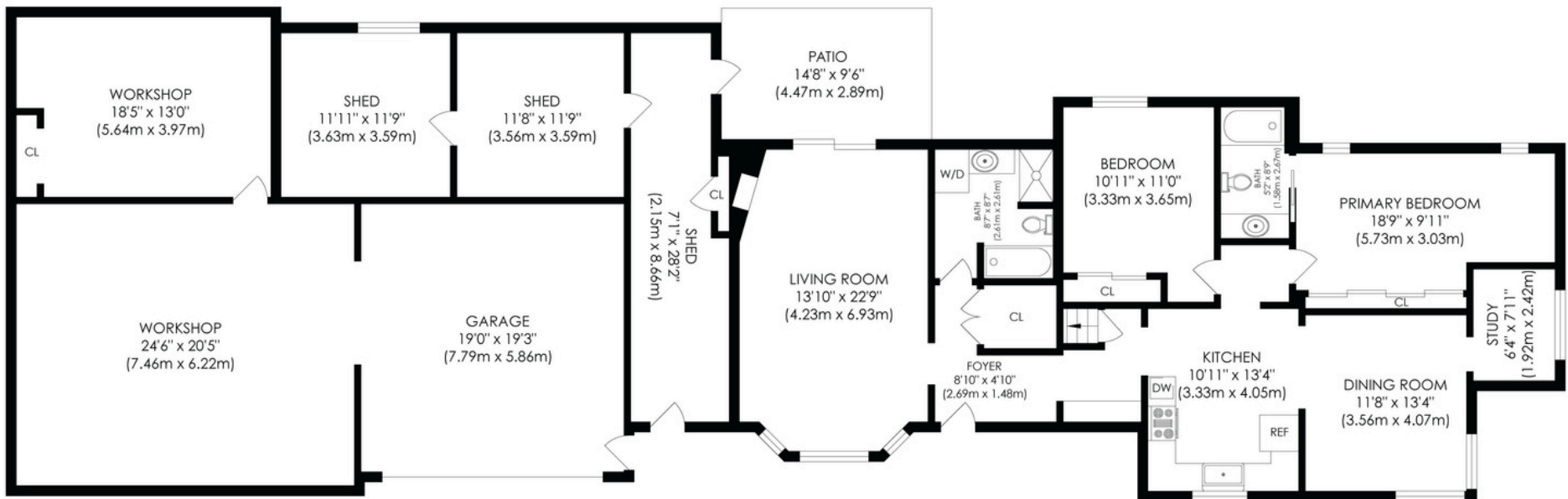




DEANNA NOYCE
PERSONAL REAL ESTATE CORPORATION



SECOND LEVEL



MAIN LEVEL

FINISHED AREA 1,640 sq.ft.
UNFINISHED AREA 1,795 sq.ft.
TOTAL AREA 3,435 sq.ft.



APPROXIMATE SQUARE FOOTAGE
ALL DRAWINGS ARE FOR ILLUSTRATIVE PURPOSES ONLY

9 CAMDEN AVENUE, VICTORIA, BC