

101 - 1167 PIPELINE ROAD
COQUITLAM, BC

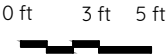
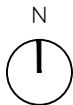
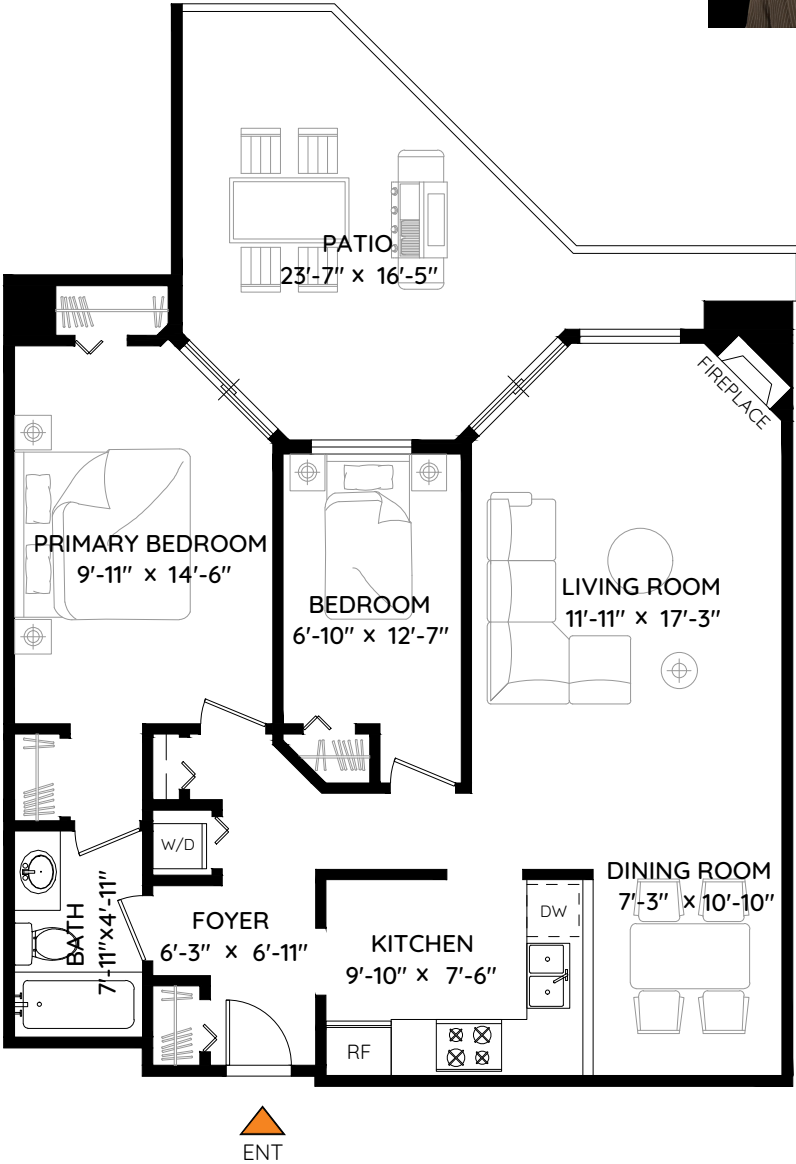


Darlene Lenfesty

604.619.8119
darlenelenfesty@remax.net
www.darlenelenfesty.com

RE/MAX all points realty
RE/MAX All Points Realty
#101 - 1020 Austin Ave. Coquitlam
2815 A St Johns St., Port Moody
604.936.0422 & 604.939.6890

LIVING AREA	838 SQ.FT.
PATIO	215 SQ.FT.
CEILING HEIGHT	7'-10"



The floor plan and measurements are approximate, typically within +/- 2%. These are intended strictly for advertising purposes. They may encompass unfinished areas and are not intended for architectural or construction applications. There may be variances in the numbers if there were restrictions on property access or if taking precise measurements at the time of measuring isn't feasible. E&O insured.