

11574/11570 203 Street,  
 Maple Ridge, B.C.

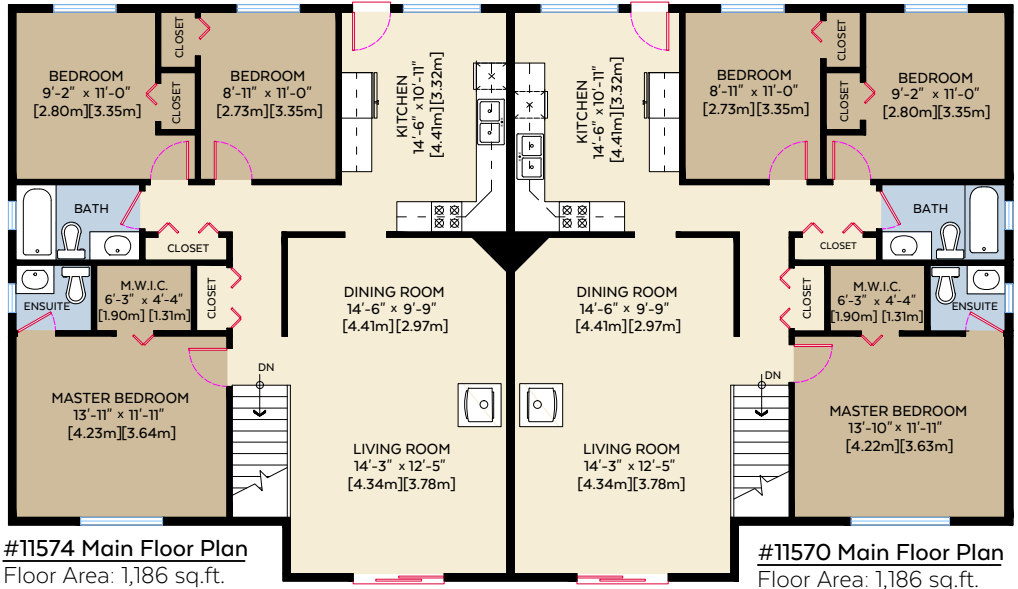
Main Floor 2,372 sq.ft. 220.36 sq.m.  
 Lower Floor: 2,637 sq.ft. 244.98 sq.m.  
**Total: 5,009 sq.ft. 465.35 sq.m.**

**Auxiliary Area**

Workshop: 577 sq.ft. 53.60 sq.m.

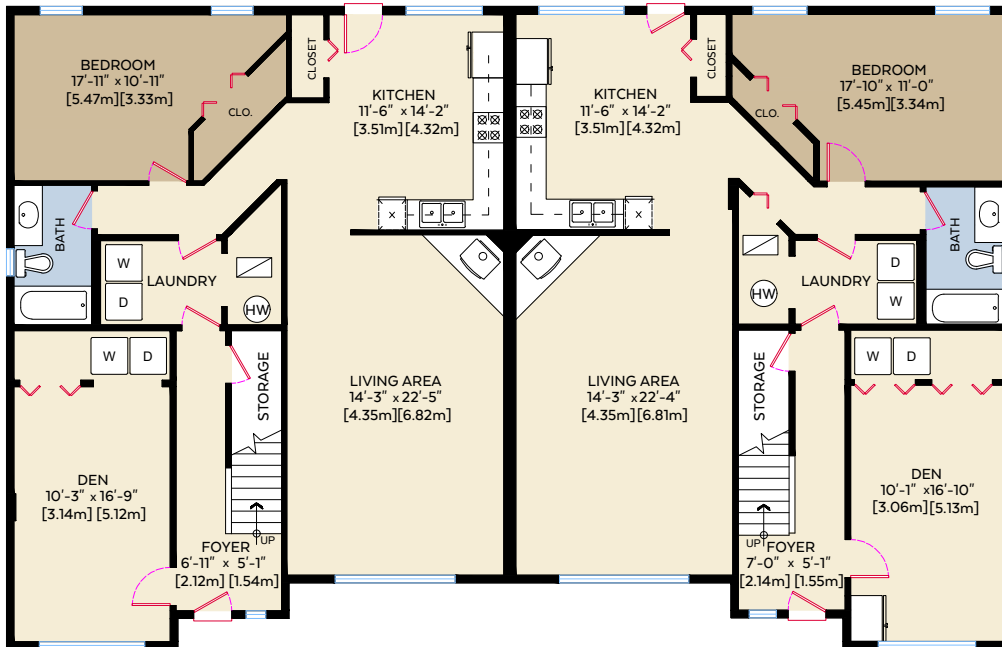
11574 203 Street,

Main Floor 1,186 sq.ft.  
 Lower Floor: 1,319 sq.ft.  
**Total: 2,505 sq.ft.**



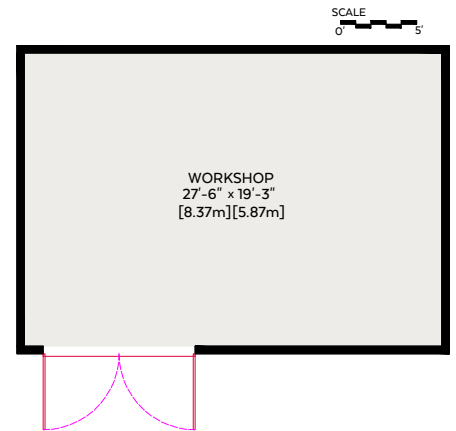
#11574 Main Floor Plan  
 Floor Area: 1,186 sq.ft.

#11570 Main Floor Plan  
 Floor Area: 1,186 sq.ft.



#11574 Lower Floor Plan  
 Floor Area: 1,319 sq.ft.

#11570 Lower Floor Plan  
 Floor Area: 1,318 sq.ft.



11570 203 Street,  
 Main Floor 1,186 sq.ft.  
 Lower Floor: 1,318 sq.ft.  
**Total: 2,504 sq.ft.**