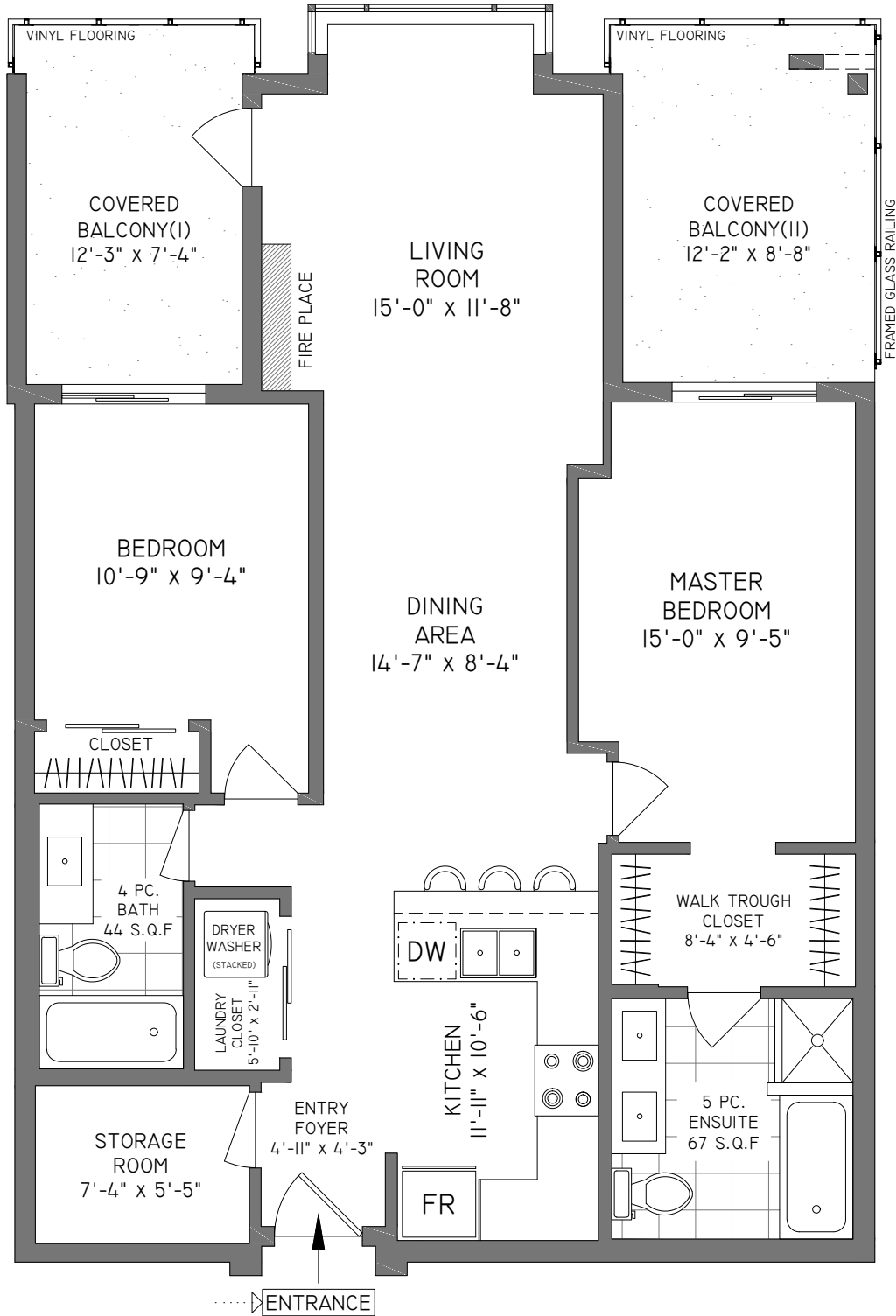


#301 - 2460 KELLY AVENUE
PORT COQUITLAM
1024 SQ. FT.

8'-0" - 9'-0" CEILING HEIGHTS



Booked on the Pixlink App™ **P**



FLOOR	AREA (SQ. FT.)	
	FINISHED	BALCONY
THIRD	1024	197



THE REPRESENTED FLOOR PLANS ARE NOT SUITABLE FOR CONSTRUCTION/ARCHITECTURAL PURPOSES. EVERY EFFORT HAS BEEN MADE TO REPRESENT ALL DIMENSIONS ACCURATELY, E&O INSURED. FINAL SQUARE FOOTAGE MAY BE OBTAINED FROM STRATA PLAN.