

2253 Stafford Avenue, Port Coquitlam

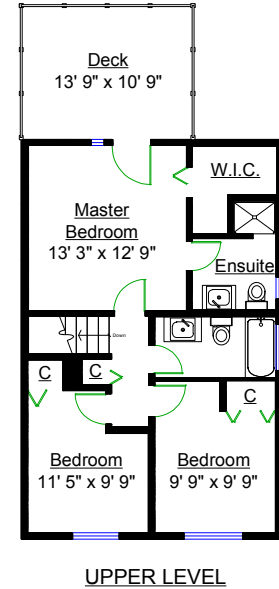
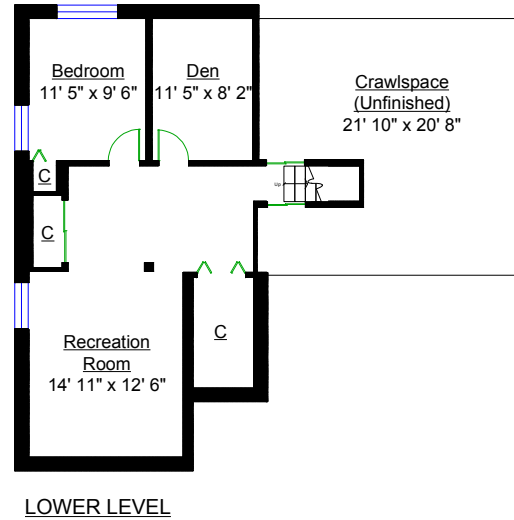
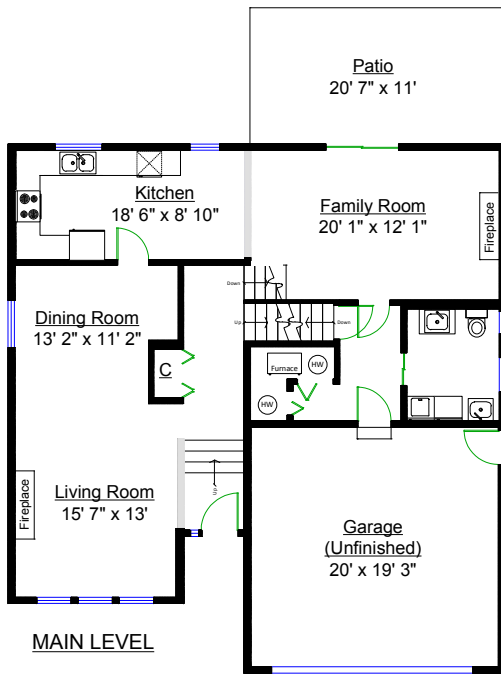


darleneLenfesty

604-619-8119

darlenelenfesty@remax.net

www.DarleneLenfesty.com



Totals**

| | |
|--------------|---------------|
| Main Level: | 1,156 sq. ft. |
| Upper Level: | 674 sq. ft. |
| Lower Level: | 741 sq. ft. |
| TOTAL(FIN.): | 2,571 sq. ft. |
| Crawl Space: | 418 sq. ft. |
| GRAND TOTAL: | 2,989 sq. ft. |

Other Areas

| | |
|---------|-------------|
| Patio: | 230 sq. ft. |
| Deck: | 148 sq. ft. |
| Garage: | 426 sq. ft. |
| TOTAL: | 804 sq. ft. |