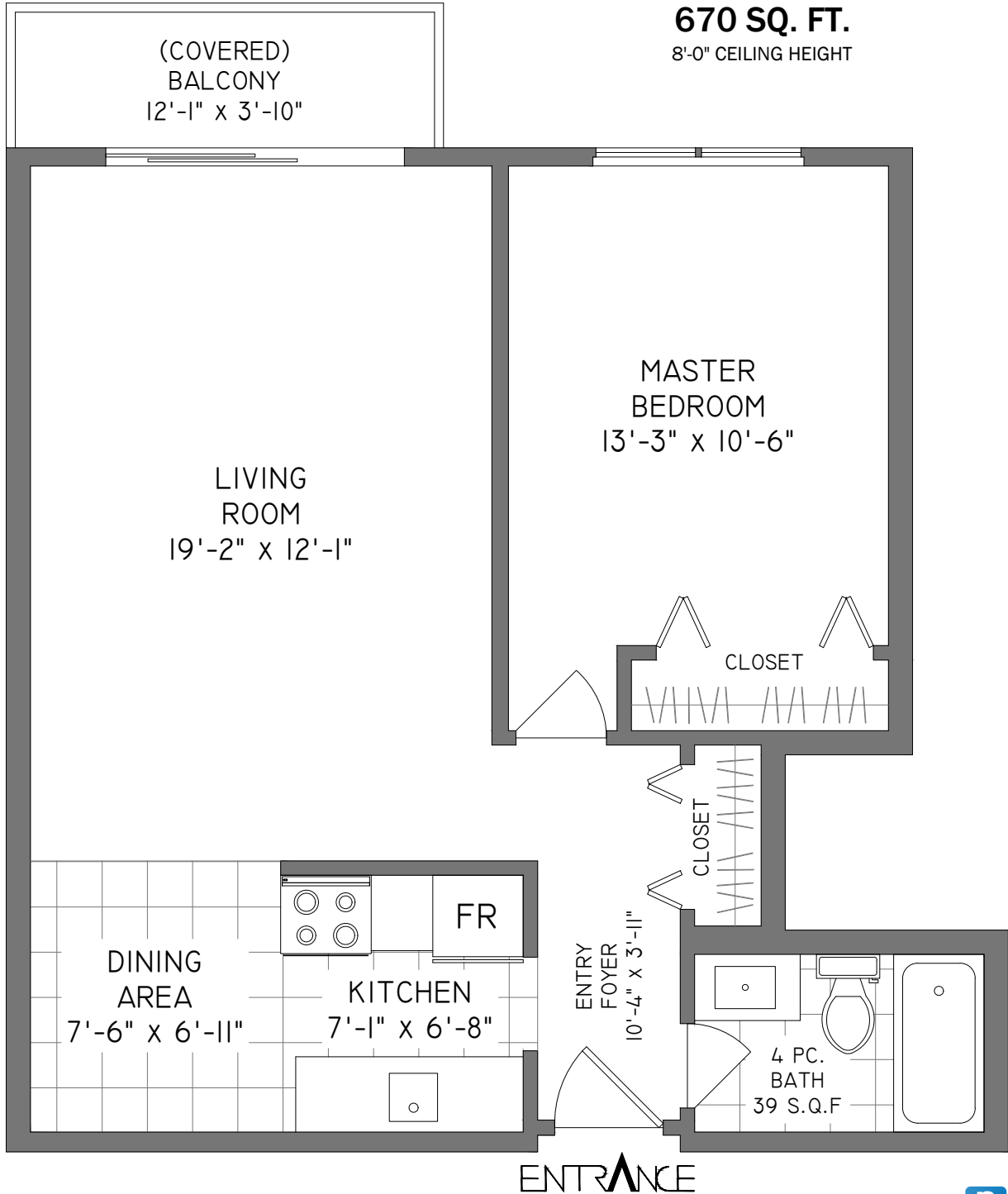




**#306 - 1345 CHESTERFIELD AVENUE
 NORTH VANCOUVER**

670 SQ. FT.
 8'-0" CEILING HEIGHT



ENTRANCE

Booked on
 the Pixilink App™



THE REPRESENTED FLOOR PLANS ARE NOT SUITABLE FOR CONSTRUCTION/ARCHITECTURAL PURPOSES.
 EVERY EFFORT HAS BEEN MADE TO REPRESENT ALL DIMENSION ACCURATELY, E&O INSURED.
 FINAL SQUARE FOOTAGE MAY BE OBTAINED FROM STRATA PLAN.



FLOOR	AREA (SQ. FT.)	
	FINISHED	BALCONY
THIRD	670	43