

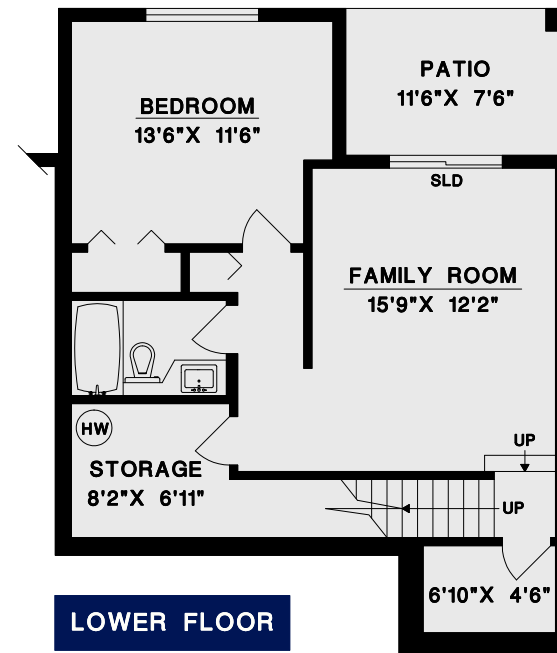
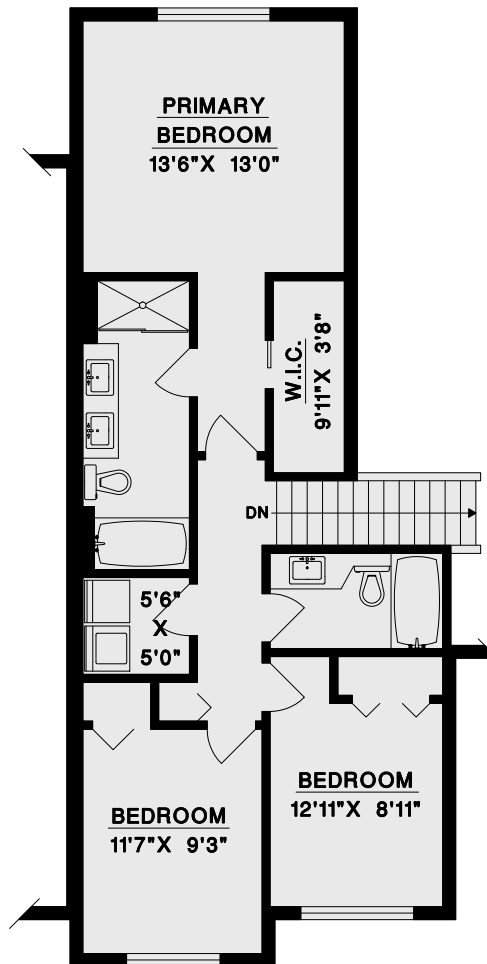
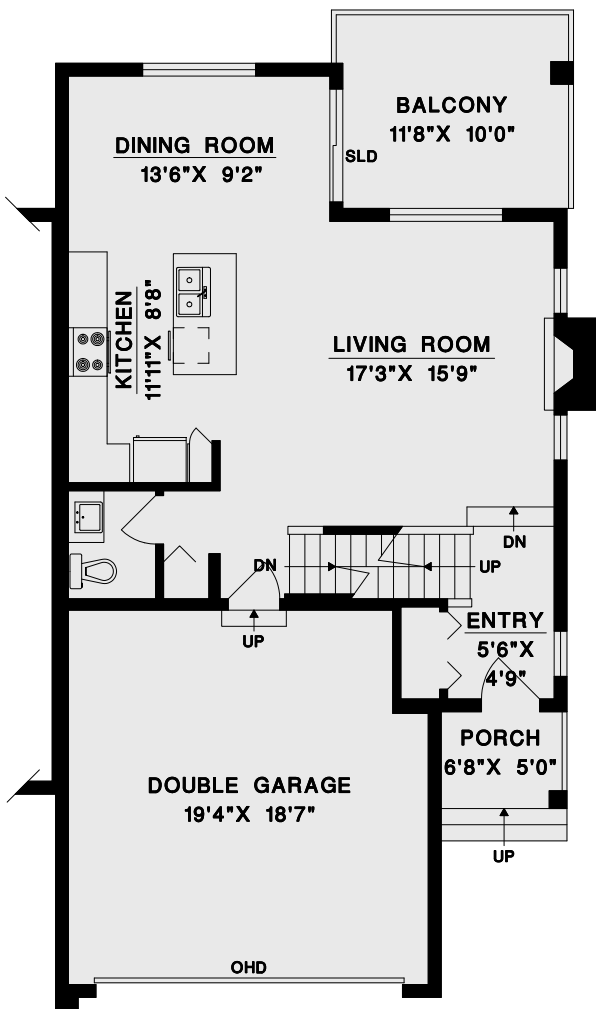


TREELAND REALTY

RAY BERNIER

CELL: 604-230-7262

**#33 - 21867 50TH AVENUE,
LANGLEY, B.C.**



UPPER FLOOR	811	SQ. FT.
MAIN FLOOR	677	SQ. FT.
LOWER FLOOR	661	SQ. FT.
FINISHED AREA	2149	SQ. FT.

GARAGE	368	SQ. FT.
BALCONY	124	SQ. FT.
PATIO	87	SQ. FT.
ENTRY	43	SQ. FT.

*Area measurements taken to center of all walls.



DRAWN BY: CN
DATE: OCTOBER 2023
REVISED:

