



Ray Bernier
604-230-7262

raybernier@telus.net
 raybernier.com

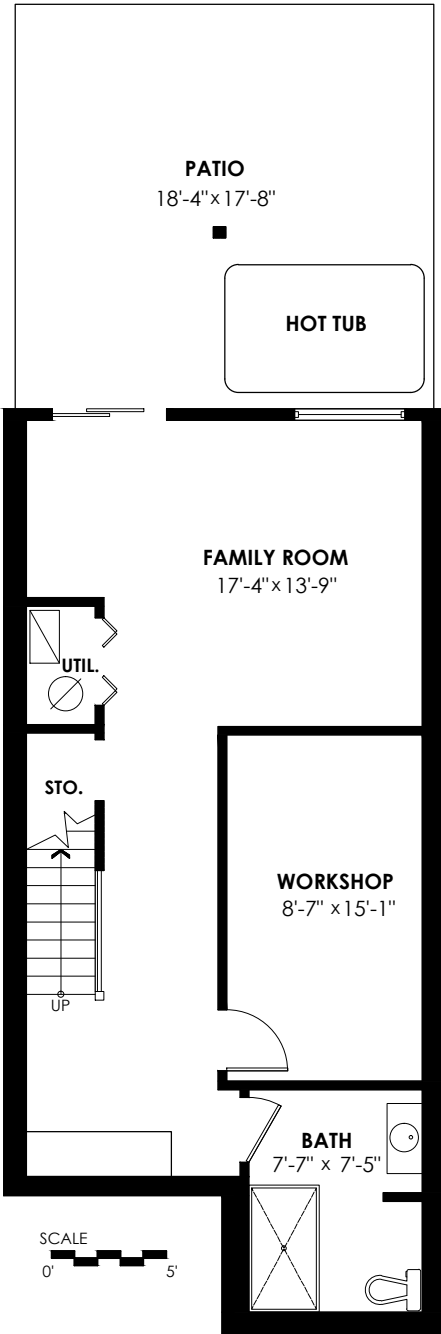
RE/MAX Treeland Realty

91-27272 32 Avenue, Aldergrove

Lower Floor:	685 sq. ft.	Sunroom:	94 sq. ft.
Main Floor:	685 sq. ft.	Patio:	359 sq. ft.
Upper Floor:	659 sq. ft.	Carport:	269 sq. ft.
Total Livable:	2,029 sq. ft.	Porch:	76 sq. ft.
		Hot Tub:	48 sq. ft.
		Total Extras:	846 sq. ft.

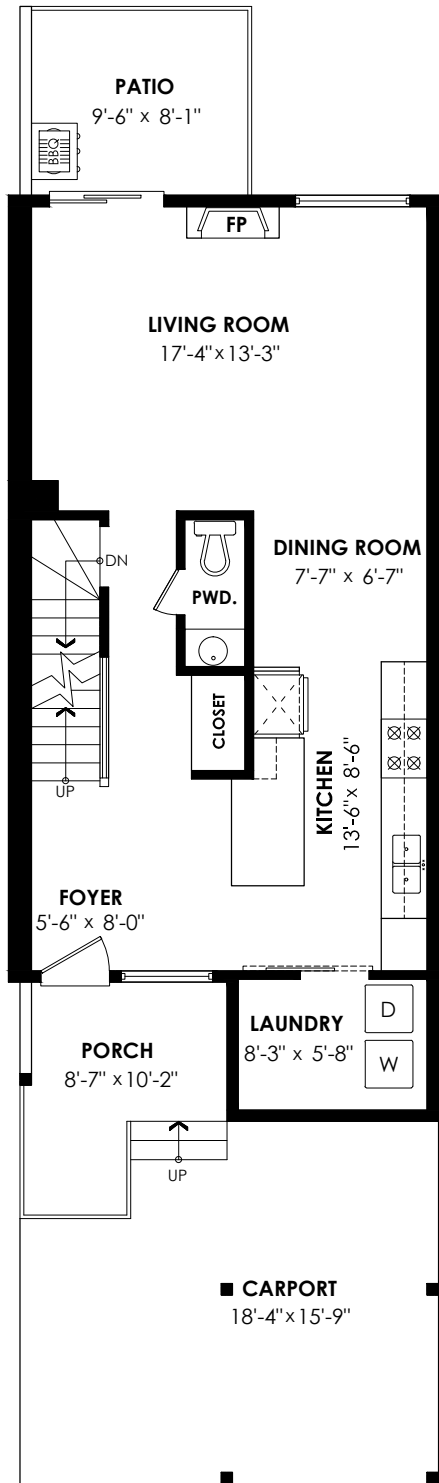
Lower Floor Plan

Floor Area 685 sq.ft.
 Ceiling Height: 7'-8"



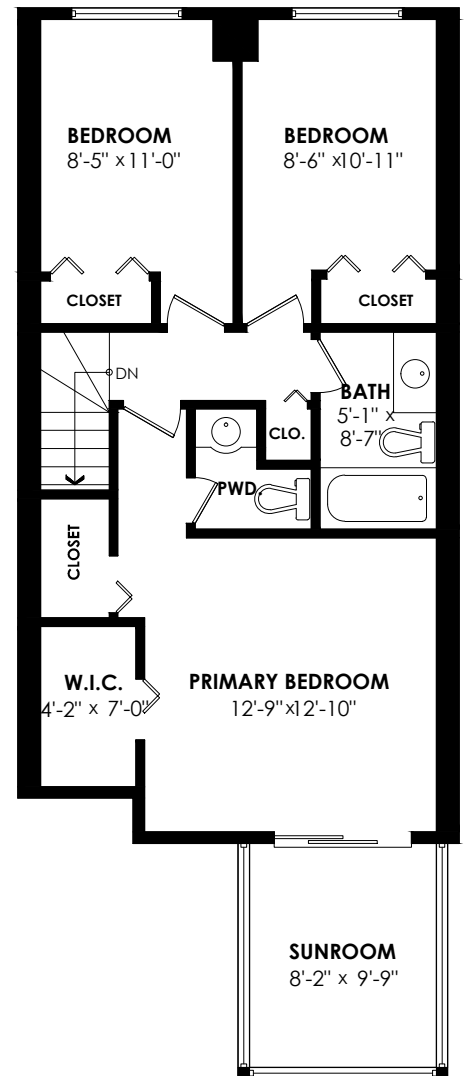
Main Floor Plan

Floor Area: 685 sq.ft.
 Ceiling Height: 8'



Upper Floor Plan

Floor Area: 659 sq.ft.
 Ceiling Height: 7'-11"

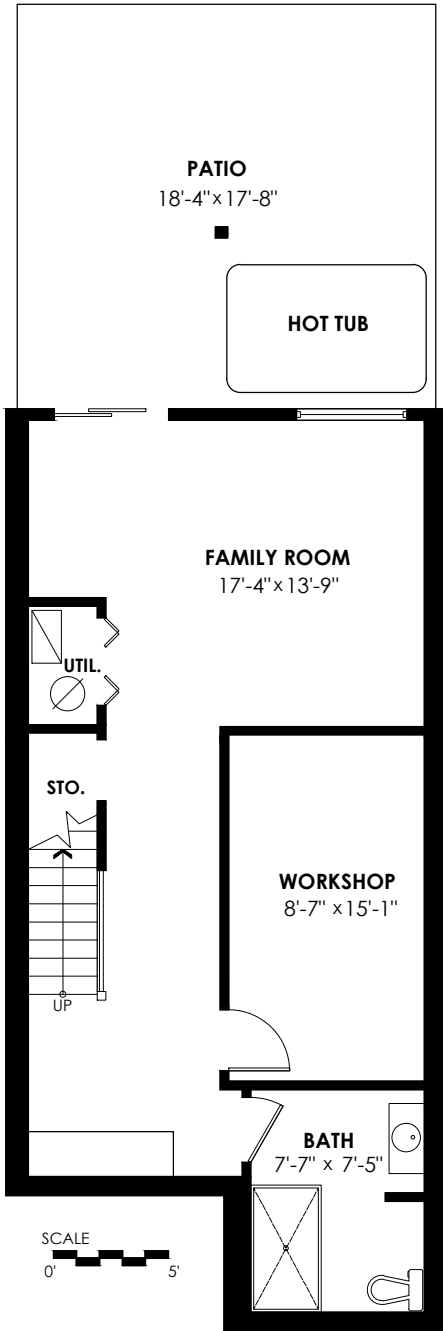


91-27272 32 Avenue, Aldergrove

Lower Floor:	685sq. ft.	Sunroom:	94 sq. ft.
Main Floor:	685sq. ft.	Patio:	359 sq. ft.
Upper Floor:	659sq. ft.	Carport:	269 sq. ft.
		Porch:	76 sq. ft.
		Hot Tub:	48 sq. ft.
Total Livable: 2,029 sq. ft.		Total Extras: 846 sq. ft.	

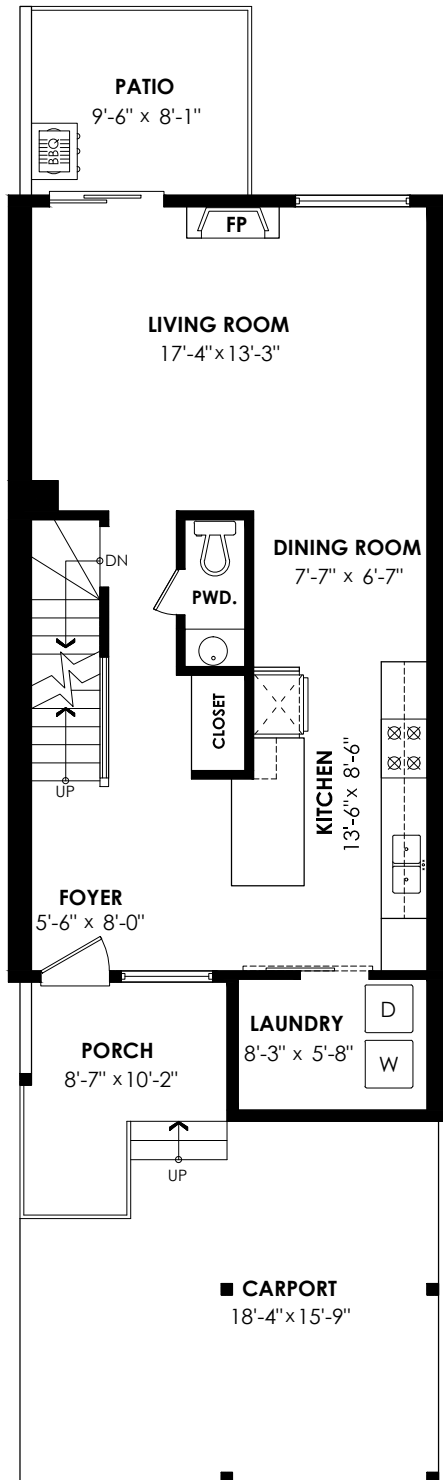
Lower Floor Plan

Floor Area 685 sq.ft.
Ceiling Height: 7'-8"



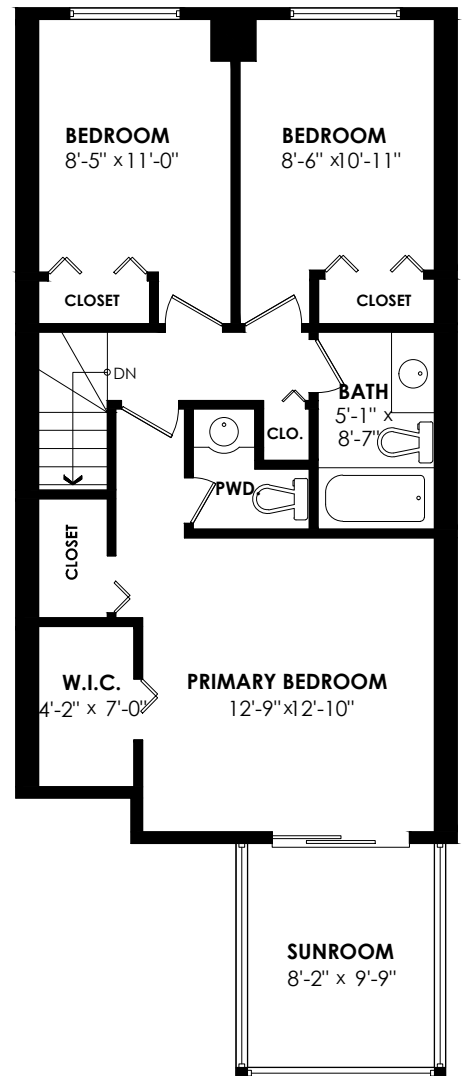
Main Floor Plan

Floor Area: 685 sq.ft.
Ceiling Height: 8'



Upper Floor Plan

Floor Area: 659 sq.ft.
Ceiling Height: 7'-11"



How Your Square Footage is Calculated

FOR ALL RESIDENTIAL HOMES

Any space that is not suitable for year-round use or has a ceiling height of less than 4 feet will not be included in the "TOTAL LIVABLE" square footage. This includes decks, garages or attics, and any space that does not have insulation or a source of heat. An area that is open to the floor below is not considered living space either. Areas occupied by stair treads are included in the "TOTAL LIVABLE" square footage.

FOR CONDOMINIUMS / APARTMENTS

Total square footage is calculated to the middle of shared or adjoining walls and the outside of non shared, exterior walls or common area walls. Since shared wall thickness is unknown, we assume a 12" fire wall and assign 6" for any wall that cannot be identified as exterior or hallway.

FOR DETACHED HOMES / TOWNHOMES

Total square footage is calculated to the outside of exterior walls.

FOR COMMERCIAL AND INDUSTRIAL

Square footage is based on interior measurements, not taken from original blueprints. Demising walls assumed to be 8.5". SQFT to BOMA Standard for retail ANSI/BOMA Z 65.5.5-2010: SQFT taken to center of demising walls and to exterior line of exterior walls (to the glass line of walls with 50% or more glass). Door setbacks included in SQFT. No common area or gross up (if any) accounted for in calculations.