



Gord Allan

604.916.8380
info@gordallan.com

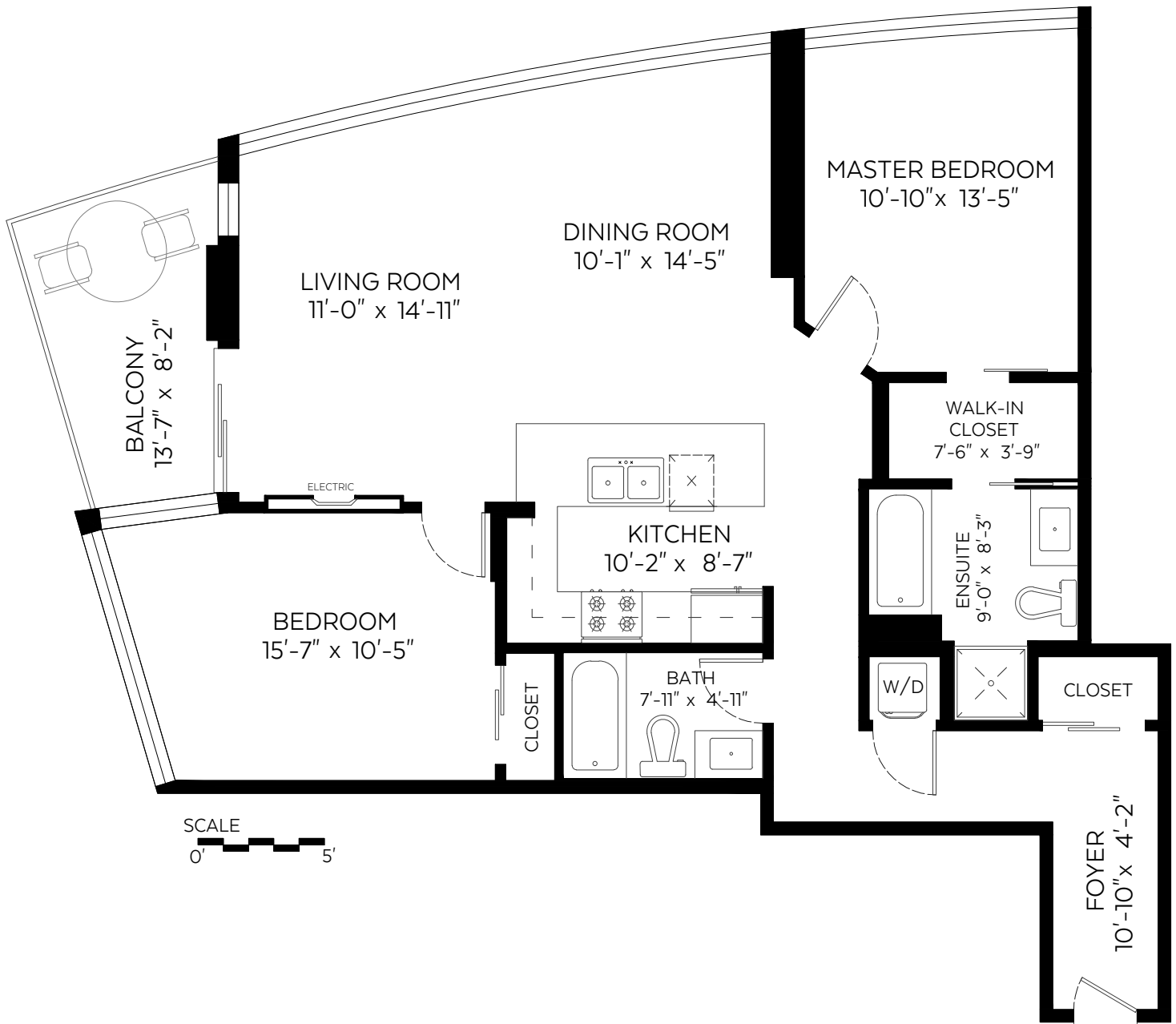
Skyhigh Results
www.gordallan.com

#2204-400 Capilano Road,
Port Moody, B.C.

Main Floor: 1,122 sq.ft.
Ceiling Height: 8'-8"

Auxiliary Area

Balcony: 80 sq.ft.



Valid Until: December 25, 2022



The floor plan is not suitable for architectural/construction and is covered under E&O. © Excelsior Measuring Inc. 2022. All rights reserved for Excelsior Measuring Inc. Users shall not publish and distribute such material (in whole or in part) and/or incorporate it in other works in any form.



Booked on
the Pixilink App™

