



Gord Allan

604.916.8380
info@gordallan.com

Skyhigh Results
www.gordallan.com

#54-2000 Panorama Drive,
Port Moody, B.C.

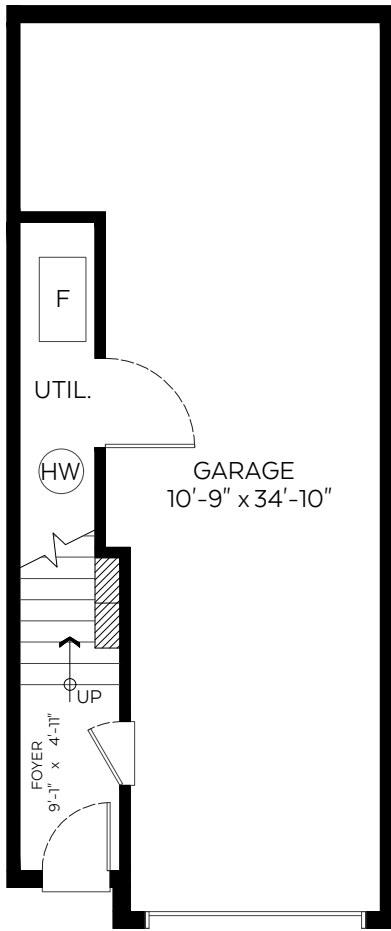
Entry Floor:	115 sq.ft.
Main Floor:	562 sq.ft.
Upper Floor:	579 sq.ft.

Total: 1,256 sq.ft.

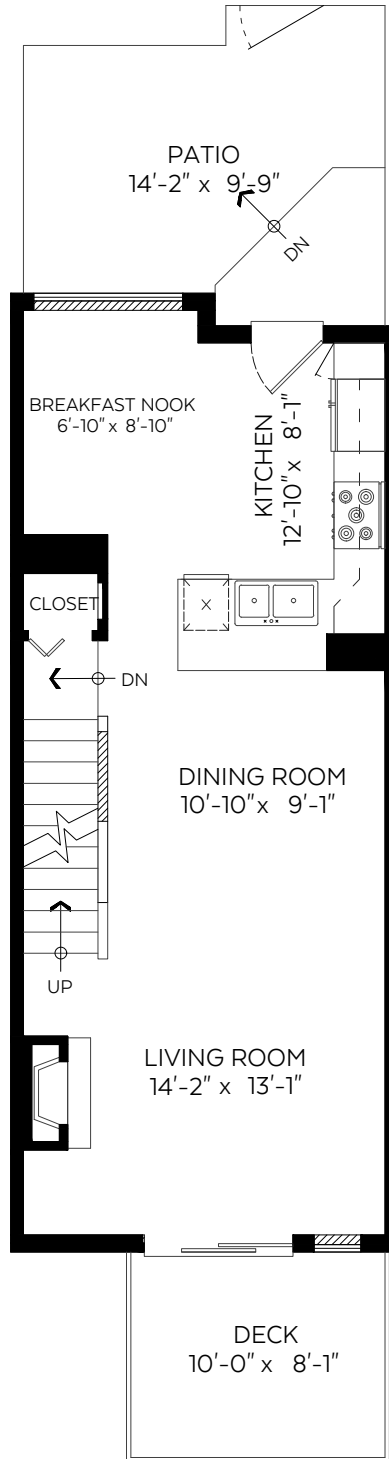
Auxiliary Area

Garage:	426 sq.ft.
Patio:	156 sq.ft.
Deck:	80 sq.ft.

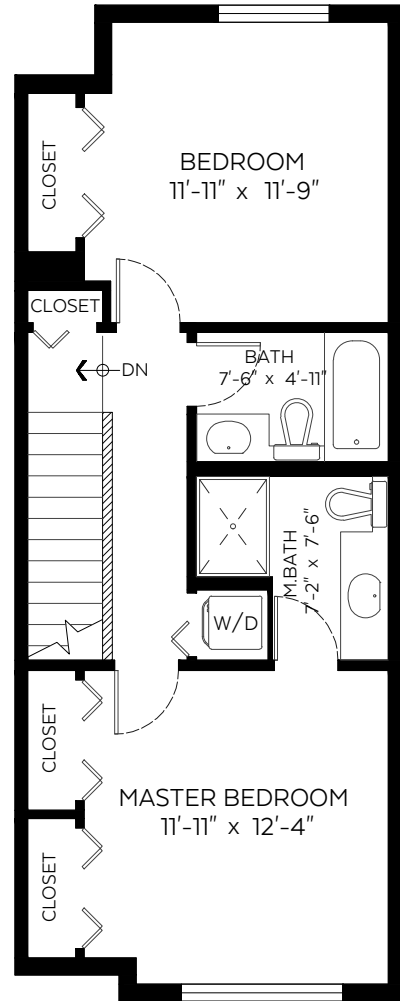
SCALE
0' 5'



Entry Floor Plan
Floor Area: 115 sq.ft.



Main Floor Plan
Floor Area: 562 sq.ft.



Upper Floor Plan
Floor Area: 579 sq.ft.



Measured on: November 06, 2019

The floor plan is not suitable for architectural/construction and is covered under E&O. © Excelsior Measuring Inc. 2019. All rights reserved for Excelsior Measuring Inc. Users shall not publish and distribute such material (in whole or in part) and/or incorporate it in other works in any form.



Booked on
the Pixilink App™

