



Gord Allan

604.916.8380
info@gordallan.com

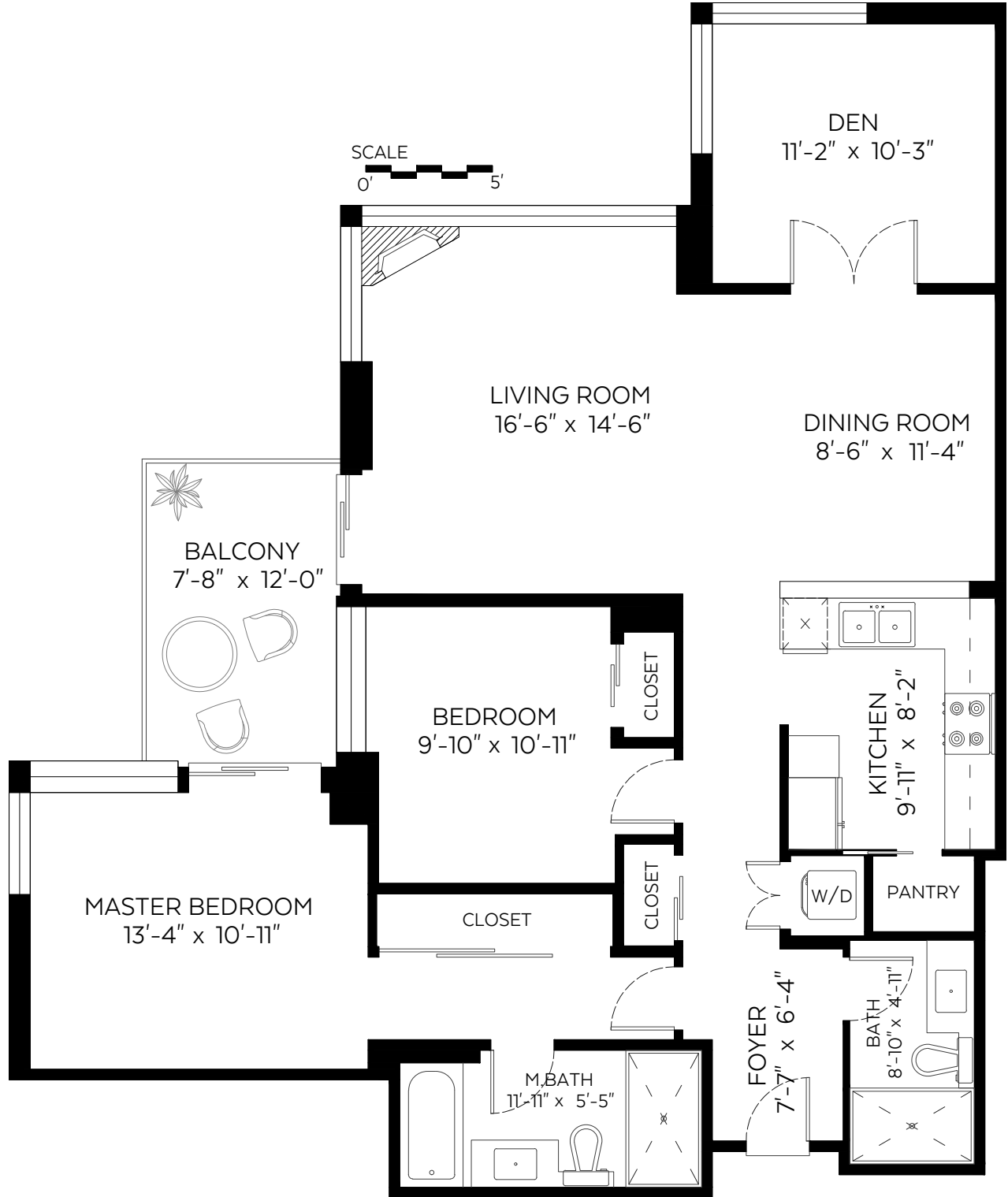
Skyhigh Results
www.gordallan.com

#1705-295 Guildford Way,
Port Moody, B.C.

Main Floor: 1,257 sq.ft.

Auxiliary Area

Balcony: 91 sq.ft.



Valid Until: May 07, 2022



The floor plan is not suitable for architectural/construction and is covered under E&O. © Excelsior Measuring Inc. 2019. All rights reserved for Excelsior Measuring Inc. Users shall not publish and distribute such material (in whole or in part) and/or incorporate it in other works in any form.



NORTH



Booked on
the Pixilink App™

